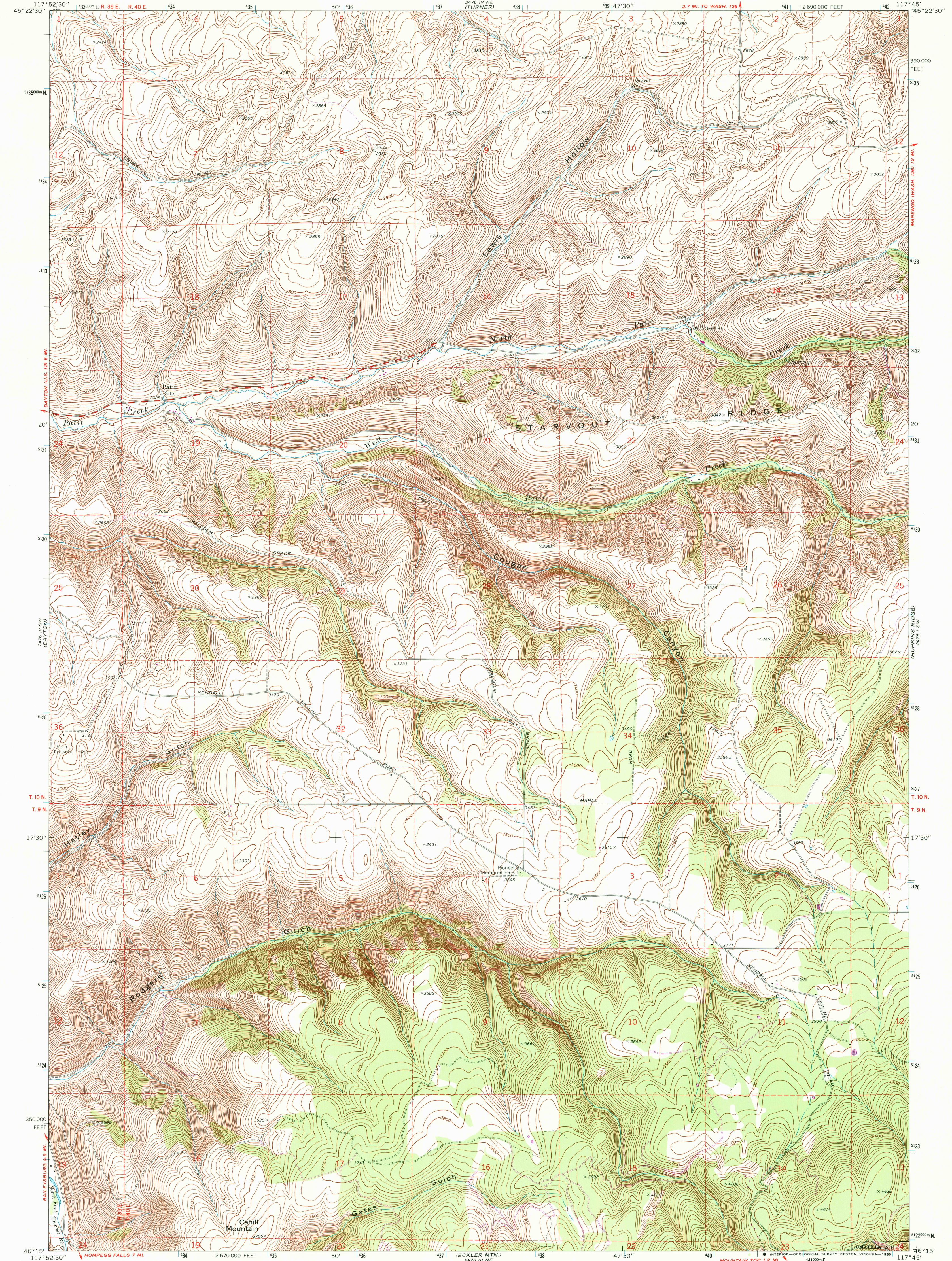


2476 IV NW
(CUMWALL)

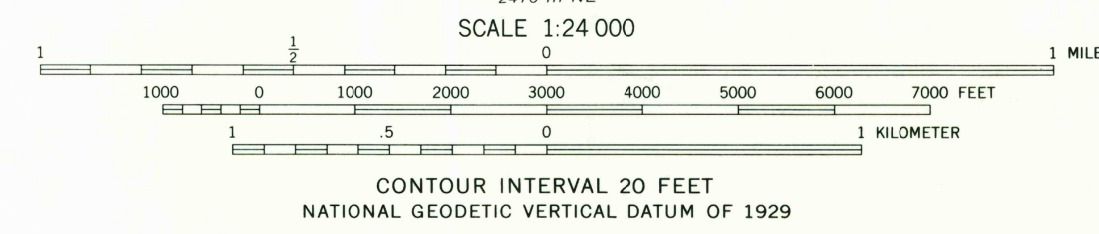
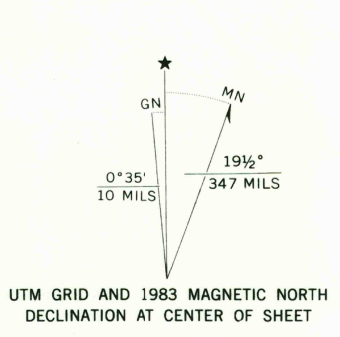
UNITED STATES
DEPARTMENT OF THE INTERIOR
GEOLOGICAL SURVEY

CAHILL MTN. QUADRANGLE
WASHINGTON—COLUMBIA CO.
7.5 MINUTE SERIES (TOPOGRAPHIC)

2476 IV NW
(CUMWALL)



Mapped, edited, and published by the Geological Survey
Control by USGS and NOS/NOAA
Topography by photogrammetric methods from aerial
photographs taken 1966. Field checked 1967
Polyconic projection: 1927 North American Datum
10,000-foot grid based on Washington coordinate system,
south zone
1000-meter Universal Transverse Mercator grid ticks,
zone 11, shown in blue
To place on the predicted North American Datum 1983
move the projection lines 17 meters north and
81 meters east as shown by dashed corner ticks
There may be private inholdings within the boundaries of
the National or State reservations shown on this map



ROAD CLASSIFICATION
Medium-duty ——— Light-duty ———
Unimproved dirt ———

CAHILL MTN., WASH.
46117-C7-TF-024

RETURN TO:
NHD HISTORICAL MAP ARCHIVES
USGS NATIONAL CENTER, MS-522
RESTON, VA 22092

THIS MAP COMPLIES WITH NATIONAL MAP ACCURACY STANDARDS
FOR SALE BY U. S. GEOLOGICAL SURVEY, DENVER, COLORADO 80225, OR RESTON, VIRGINIA 22092
A FOLDER DESCRIBING TOPOGRAPHIC MAPS AND SYMBOLS IS AVAILABLE ON REQUEST

Revisions shown in purple and woodland compiled from
aerial photographs taken 1981 and other source data
Partial field check by U. S. Forest Service. Map edited 1983

1967
PHOTOREVISED 1983
DMA 2476 IV SE—SERIES V891