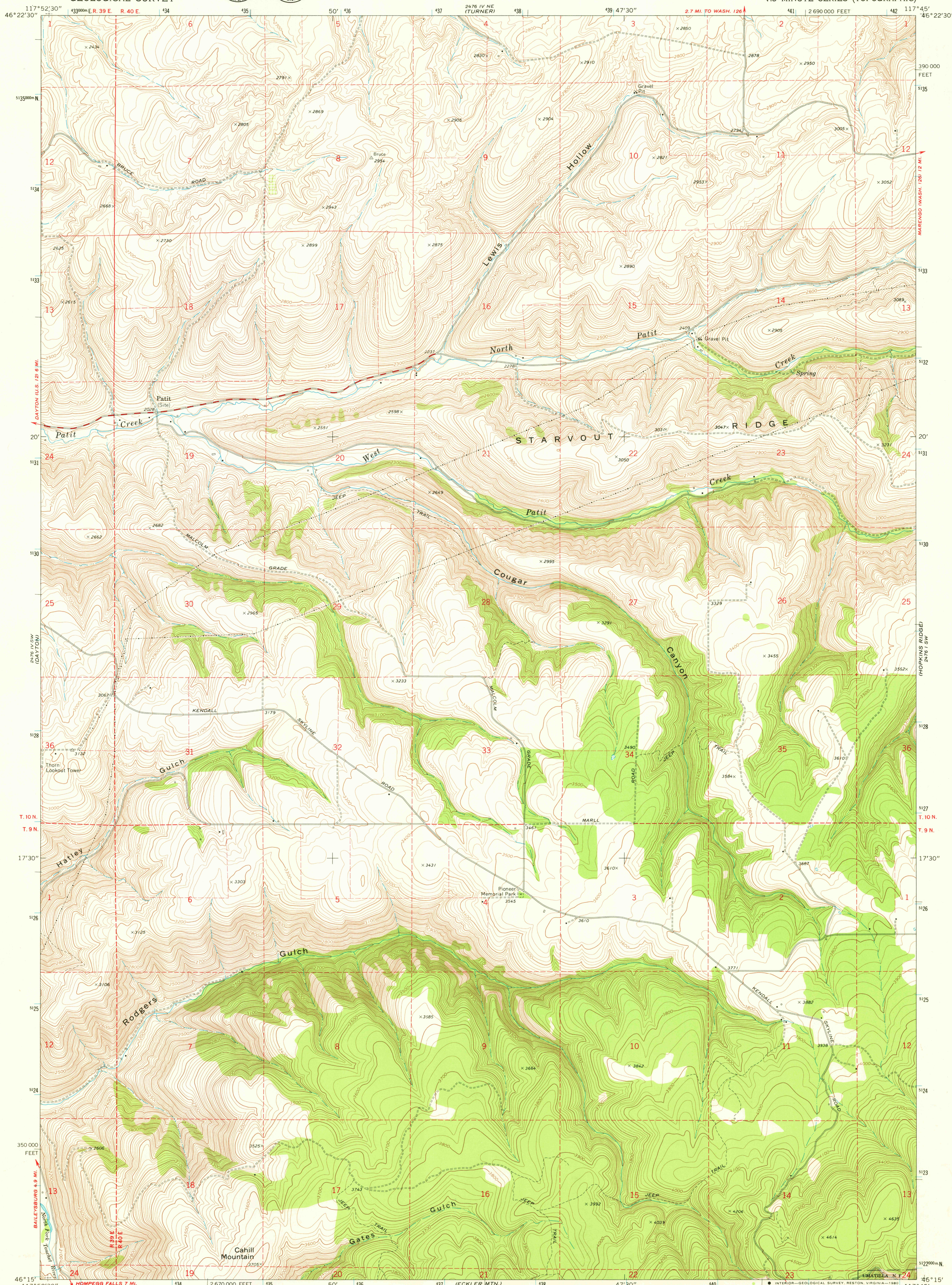


UNITED STATES
DEPARTMENT OF THE INTERIOR
GEOLOGICAL SURVEY



CAHILL MTN. QUADRANGLE
WASHINGTON—COLUMBIA CO.
7.5 MINUTE SERIES (TOPOGRAPHIC)



Mapped, edited, and published by the Geological Survey
Control by USGS and USC&GS

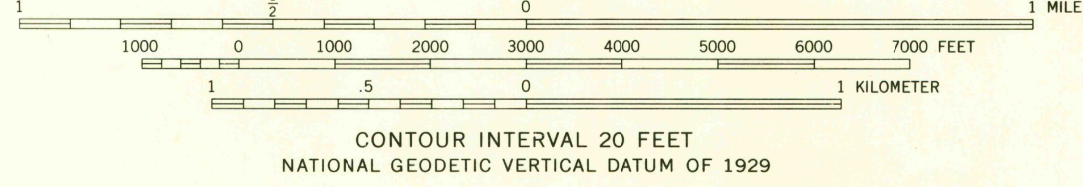
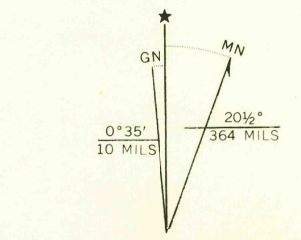
Topography by photogrammetric methods from aerial
photographs taken 1966. Field checked 1967

Polyconic projection. 1927 North American datum
10,000-foot grid based on Washington coordinate system,
south zone

1000-meter Universal Transverse Mercator grid ticks,
zone 11, shown in blue

To place on the predicted North American Datum 1983,
move the projection lines 17 meters north and
81 meters east as shown by dashed corner ticks

There may be private inholdings within the boundaries of
the National or State reservations shown on this map



ROAD CLASSIFICATION
Medium-duty ——— Light-duty ———
Unimproved dirt ———

USGS
Historical File
Topographic Division

CAHILL MTN., WASH.
N4615—W11745/7.5

1967
PHOTOINSPECTED 1976
DMA 2476 IV SE—SERIES V891

THIS MAP COMPLIES WITH NATIONAL MAP ACCURACY STANDARDS
FOR SALE BY U. S. GEOLOGICAL SURVEY, DENVER, COLORADO 80225, OR RESTON, VIRGINIA 22092
A FOLDER DESCRIBING TOPOGRAPHIC MAPS AND SYMBOLS IS AVAILABLE ON REQUEST

Map photoinspected 1976
No major culture or drainage changes observed

MAY - 9 1980