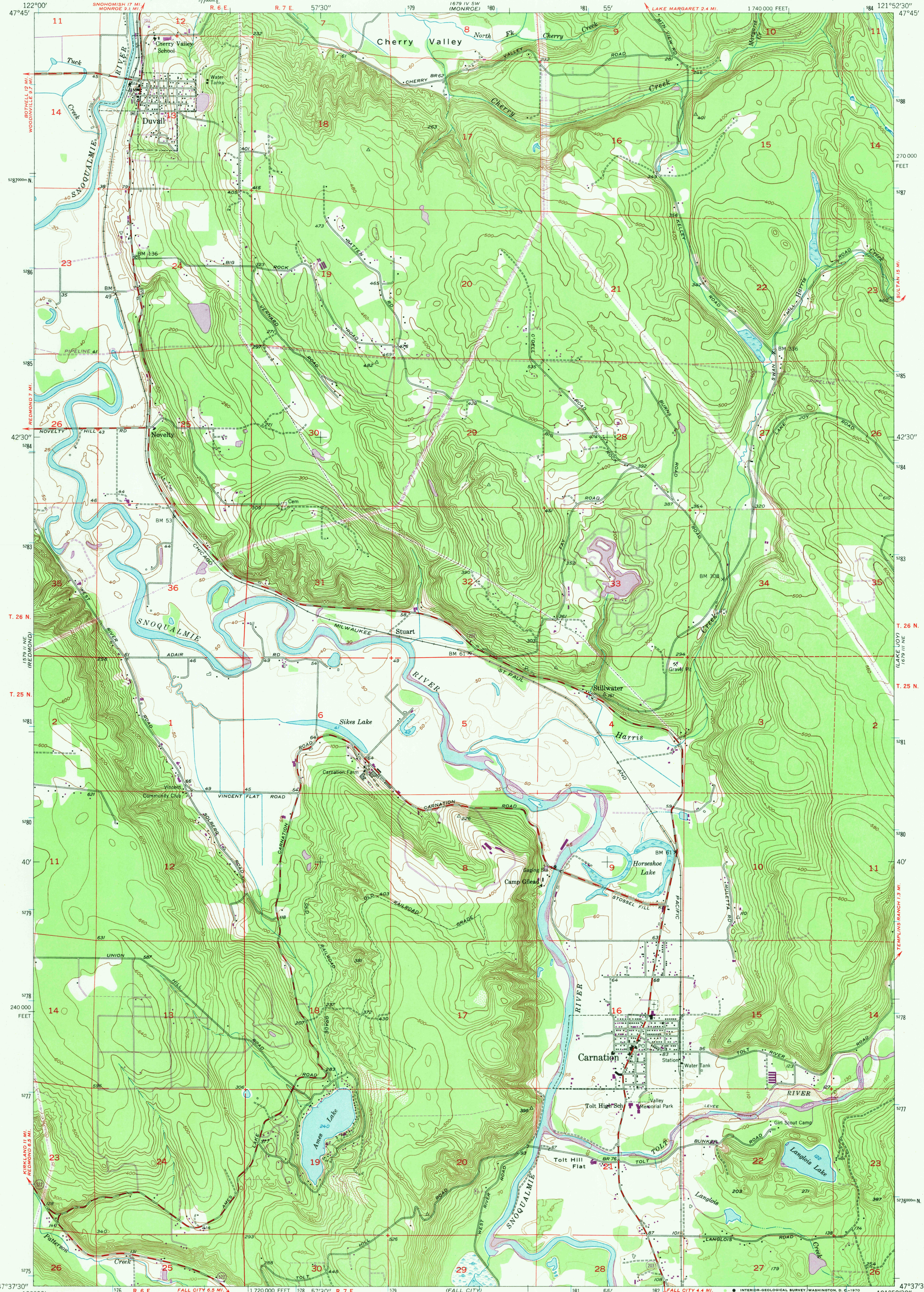


122°00' 47°45'

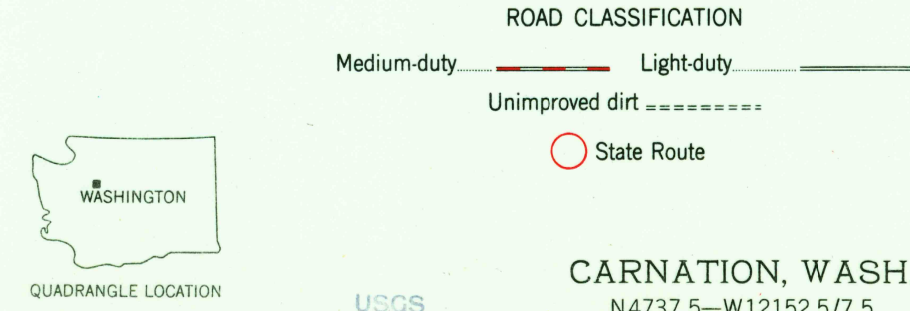
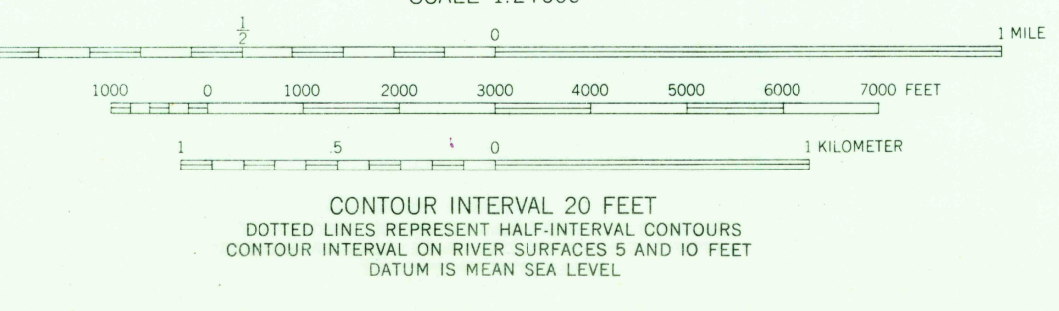
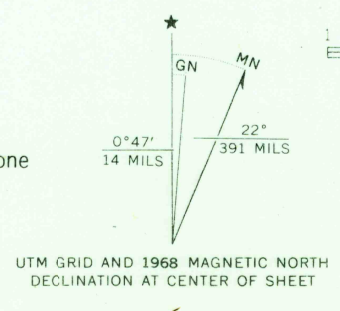
UNITED STATES
DEPARTMENT OF THE INTERIOR
GEOLOGICAL SURVEY

CARNATION QUADRANGLE
WASHINGTON-KING CO.
7.5 MINUTE SERIES (TOPOGRAPHIC)

121°52'30" 47°45'



Maped, edited, and published by the Geological Survey
Control by USGS and USC&GS
Topography from aerial photographs by multiplex methods
Aerial photographs taken 1952. Field check 1953
Polyconic projection. 1927 North American datum
10,000-foot grid based on Washington coordinate system, north zone
1000-meter Universal Transverse Mercator grid ticks,
zone 10, shown in blue
Dashed land lines indicate approximate locations
Revisions shown in purple compiled from aerial photographs
taken 1968. This information not field checked



FOR SALE BY U.S. GEOLOGICAL SURVEY, DENVER, COLORADO 80225, OR WASHINGTON, D. C. 20242
A FOLDER DESCRIBING TOPOGRAPHIC MAPS AND SYMBOLS IS AVAILABLE ON REQUEST

USGS
Historical File
Topographic Division

CARNATION, WASH.
N4737.5-W12152.5/7.5
1953
AMS 1679 III NW-SERIES V891

U.S.G.S.
FILE COPY
TOPOGRAPHIC DIVISION

2590
JAN 12 1970