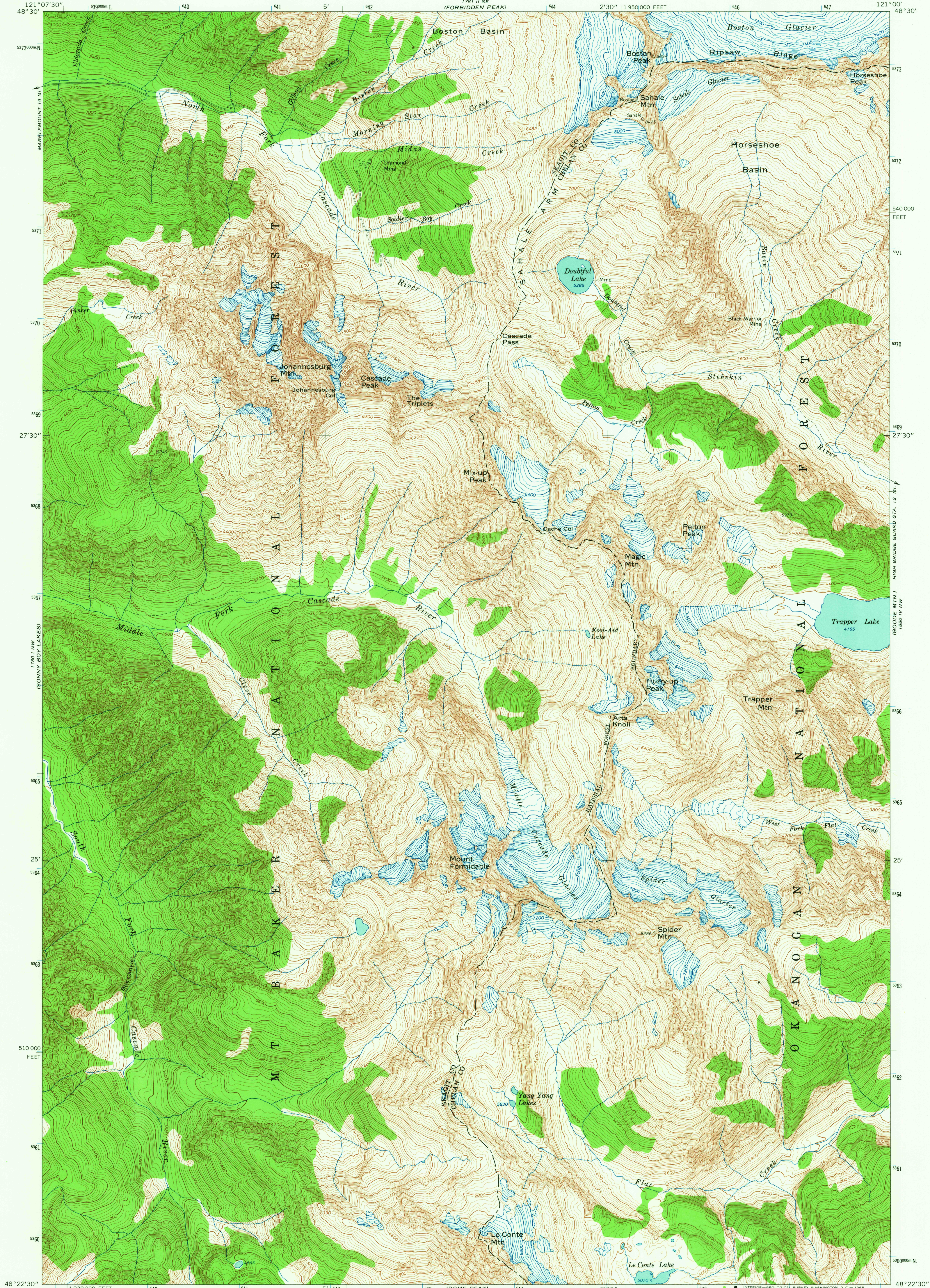
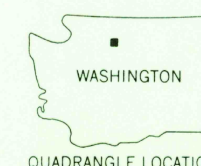
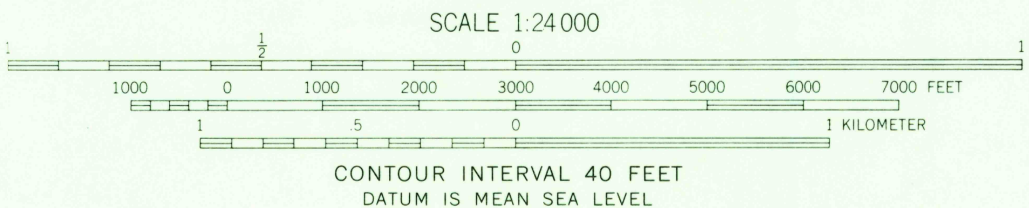
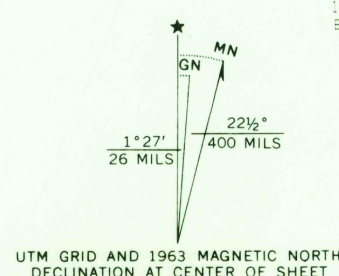


UNITED STATES  
DEPARTMENT OF THE INTERIOR  
GEOLOGICAL SURVEY

CASCADE PASS QUADRANGLE  
WASHINGTON  
7.5 MINUTE SERIES (TOPOGRAPHIC)



Mapped, edited, and published by the Geological Survey  
Control by USGS and USC&GS  
Topography by photogrammetric methods from aerial  
photographs taken 1958. Field checked 1963  
Polyconic projection. 1927 North American datum  
10,000-foot grid based on Washington coordinate system,  
north zone  
1000-meter Universal Transverse Mercator grid ticks,  
zone 10, shown in blue  
Where omitted, land lines have not been established



ROAD CLASSIFICATION  
Light duty ————— Unimproved dirt =

CASCADE PASS, WASH.  
N4822.5—W12100/7.5

1963  
AMS 1780 I NE—SERIES V891

U.S.G.S.  
FILE COPY  
TOPOGRAPHIC DIVISION

MAR 3 1965

2695