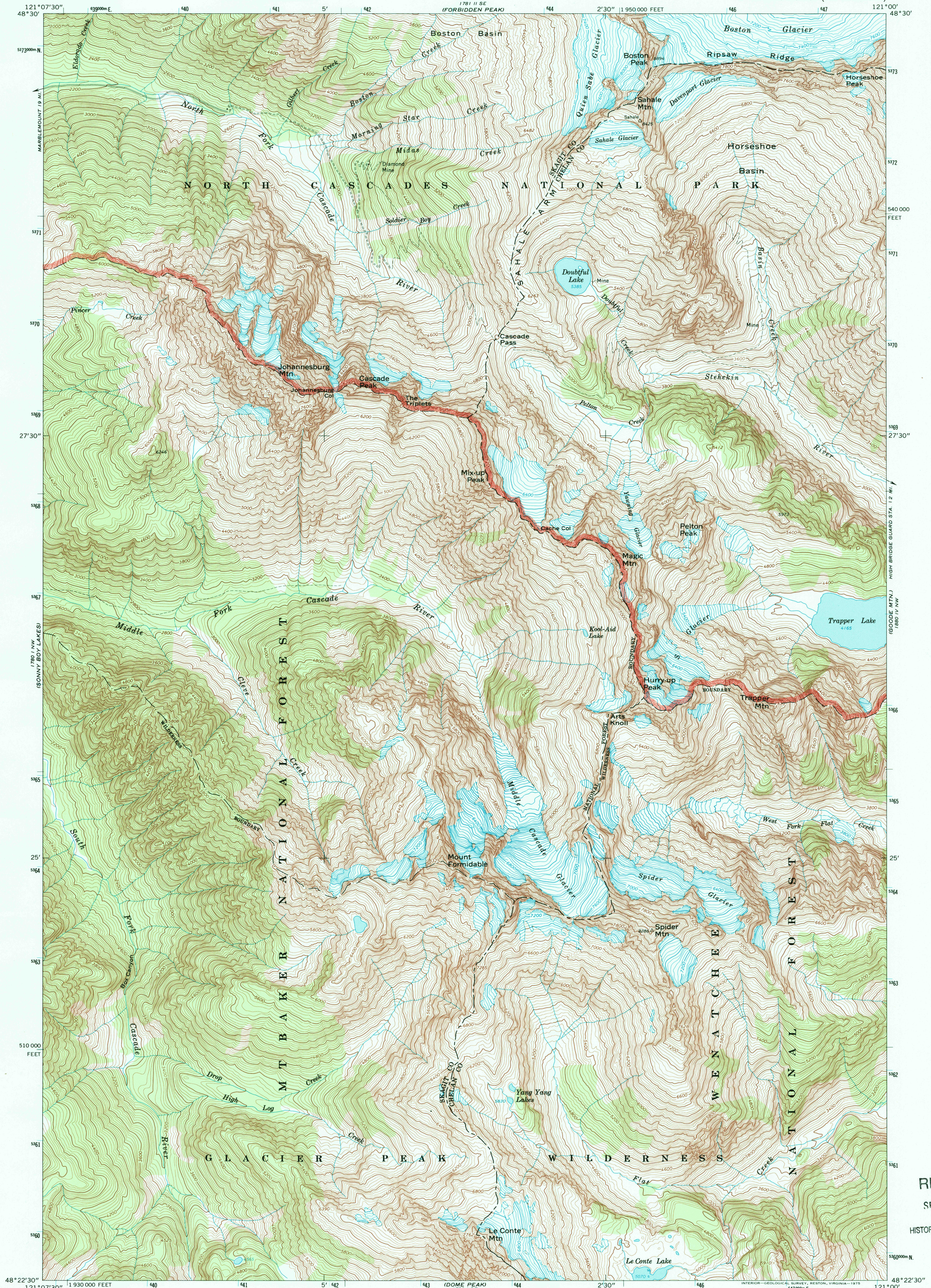


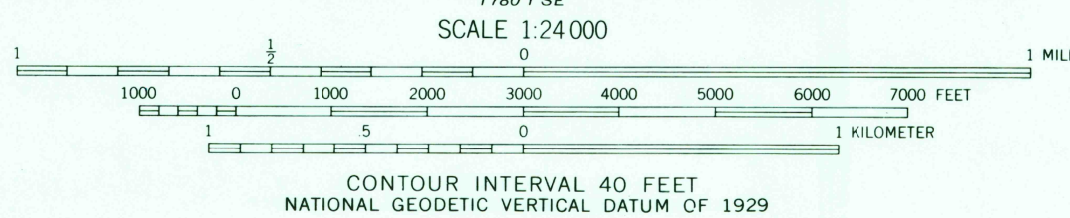
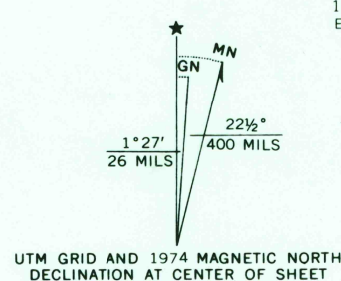


U.S. DEPARTMENT OF THE INTERIOR
U.S. GEOLOGICAL SURVEY

CASCADE PASS QUADRANGLE
WASHINGTON
7.5 MINUTE SERIES (TOPOGRAPHIC)



Mapped, edited, and published by the Geological Survey
Control by USGS and NOS/NOAA
Topography by photogrammetric methods from aerial
photographs taken 1958. Field checked 1963
Polyconic projection. 1927 North American datum
10,000-foot grid based on Washington coordinate system,
north zone. 1000-meter Universal Transverse Mercator grid ticks,
zone 10, shown in blue
Where omitted, land lines have not been established



ROAD CLASSIFICATION
Light-duty ————— Unimproved dirt - - - - -

CASCADE PASS, WASH.
N4822.5—W12100.7.5

1963
MINOR CORRECTIONS MADE 1974
AMS 1780 I NE—SERIES V891

RECEIVED
SEP 30 2001
U.S. GEOLOGICAL SURVEY
HISTORICAL MAP ARCHIVES

