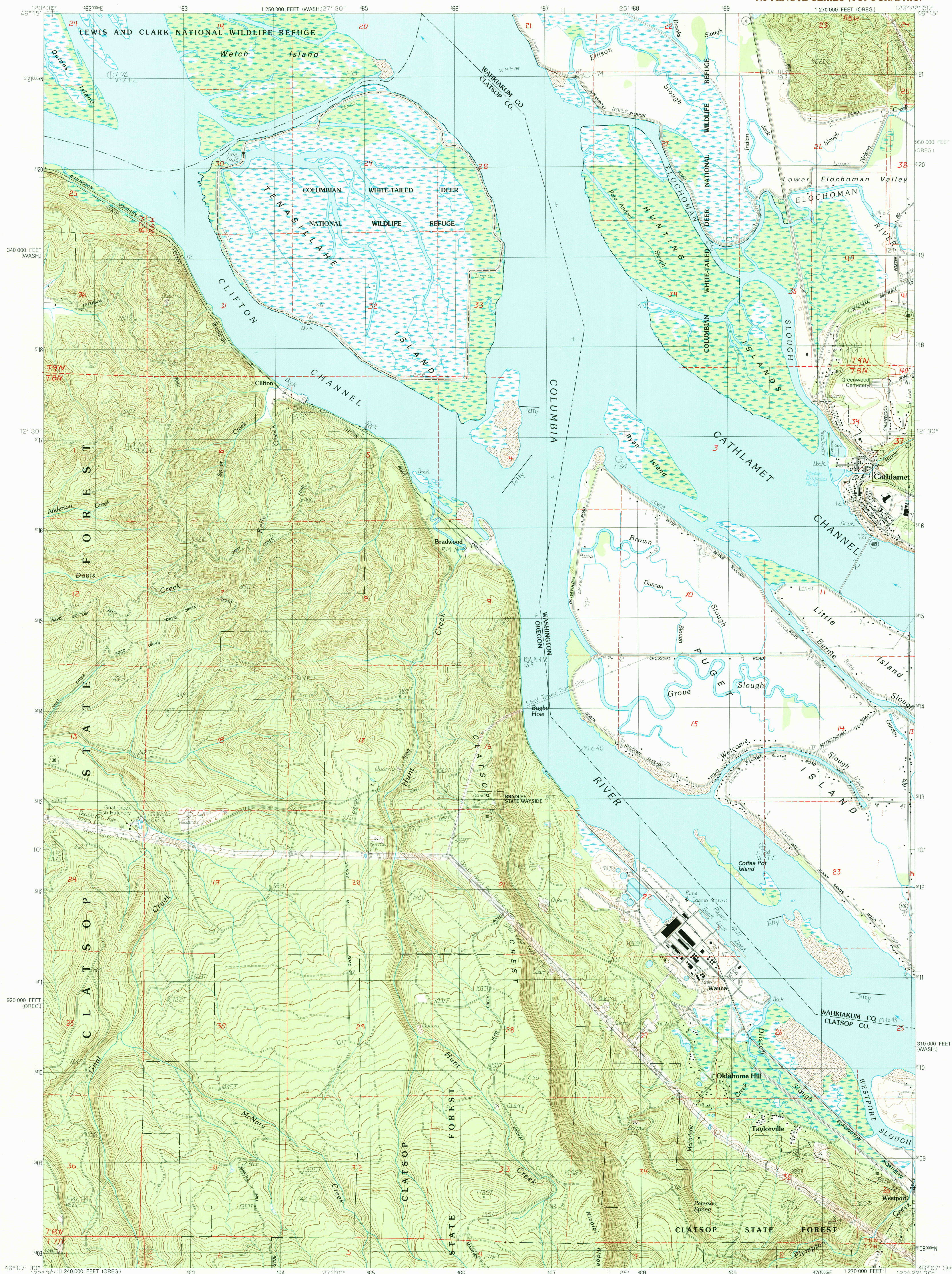


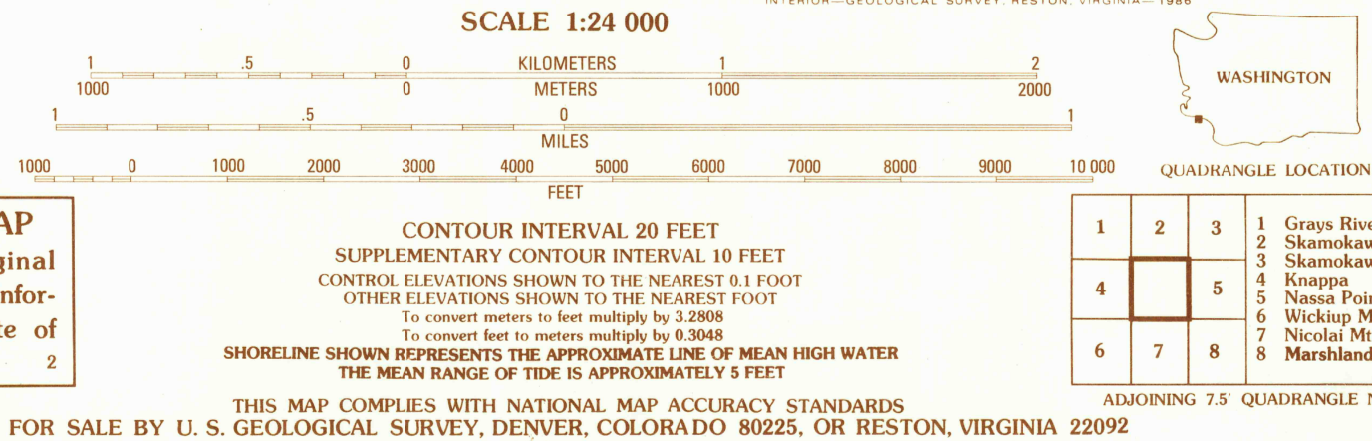
UNITED STATES  
DEPARTMENT OF THE INTERIOR  
GEOLOGICAL SURVEY

CATHLAMET QUADRANGLE  
WASHINGTON—OREGON  
7.5 MINUTE SERIES (TOPOGRAPHIC)



PRODUCED BY THE UNITED STATES GEOLOGICAL SURVEY  
CONTROL BY USGS, NOS/NOAA  
COMPILED FROM AERIAL PHOTOGRAPHS TAKEN ..... 1980  
FIELD CHECKED ..... 1981. MAP EDITED ..... 1985  
PROJECTION ..... LAMBERT CONFORMAL CONIC  
GRID: 1000-METER UNIVERSAL TRANSVERSE MERCATOR ..... ZONE 10  
10,000-FOOT STATE GRID TICKS, OREG., NORTH AND WASH. SOUTH ZONES  
UTM GRID DECLINATION ..... 0119° WEST  
1980 MAGNETIC NORTH DECLINATION ..... 0119° WEST  
VERTICAL DATUM ..... NATIONAL GEODETIC VERTICAL DATUM OF 1929  
HORIZONTAL DATUM ..... 1927 NORTH AMERICAN DATUM  
To place on the predicted North American Datum of 1983,  
move the projection lines as shown by dashed corner ticks  
(24 meters north / 96 meters east)  
There may be private inholdings within the boundaries of any  
Federal and State Reservations shown on this map

**PROVISIONAL MAP**  
Produced from original  
manuscript drawings. Infor-  
mation shown as of date of  
field check.



**ROAD LEGEND**  
Improved Road .....  
Unimproved Road .....  
Trail .....  
Interstate Route .....  
U.S. Route .....  
State Route .....

CATHLAMET, WASH.—OREG.  
PROVISIONAL EDITION 1985

U.S. GEOLOGICAL SURVEY  
MAR 0 1985  
REC'D FILE COPY

46123-B4-TF-024