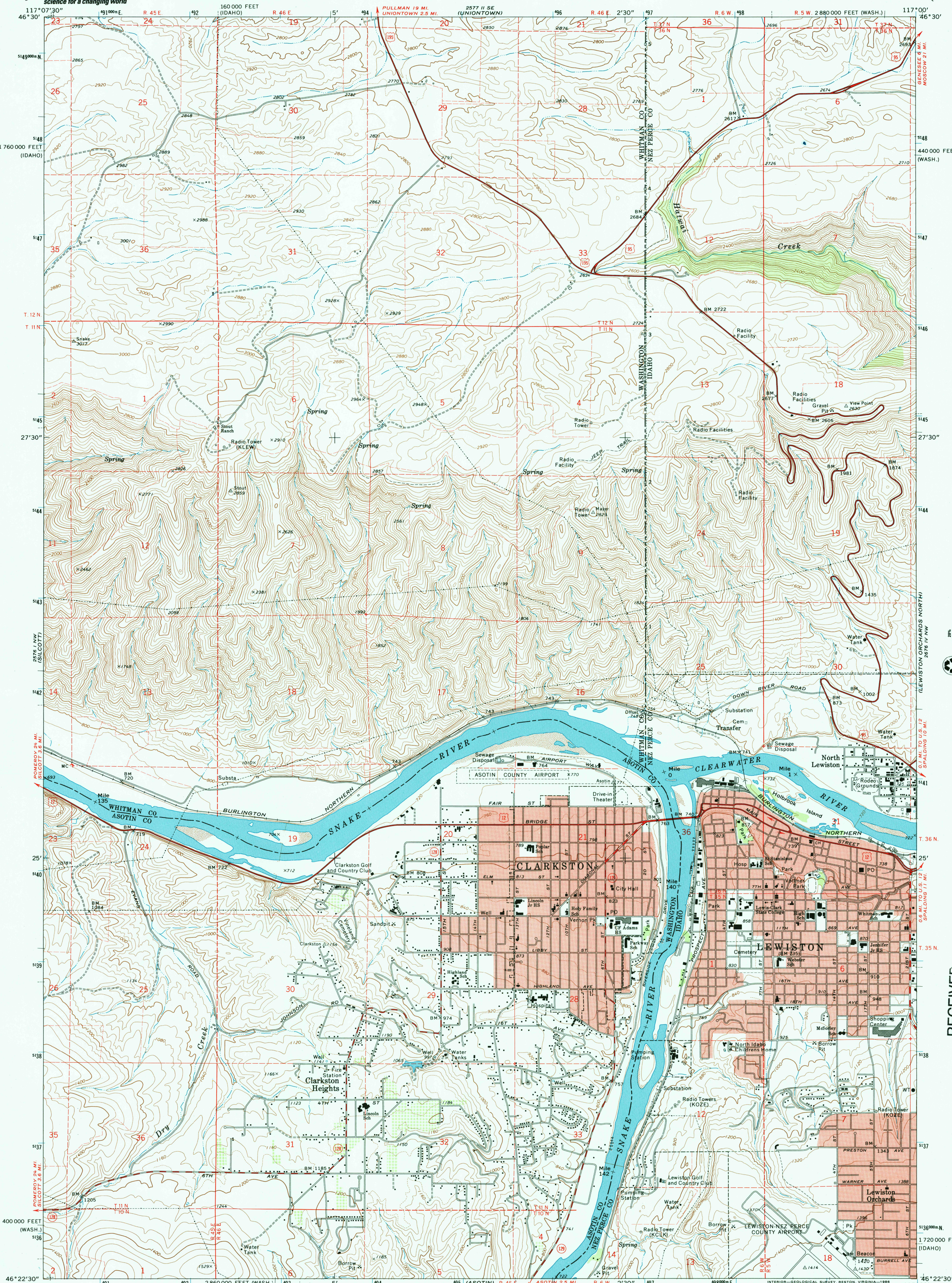




U.S. DEPARTMENT OF THE INTERIOR
U.S. GEOLOGICAL SURVEY

CLARKSTON QUADRANGLE
WASHINGTON-IDAHO
7.5 MINUTE SERIES (TOPOGRAPHIC)



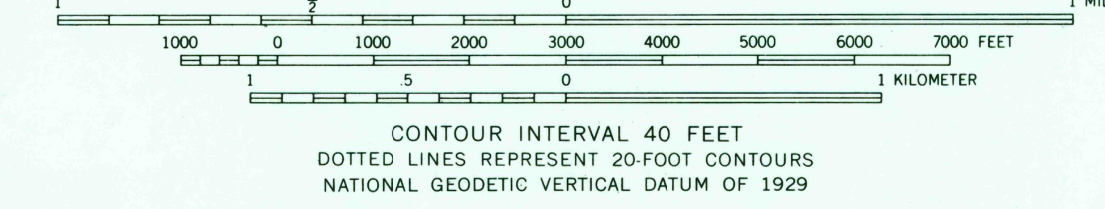
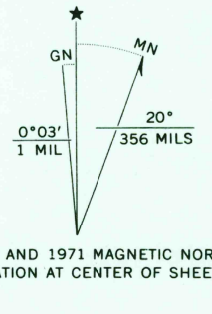
Mapped, edited, and published by the Geological Survey
Control by USGS and USC&GS

Topography by photogrammetric methods from aerial
photographs taken 1970. Field checked 1971

Projection: Washington coordinate system, south zone
(Lambert conformal conic)
10,000-foot grid ticks based on Washington coordinate
system, south zone and Idaho coordinate system,
west zone

1000-meter Universal Transverse Mercator grid ticks,
zone 11, shown in blue. 1927 North American datum
To place on the predicted North American Datum 1983,
move the projection lines 16 meters north and
78 meters east as shown by dashed corner ticks

Red tint indicates areas in which only landmark buildings are shown



ROAD CLASSIFICATION
Primary highway, hard surface
Secondary highway, hard surface
Light-duty road, hard or improved surface
Unimproved road
Interstate Route
U. S. Route
State Route

CLARKSTON, WASH.-IDAHO
46117-D1-TF-024
1971
DMA 2576 1 NE-SERIES V891

RECEIVED
FEB 28 2002
JANIS WILU
HISTORICAL MAP ARCHIVES

