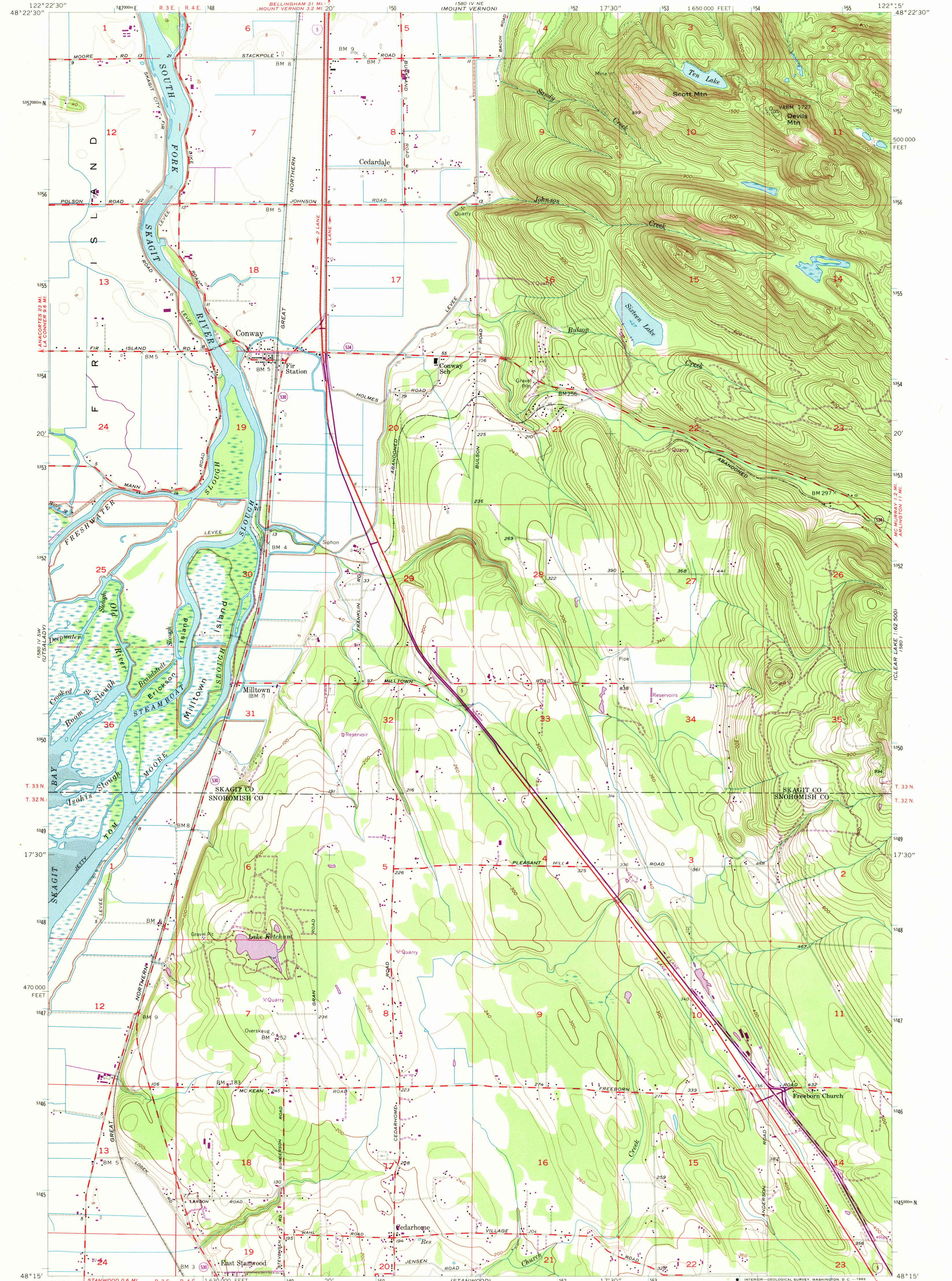


UNITED STATES  
DEPARTMENT OF THE INTERIOR  
GEOLOGICAL SURVEY

CONWAY QUADRANGLE  
WASHINGTON  
7.5 MINUTE SERIES (TOPOGRAPHIC)  
SE/4 MOUNT VERNON 15' QUADRANGLE



Mapped, edited, and published by the Geological Survey

Control by USGS and USC&GS

Topography from aerial photographs by multiplex methods

and by planetable surveys 1956. Aerial photographs taken 1954

Polyconic projection. 1927 North American datum

10,000-foot grid based on Washington coordinate system,

north zone

1000-meter Universal Transverse Mercator grid ticks,

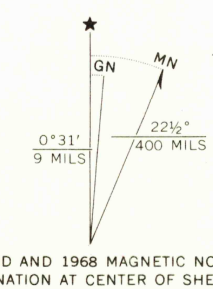
zone 10, shown in blue

Dashed land lines indicate approximate locations

Unchecked elevations are shown in brown

Revisions shown in purple compiled from aerial photographs

taken 1968. This information not field checked



CONTOUR INTERVAL 20 FEET

DASHED LINES REPRESENT 5-FOOT CONTOURS

DATUM IS MEAN SEA LEVEL

SHORELINE SHOWN REPRESENTS THE APPROXIMATE LINE OF MEAN HIGH WATER

THE MEAN RANGE OF TIDE IS APPROXIMATELY 8 FEET

THIS MAP COMPLIES WITH NATIONAL MAP ACCURACY STANDARDS  
FOR SALE BY U.S. GEOLOGICAL SURVEY, DENVER, COLORADO 80225, OR WASHINGTON, D.C. 20242  
A FOLDER DESCRIBING TOPOGRAPHIC MAPS AND SYMBOLS IS AVAILABLE ON REQUEST

ROAD CLASSIFICATION

Heavy-duty ——— Light-duty ———

Medium-duty ——— Unimproved dirt ———

Interstate Route ——— State Route ———

WASHINGTON

CONWAY, WASH.

SE/4 MOUNT VERNON 15' QUADRANGLE

N4815—W12215/7.5

1956

PHOTOGRAPHED 1968

AMS 1580 IV SE—SERIES V891

Historical File  
Topographic Division

SEP 22 1969