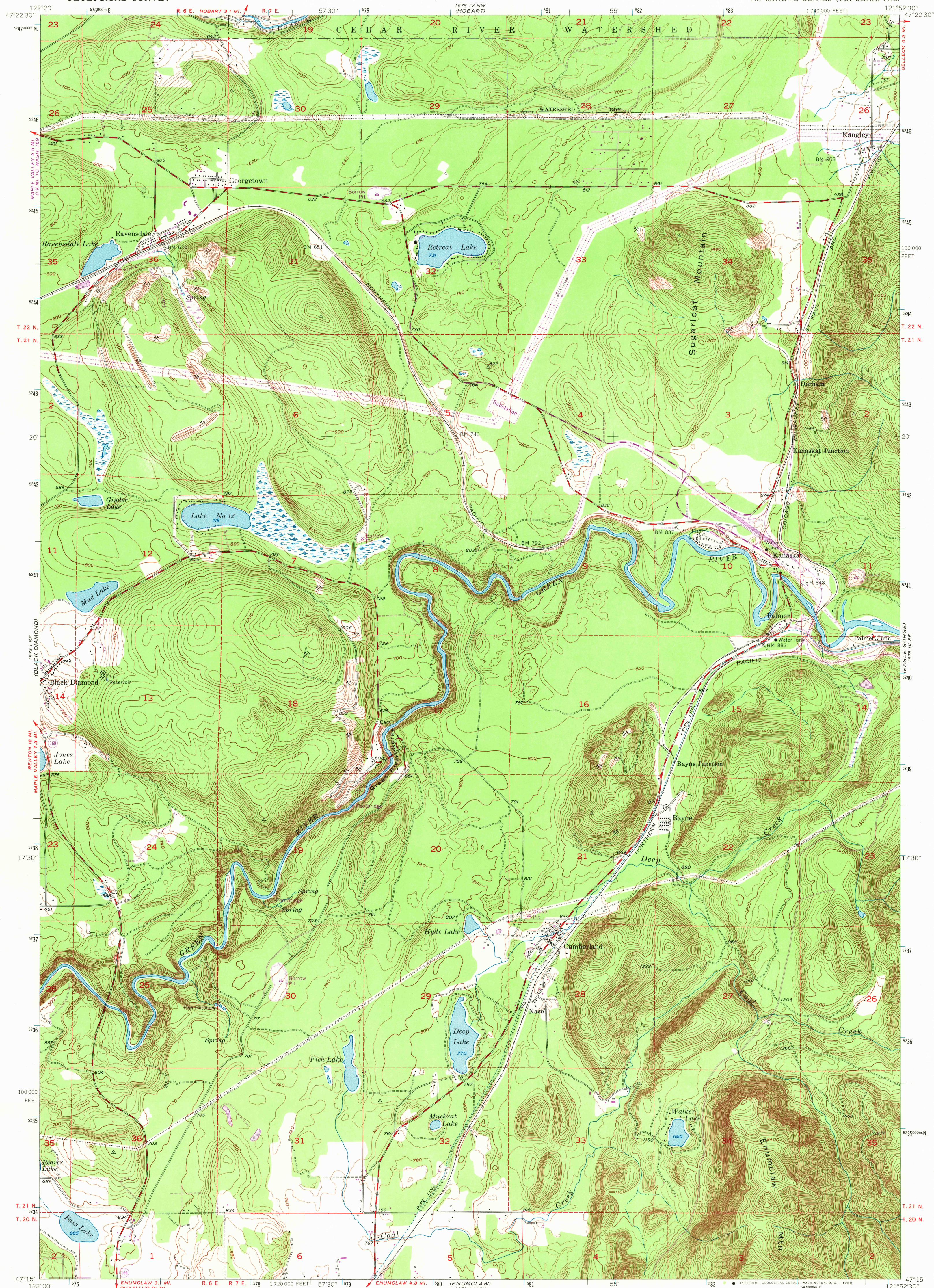


UNITED STATES
DEPARTMENT OF THE INTERIOR
GEOLOGICAL SURVEY

CUMBERLAND QUADRANGLE
WASHINGTON—KING CO.
7.5 MINUTE SERIES (TOPOGRAPHIC)



Mapped, edited, and published by the Geological Survey

Control by USGS and USC&GS

Topography from aerial photographs by multiplex methods

Aerial photographs taken 1952. Field check 1953

Polyconic projection. 1927 North American datum

10,000-foot grid based on Washington coordinate system, north zone

Travel within the Cedar River Watershed area is restricted

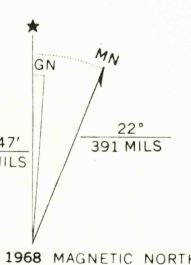
Dashed land lines indicate approximate locations

Unchecked elevations are shown in brown

1000-meter Universal Transverse Mercator grid ticks,

zone 10, shown in blue

Revisions shown in purple compiled from aerial photographs
taken 1968. This information not field checked



CONTOUR INTERVAL 20 FEET
DATUM IS MEAN SEA LEVEL

THIS MAP COMPLIES WITH NATIONAL MAP ACCURACY STANDARDS
FOR SALE BY U.S. GEOLOGICAL SURVEY, DENVER, COLORADO 80225 OR WASHINGTON, D.C. 20242
A FOLDER DESCRIBING TOPOGRAPHIC MAPS AND SYMBOLS IS AVAILABLE ON REQUEST

ROAD CLASSIFICATION
Medium duty ——— Light duty ———
Unimproved dirt ———
State Route ———



CUMBERLAND, WASH.
N 4715—W12152.5/7.5

1953
PHOTOGRAPHED 1948
AMS 1678 IV SW—SERIES V891

U.S.G.S.
FILE COPY
TOPOGRAPHIC DIVISION

3295
OCT 27 1969