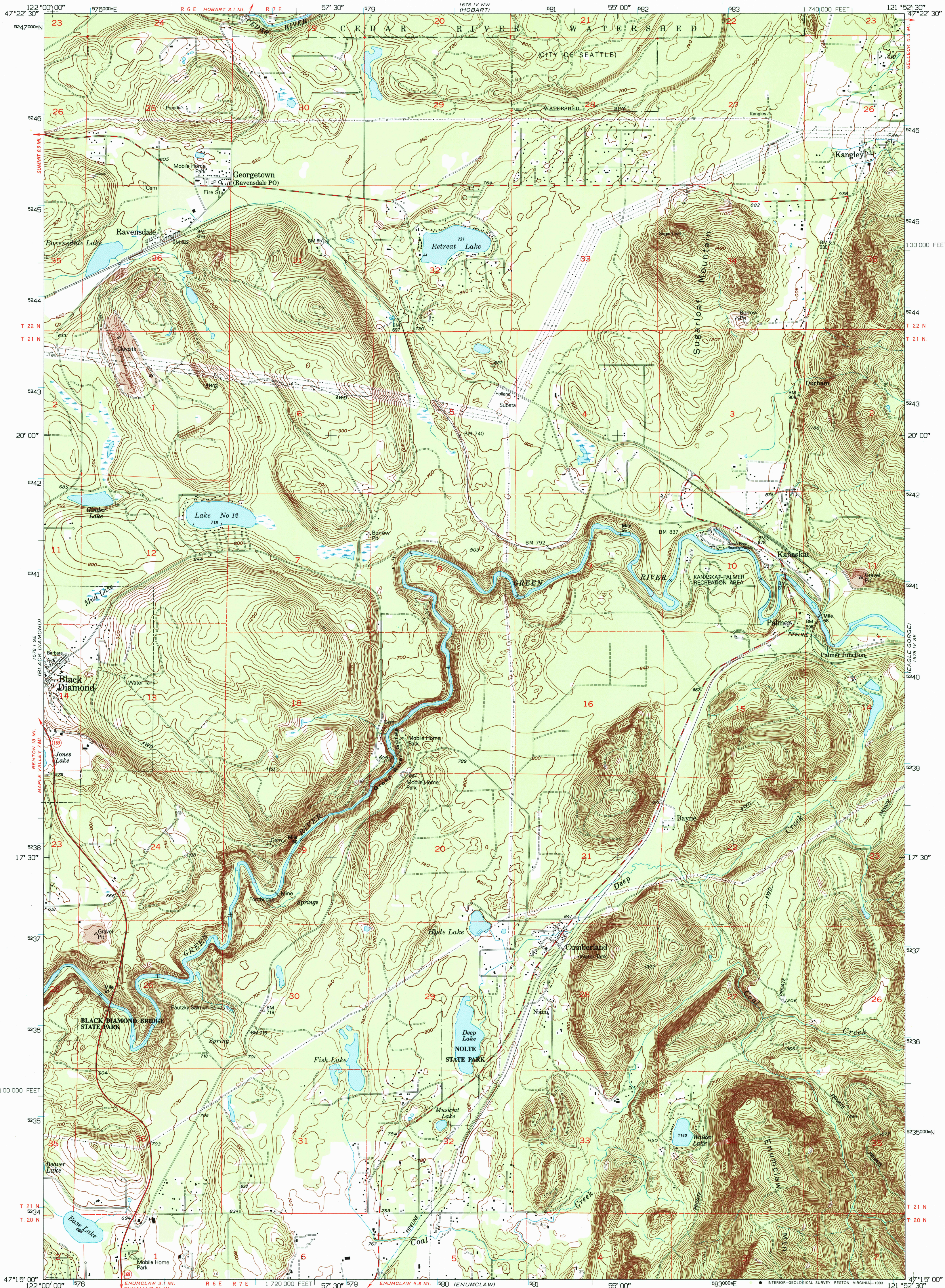


UNITED STATES
DEPARTMENT OF THE INTERIOR
GEOLOGICAL SURVEY

CUMBERLAND QUADRANGLE
WASHINGTON-KING CO.
7.5 MINUTE SERIES (TOPOGRAPHIC)



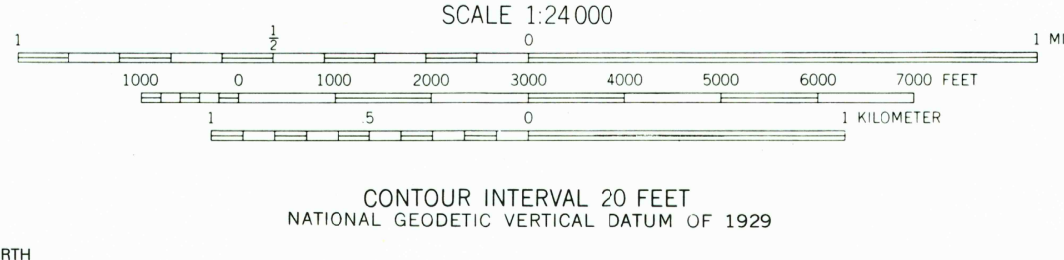
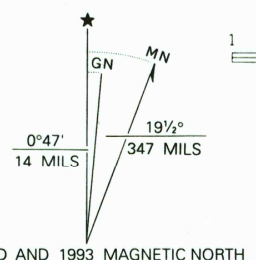
Produced by the United States Geological Survey
Control by USGS, NOS/NOAA and DMA

Compiled from aerial photographs taken 1952. Revised from aerial
photographs taken 1986 and other sources. Field checked 1990
Map edited 1993

1927 North American Datum (NAD 27). Projection and
10000-foot ticks: Washington Coordinate System, north zone
(Lambert Conformal Conic)

Blue 1000-meter Universal Transverse Mercator ticks, zone 10
North American Datum of 1983 (NAD 83) is shown by dashed
corner ticks. The values of the shift between NAD 27 and NAD 83
for 7.5-minute intersections are given in USGS Bulletin 1875

There may be private inholdings within the boundaries of the
National or State reservations shown on this map
Travel within Cedar River Watershed area is restricted



ROAD CLASSIFICATION	
Primary highway, hard surface	Light-duty road, hard or improved surface
Secondary highway, hard surface	Unimproved road
Interstate Route	U. S. Route
	State Route

CUMBERLAND, WASH.
47121-C8-TF-024

1993

DMA 1678 IV SW-SERIES V891

