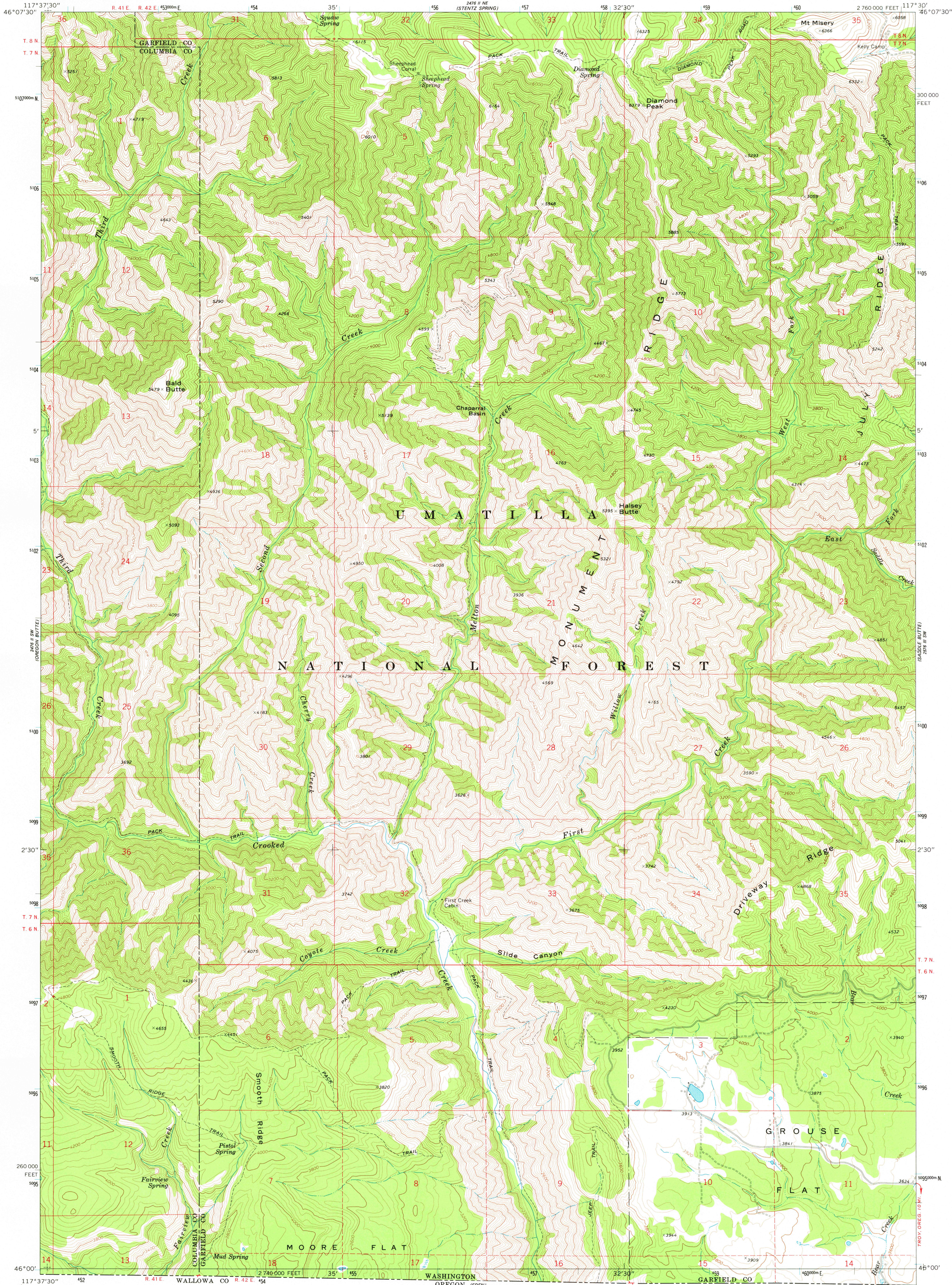


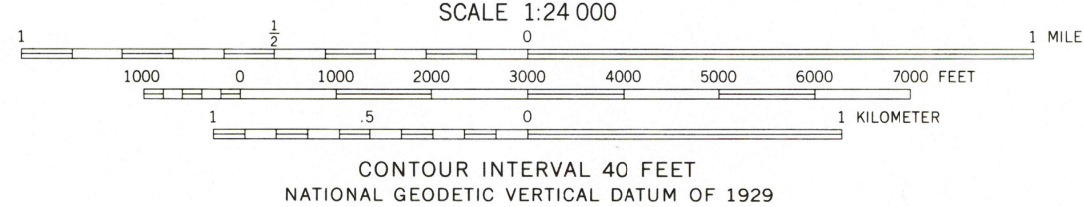
UNITED STATES
DEPARTMENT OF THE INTERIOR
GEOLOGICAL SURVEY

DIAMOND PEAK QUADRANGLE
WASHINGTON
7.5 MINUTE SERIES (TOPOGRAPHIC)



Mapped, edited, and published by the Geological Survey
Control by USGS and USC&GS
Topography by photogrammetric methods from aerial
photographs taken 1966. Field checked 1967
Polyconic projection. 1927 North American datum
10,000-foot grid based on Washington coordinate system,
south zone
1000-meter Universal Transverse Mercator grid ticks,
zone 11, shown in blue
To place on the predicted North American Datum 1983
move the projection lines 17 meters north and
80 meters east as shown by dashed corner ticks
There may be private inholdings within the boundaries of
the National or State reservations shown on this map

Map photoinspected 1976
No major culture or drainage changes observed



THIS MAP COMPLIES WITH NATIONAL MAP ACCURACY STANDARDS
FOR SALE BY U.S. GEOLOGICAL SURVEY, DENVER, COLORADO 80225, OR RESTON, VIRGINIA 22092
A FOLDER DESCRIBING TOPOGRAPHIC MAPS AND SYMBOLS IS AVAILABLE ON REQUEST



ROAD CLASSIFICATION
Light-duty ————— Unimproved dirt —————

USGS
Historical File
Topographic Division

DIAMOND PEAK, WASH.
N4600—W11730/7.5

1967
PHOTOINSPECTED 1976
DMA 2476 II SE—SERIES V81

JUN - 6 1980

1600