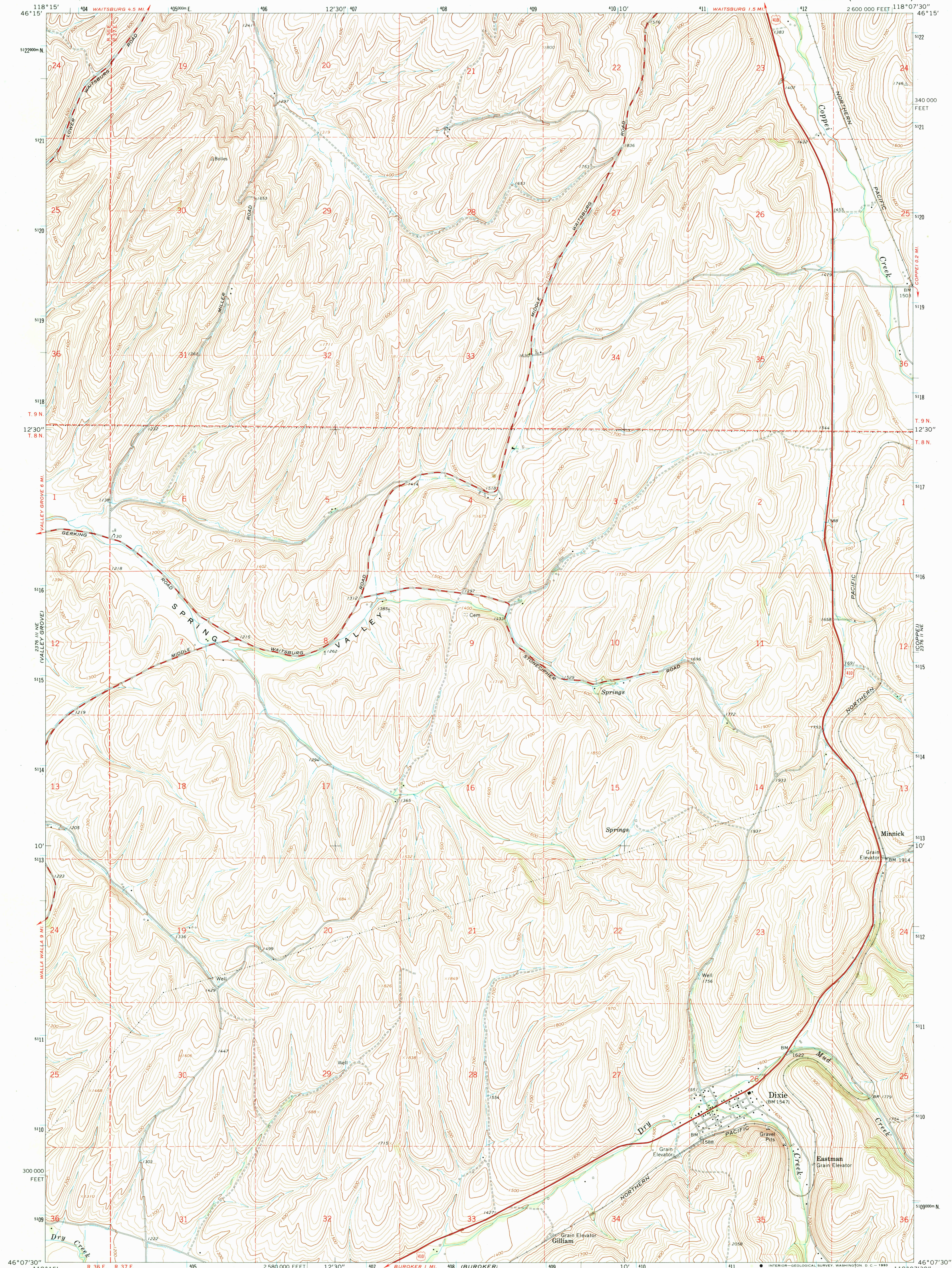


UNITED STATES
DEPARTMENT OF THE INTERIOR
GEOLOGICAL SURVEY

DIXIE QUADRANGLE
WASHINGTON—WALLA WALLA CO.
7.5 MINUTE SERIES (TOPOGRAPHIC)



Mapped, edited, and published by the Geological Survey

Control by USGS and USC&GS

Topography by photogrammetric methods from aerial

photographs taken 1964. Field checked 1966

Polyconic projection. 1927 North American datum

10,000-foot grid based on Washington coordinate system,

south zone

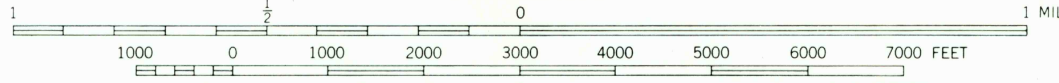
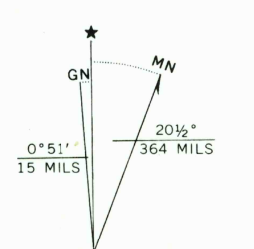
1000-meter Universal Transverse Mercator grid ticks,

zone 11, shown in blue

Fine red dashed lines indicate selected fence lines

Map photinspected 1976

No major culture or drainage changes observed



CONTOUR INTERVAL 20 FEET

DATUM IS MEAN SEA LEVEL



ROAD CLASSIFICATION	
Heavy-duty	Light-duty
Medium-duty	Unimproved dirt
	U.S. Route

DIXIE, WASH.

N4607.5—W11807.5/7.5

1966

PHOTOINSPECTED 1976

AMS 2376 II NW—SERIES V891

