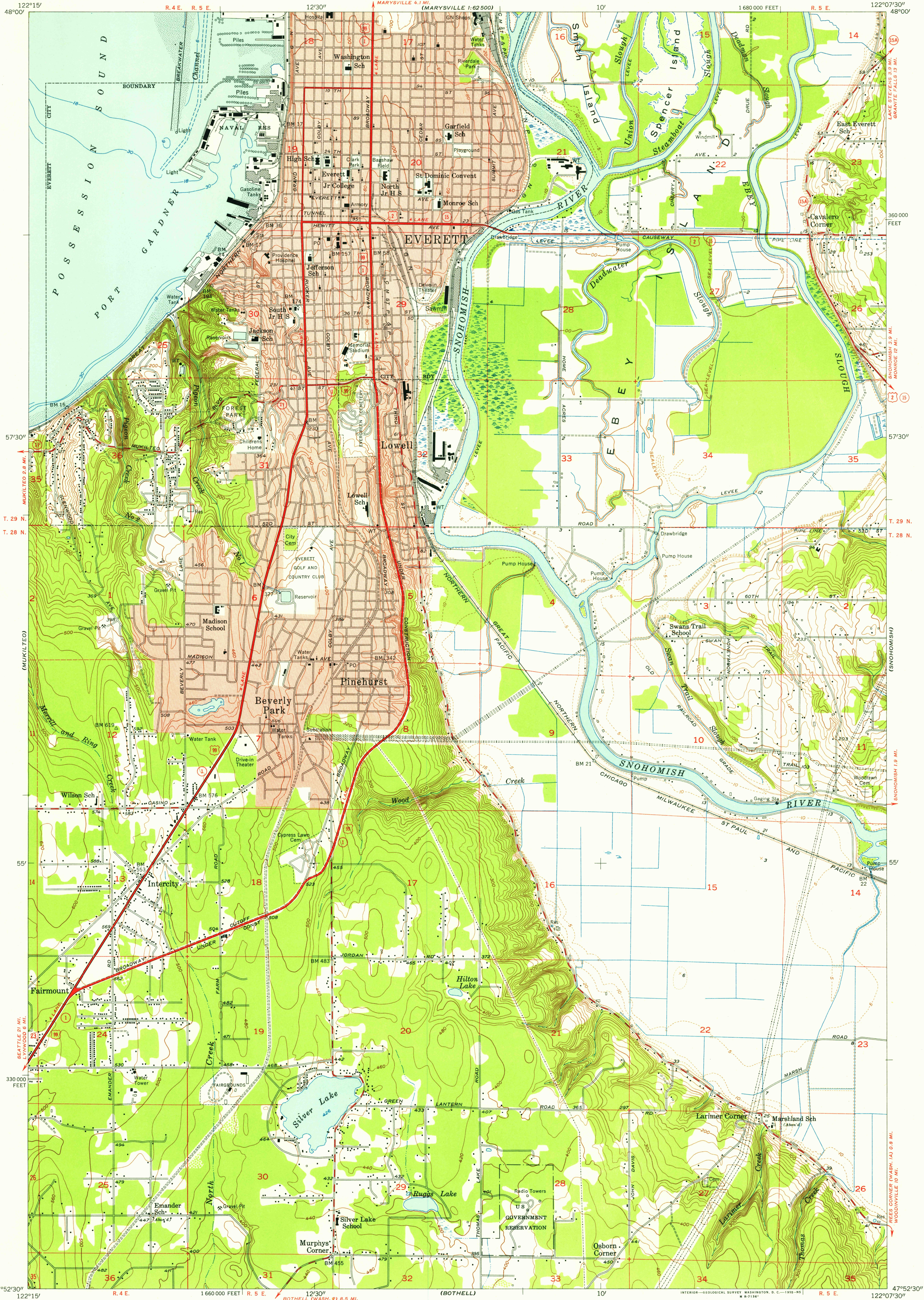


UNITED STATES  
DEPARTMENT OF THE INTERIOR  
GEOLOGICAL SURVEY

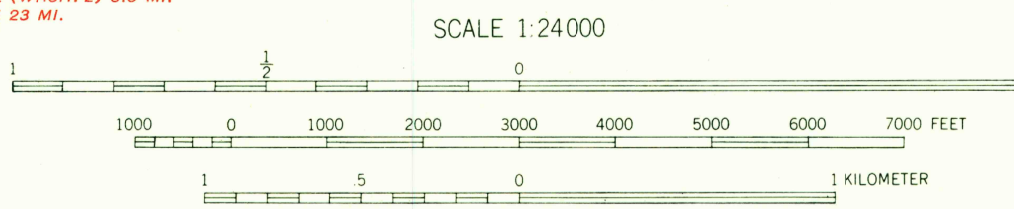
EVERETT QUADRANGLE  
WASHINGTON-SNOHOMISH CO.  
7.5 MINUTE SERIES (TOPOGRAPHIC)  
NW/4 EVERETT 15' QUADRANGLE

U.S.G.S.  
FILE COPY  
TOPOGRAPHIC DIVISION



Mapped, edited, and published by the Geological Survey  
Control by USGS and USC&GS  
Topography from aerial photographs by multiplex methods  
and by plane-table surveys 1953. Aerial photographs taken 1952  
Hydrography compiled from USC&GS Chart 6448  
Polyconic projection. 1927 North American datum  
10,000-foot grid based on Washington coordinate system, north zone  
Red tint indicates areas in which only landmark buildings are shown  
Dashed land lines indicate approximate locations

TRUE NORTH  
MAGNETIC NORTH  
APPROXIMATE MEAN  
DECLINATION, 1953



CONTOUR INTERVAL 20 FEET  
DASHED LINES REPRESENT 5 FOOT CONTOURS  
DATUM IS MEAN SEA LEVEL  
DEPTH CURVES IN FEET-DATUM IS MEAN LOWER LOW WATER  
SHORELINE SHOWN REPRESENTS THE APPROXIMATE LINE OF MEAN HIGH WATER  
THE AVERAGE RANGE OF TIDE IS APPROXIMATELY 6 FEET  
THIS MAP COMPLIES WITH NATIONAL MAP ACCURACY STANDARDS

FOR SALE BY U. S. GEOLOGICAL SURVEY, FEDERAL CENTER, DENVER, COLORADO OR WASHINGTON 25, D. C.  
A FOLDER DESCRIBING TOPOGRAPHIC MAPS AND SYMBOLS IS AVAILABLE ON REQUEST



ROAD CLASSIFICATION  
Heavy-duty 4 LANE 16 LANE Light-duty  
Medium-duty 4 LANE 16 LANE Unimproved dirt  
U. S. Route State Route

EVERETT, WASH.  
NW/4 EVERETT 15' QUADRANGLE  
N4752.5-W12207.5/7.5

1953

U.S.G.S.  
FILE COPY  
TOPOGRAPHIC DIVISION

JUN 10 1955

4840