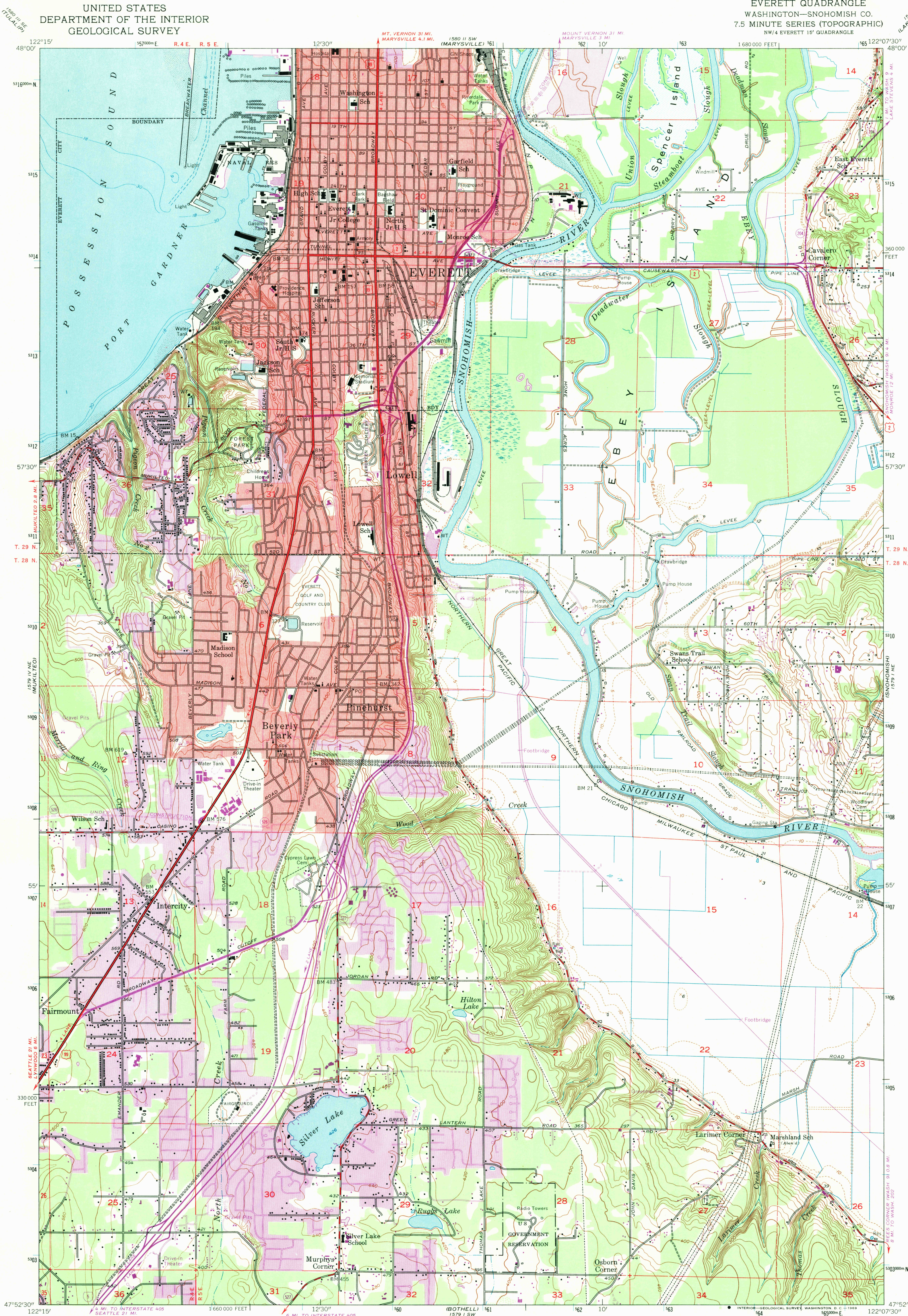


UNITED STATES
DEPARTMENT OF THE INTERIOR
GEOLOGICAL SURVEY

EVERETT QUADRANGLE
WASHINGTON—SNOHOMISH CO.
7.5 MINUTE SERIES (TOPOGRAPHIC)
NW/4 EVERETT 15' QUADRANGLE



Mapped, edited, and published by the Geological Survey

Control by USGS and USC&GS

Topography from aerial photographs by multiplex methods
and by plane-table surveys 1953. Aerial photographs taken 1952

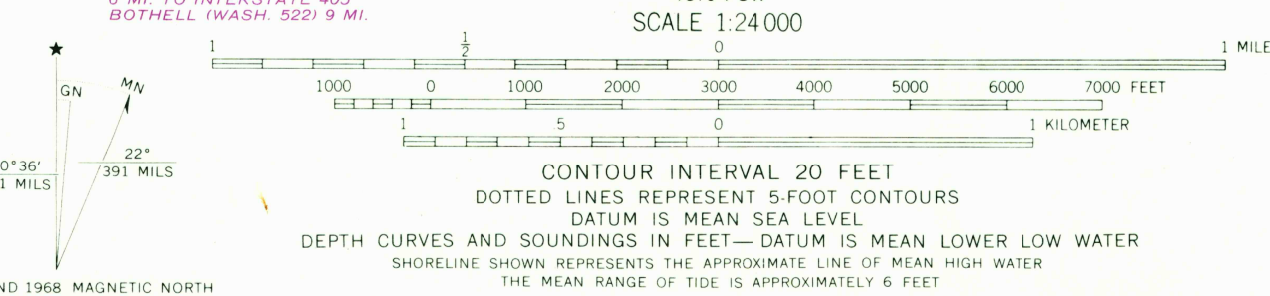
Hydrography compiled from USC&GS Chart 6448

Polygonic projection. 1927 North American datum
10,000-foot grid based on Washington coordinate system, north zone
1000-meter Universal Transverse Mercator grid ticks,
zone 10, shown in blue

Red tint indicates areas in which only landmark buildings are shown

Revisions shown in purple compiled from aerial photographs
taken 1968. This information not field checked

Purple tint indicates extension of urban areas



THIS MAP COMPLIES WITH NATIONAL MAP ACCURACY STANDARDS
FOR SALE BY U.S. GEOLOGICAL SURVEY, DENVER, COLORADO 80225, OR WASHINGTON, D.C. 20242
A FOLDER DESCRIBING TOPOGRAPHIC MAPS AND SYMBOLS IS AVAILABLE ON REQUEST

ROAD CLASSIFICATION
Heavy-duty ——— Light-duty ———
Medium-duty ——— Unimproved dirt ———
U.S. Route ——— State Route ———
Interstate Route ———

EVERETT, WASH.
NW/4 EVERETT 15' QUADRANGLE
N4752.5—W12207.5/7.5

USGS
Historical File
Topographic Division
1953
PHOTOGRAPHED 1968
AMS 1579 I NW—SERIES V891

U.S.G.S.
FILE COPY
TOPOGRAPHIC DIVISION

DEC 2 3 1953