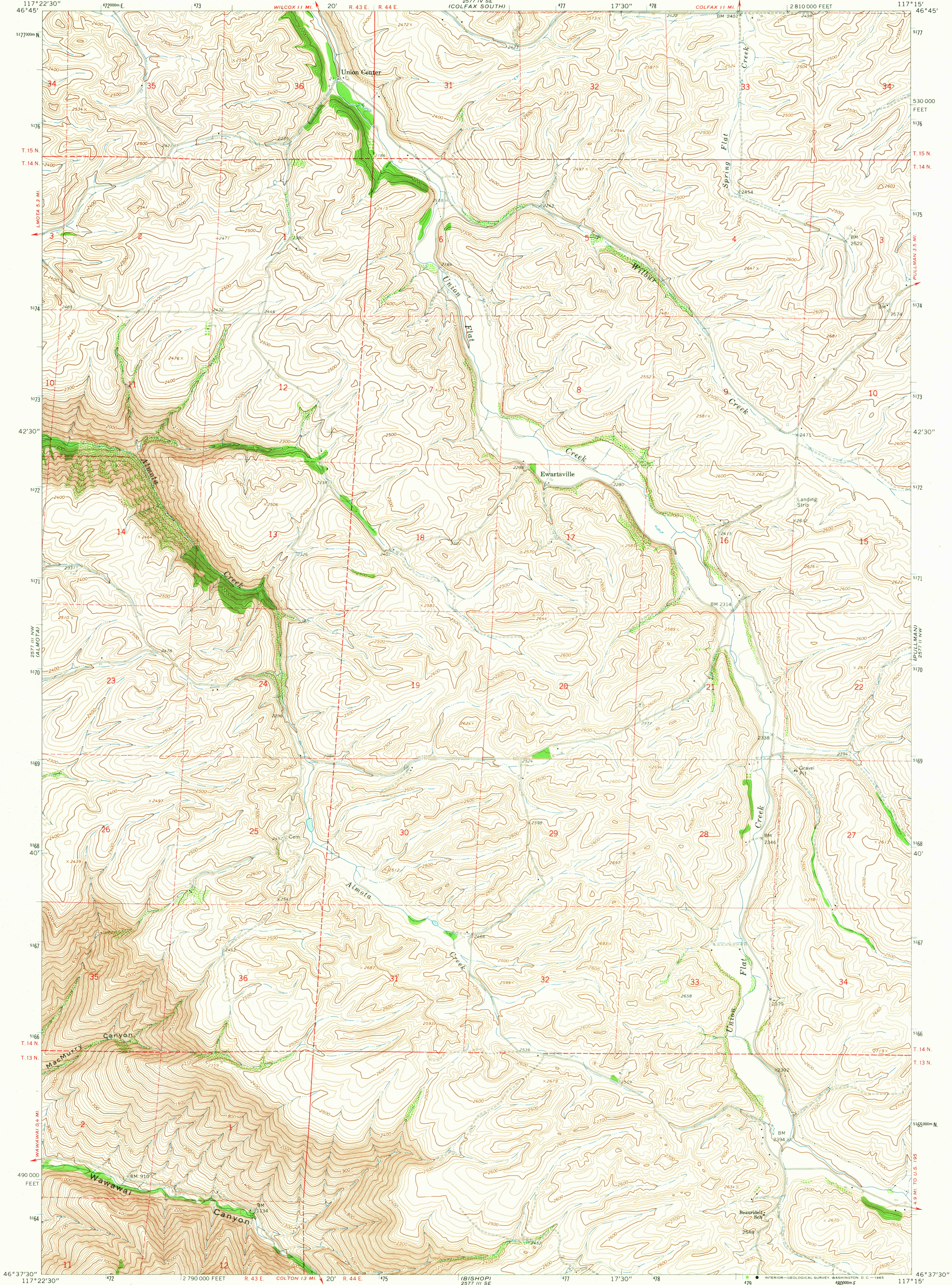


2577 III SW
T14N R43E

UNITED STATES
DEPARTMENT OF THE INTERIOR
GEOLOGICAL SURVEY

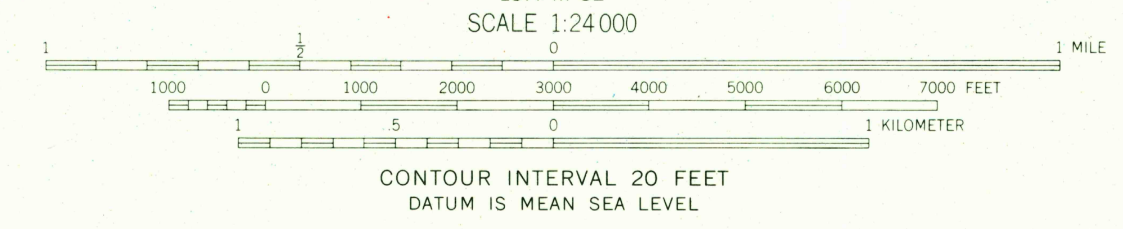
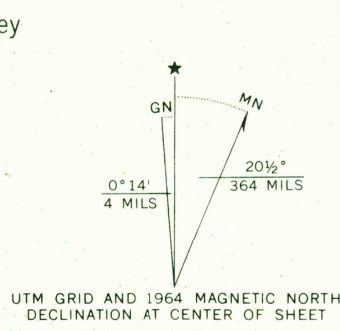
EWARTSVILLE QUADRANGLE
WASHINGTON-WHITMAN CO.
7.5 MINUTE SERIES (TOPOGRAPHIC)

2577 III SW
T14N R43E



2577 III SW
T14N R43E

Mapped, edited, and published by the Geological Survey
Control by USGS and USC&GS
Topography by photogrammetric methods from aerial
photographs taken 1961. Field checked 1964
Polyconic projection. 1927 North American datum
10,000-foot grid based on Washington coordinate system,
south zone
1000-meter Universal Transverse Mercator grid ticks,
zone 11, shown in blue
Certain land lines are omitted because of insufficient data



ROAD CLASSIFICATION
Light-duty ————— Unimproved dirt —————

EWARTSVILLE, WASH.
N4637.5-W11715.75

USGS
Historical File
Topographic Division

1964
AMS 2577 III NE-SERIES V891

U.S.G.S.
FILE COPY
TOPOGRAPHIC DIVISION

SEP 8 1965
2577

THIS MAP COMPLIES WITH NATIONAL MAP ACCURACY STANDARDS
FOR SALE BY U.S. GEOLOGICAL SURVEY, DENVER, COLORADO 80225, OR WASHINGTON, D.C. 20242
A FOLDER DESCRIBING TOPOGRAPHIC MAPS AND SYMBOLS IS AVAILABLE ON REQUEST