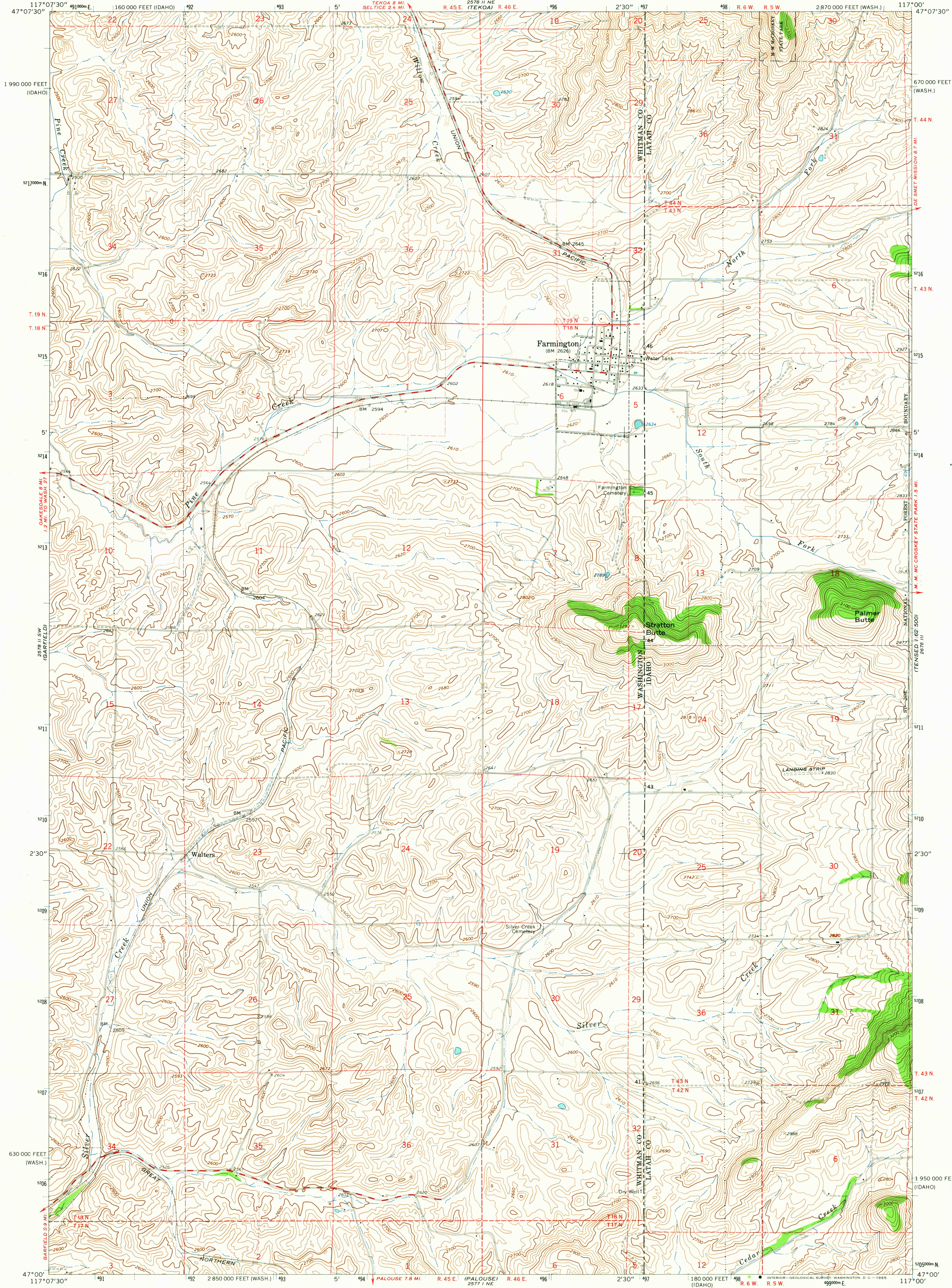


2578 II NW
(OAKESDALE)

UNITED STATES
DEPARTMENT OF THE INTERIOR
GEOLOGICAL SURVEY

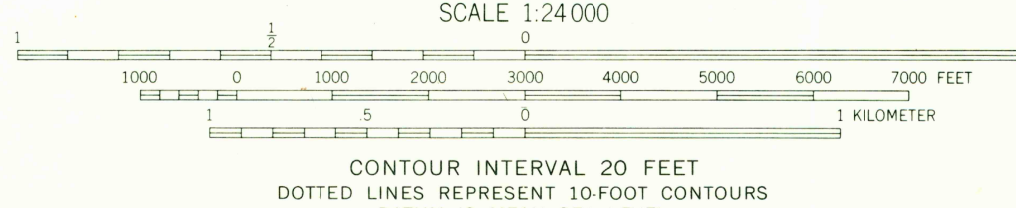
FARMINGTON QUADRANGLE
WASHINGTON-IDAHO
7.5 MINUTE SERIES (TOPOGRAPHIC)

2578 II SE
(TENNESSEE)



Mapped, edited, and published by the Geological Survey
Control by USGS and USC&GS
Topography by photogrammetric methods from aerial
photographs taken 1961. Field checked 1964
Polyconic projection. 1927 North American datum
10,000-foot grids based on Washington coordinate system,
south zone, and Idaho coordinate system, west zone
1000-meter Universal Transverse Mercator grid ticks,
zone 11, shown in blue
Fine red dashed lines indicate selected fence lines

UTM GRID AND 1964 MAGNETIC NORTH
DECLINATION AT CENTER OF SHEET



ROAD CLASSIFICATION
Medium-duty ——— Light-duty ———
Unimproved dirt - - - - -



FARMINGTON, WASH.-IDAHO
N4700—W11700/7.5

USGS
Historical File
Topographic Division
1964
AMS 2578 II SE—SERIES V891

JUN 2 1965
113175
FREE COPY
TOPOGRAPHIC DIVISION