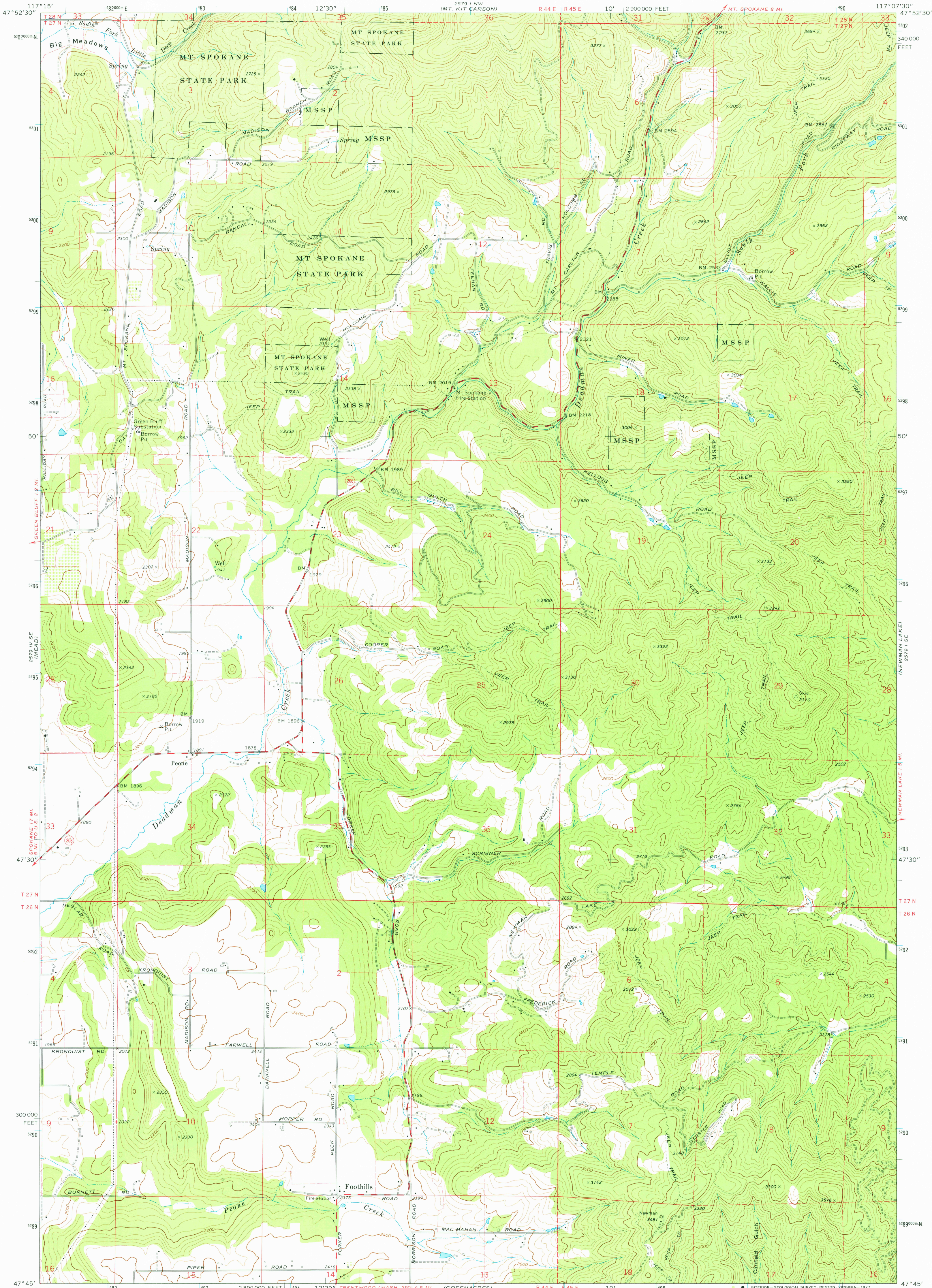


2579 I NW  
(KIT CARSON)

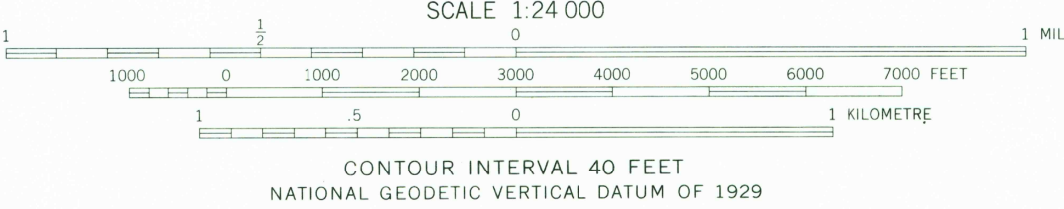
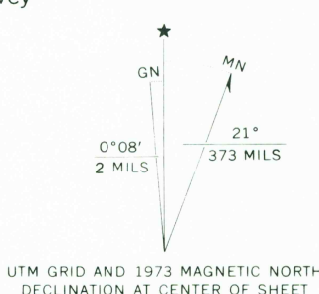
UNITED STATES  
DEPARTMENT OF THE INTERIOR  
GEOLOGICAL SURVEY

FOOTHILLS QUADRANGLE  
WASHINGTON-SPOKANE CO.  
7.5 MINUTE SERIES (TOPOGRAPHIC)

2579 I NE  
(MT. SPOKANE)



Mapped, edited, and published by the Geological Survey  
Control by USGS and NOS/NOAA  
Topography by photogrammetric methods from aerial  
photographs taken 1972. Field checked 1973  
Projection and 10,000-foot grid ticks: Washington coordinate  
system, north zone (Lambert conformal conic)  
1000-metre Universal Transverse Mercator grid ticks,  
zone 11, shown in blue. 1927 North American datum  
Fine red dashed lines indicate selected fence lines



ROAD CLASSIFICATION  
Primary highway, hard surface  
Secondary highway, hard surface  
Light-duty road, hard or improved surface  
Unimproved road  
Interstate Route  
U. S. Route  
State Route



FOOTHILLS, WASH.  
SW 1/4 MT. SPOKANE 15' QUADRANGLE  
N4745-W11707.5/7.5  
1973  
AMS 2579 I SW-SERIES V891

MAY 02 1977

2800