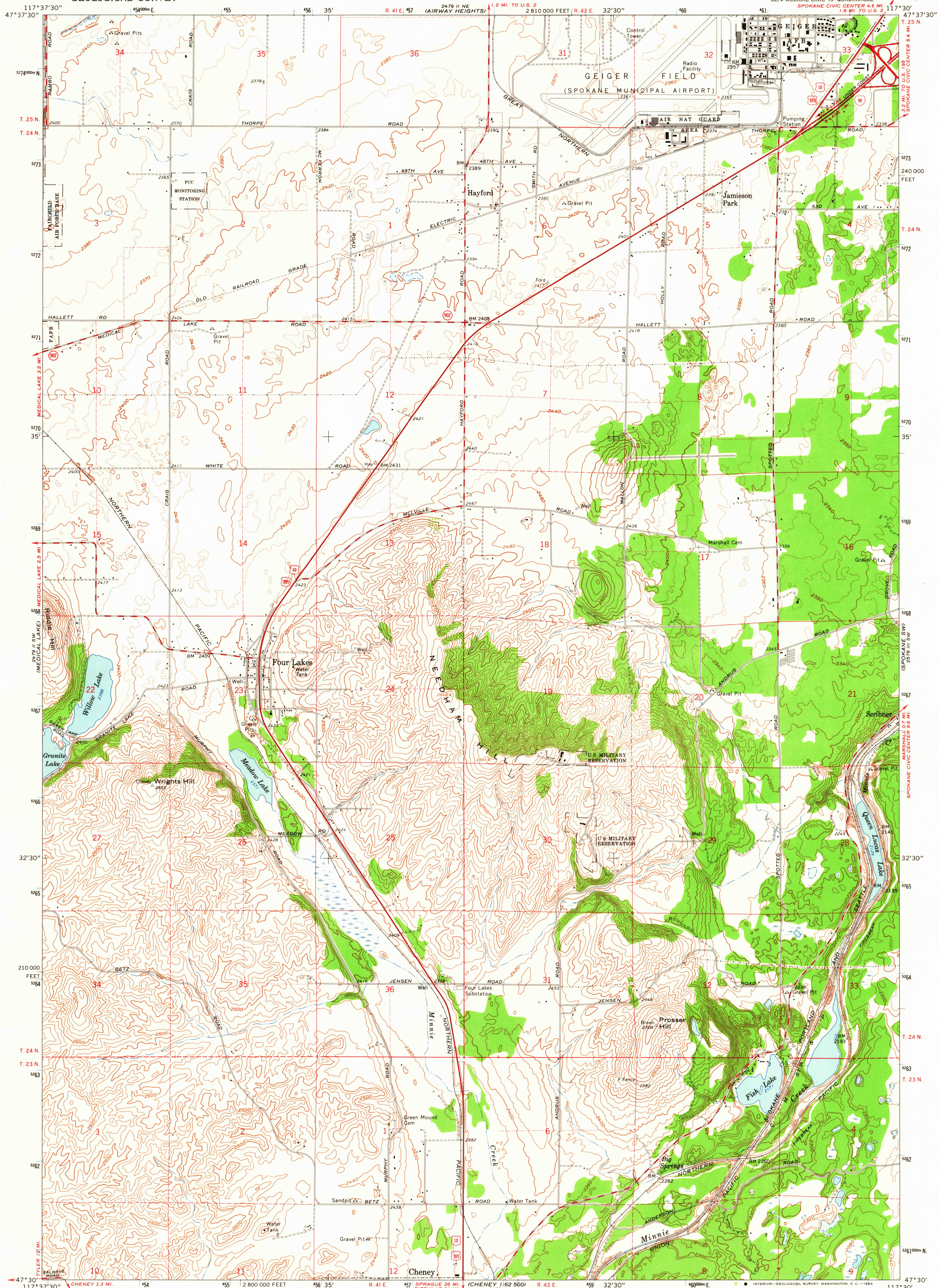
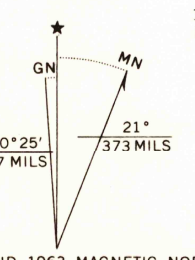


UNITED STATES
DEPARTMENT OF THE INTERIOR
GEOLOGICAL SURVEY

FOUR LAKES QUADRANGLE
WASHINGTON-SPOKANE CO.
7.5 MINUTE SERIES (TOPOGRAPHIC)



Maped, edited, and published by the Geological Survey
Control by USGS and USC&GS
Topography by photogrammetric methods from aerial photographs
taken 1952. Field checked 1954. Revised from aerial
photographs taken 1962. Field checked 1963
Polyconic projection. 1927 North American datum
10,000-foot grid based on Washington coordinate system, north zone
1000-meter Universal Transverse Mercator grid ticks,
zone 11, shown in blue
Fine red dashed lines indicate selected fence lines



SCALE 1:24,000
CONTOUR INTERVAL 20 FEET
DOTTED LINES REPRESENT 10-FOOT CONTOURS
DATUM IS MEAN SEA LEVEL



ROAD CLASSIFICATION
Heavy-duty ——— Light-duty ———
Medium-duty ——— Unimproved dirt ———
Interstate Route U.S. Route State Route

FOUR LAKES, WASH.
SE/4 MEDICAL LAKE 15' QUADRANGLE
N4730—W11730/7.5

1963

AMS 2479 II SE—SERIES V891

OCT 14 1964

U.S.G.S.
FILE COPY
TOPOGRAPHIC DIVISION

3135