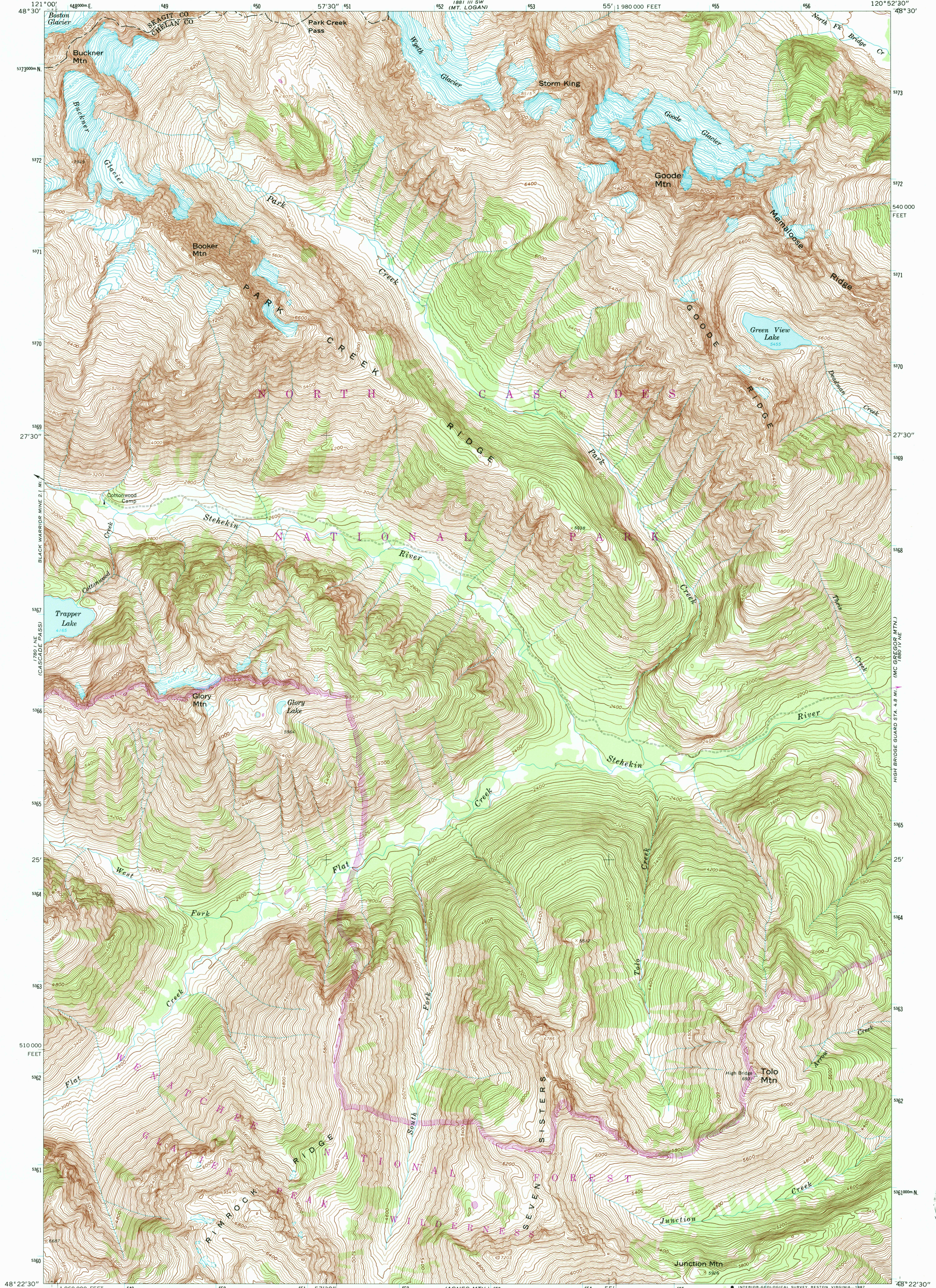
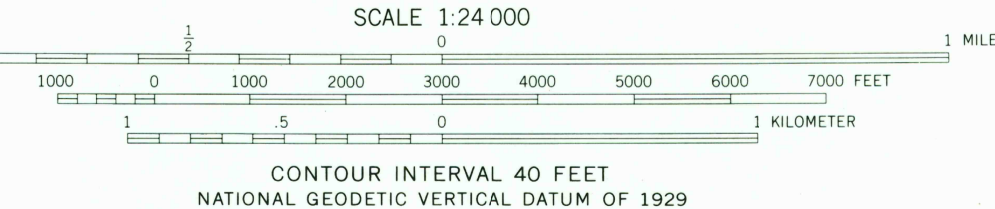


UNITED STATES
DEPARTMENT OF THE INTERIOR
GEOLOGICAL SURVEY

GOODE MTN. QUADRANGLE
WASHINGTON
7.5 MINUTE SERIES (TOPOGRAPHIC)



Mapped, edited, and published by the Geological Survey
Control by USGS and NOS/NOAA
Topography by photogrammetric methods from aerial photographs taken 1958. Field checked 1963
Polyconic projection. 1927 North American Datum
10,000-foot grid based on Washington coordinate system, north zone
1000-meter Universal Transverse Mercator grid ticks, zone 10, shown in blue
Land lines have not been established in this area
There may be private inholdings within the boundaries of the National or State reservations shown on this map
To place on the predicted North American Datum 1983 move the projection lines 21 meters north and 89 meters east as shown by dashed corner ticks



ROAD CLASSIFICATION
Unimproved dirt =====

GOODE MTN., WASH.
48120-D8-TF-024
1963
PHOTO REVISITED 1987
DMA 1880 IV NW-SERIES V891

FOR SALE BY U.S. GEOLOGICAL SURVEY
DENVER, COLORADO 80225, OR RESTON, VIRGINIA 22092
A FOLDER DESCRIBING TOPOGRAPHIC MAPS AND SYMBOLS IS AVAILABLE ON REQUEST

Revisions shown in purple and woodland
compiled from aerial photographs taken 1984
and other source data. Partial field check
by U. S. Forest Service. Map edited 1987

