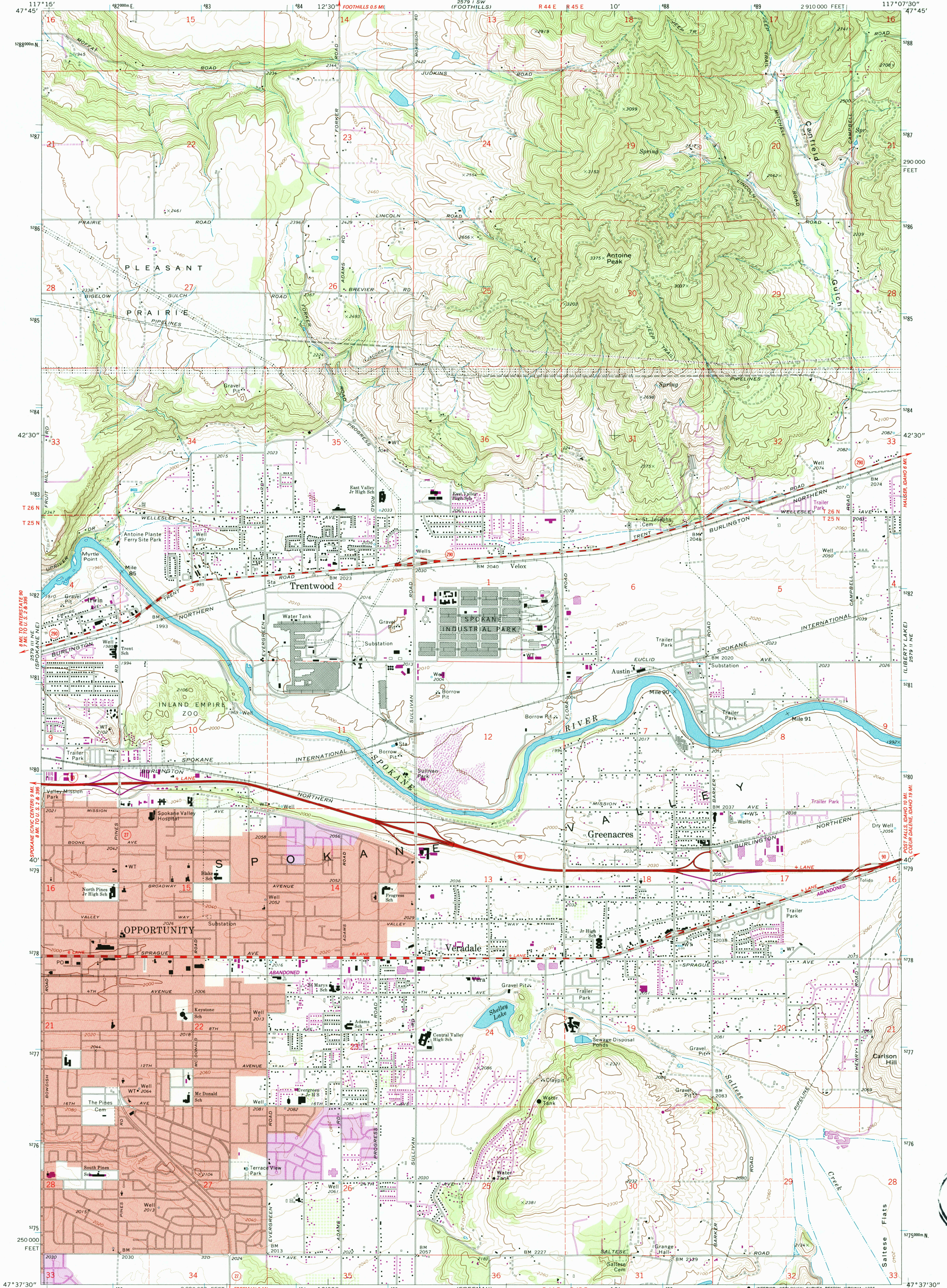


25° 15' N
117° 15' W
25° 15' N
117° 15' W

UNITED STATES
DEPARTMENT OF THE INTERIOR
GEOLOGICAL SURVEY

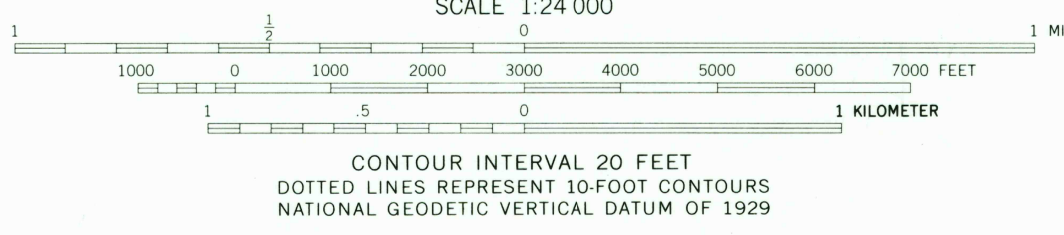
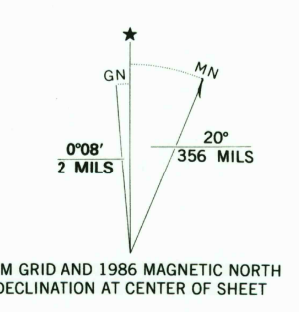
GREENACRES QUADRANGLE
WASHINGTON-SPOKANE CO.
7.5 MINUTE SERIES (TOPOGRAPHIC)
NW 4 GREENACRES 15' QUADRANGLE

25° 15' N
117° 15' W
25° 15' N
117° 15' W



25° 15' N
117° 15' W
25° 15' N
117° 15' W

Mapped, edited, and published by the Geological Survey
Control by USGS and NOS/NOAA
Topography by photogrammetric methods from aerial
photographs taken 1972. Field checked 1973.
Projection and 10,000-foot grid ticks: Washington coordinate
system, north zone (Lambert conformal conic).
1000-meter Universal Transverse Mercator grid ticks,
zone 11, shown in blue. 1927 North American datum
Red tint indicates areas in which only landmark buildings
are shown
Fine red dashed lines indicate selected fence lines
To place on the predicted North American Datum 1983,
move the projection lines 15 meters north and
79 meters east as shown by dashed corner ticks



ROAD CLASSIFICATION
Primary highway, hard surface
Secondary highway, hard surface
Light duty road, hard or improved surface
Unimproved road
Interstate Route
U. S. Route
State Route

QUADRANGLE LOCATION
Revisions shown in purple compiled from aerial
photographs taken 1982 and other sources
This information not field checked. Map edited 1986
Purple tint indicates extension of urban areas

GREENACRES, WASH.
NW 4 GREENACRES 15' QUADRANGLE
47117-F2-TF-024
1973
PHOTOREVISED 1986
DMA 2579 II NW-SERIES V891

