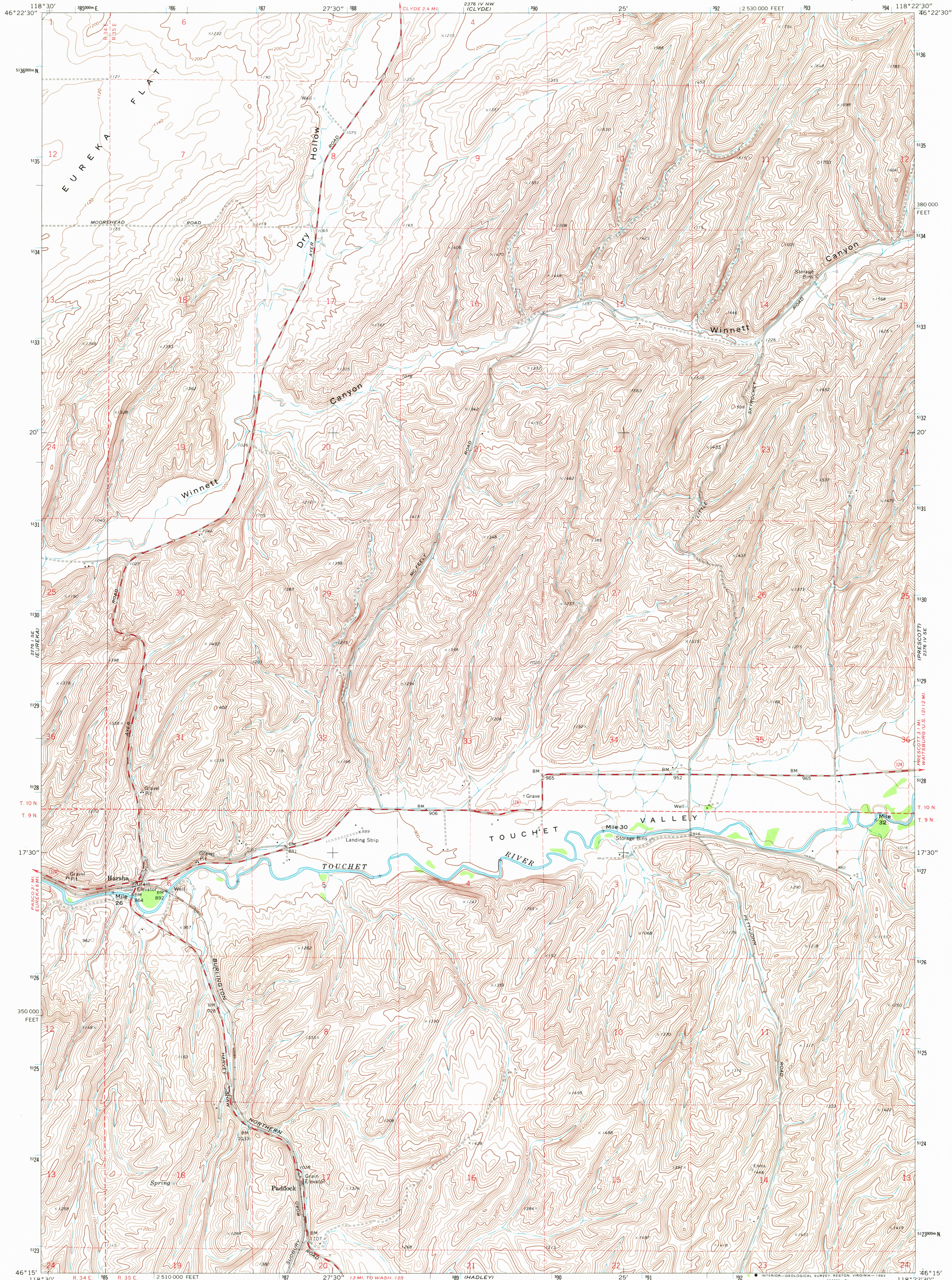


2376 IV NW
(CLYDE)

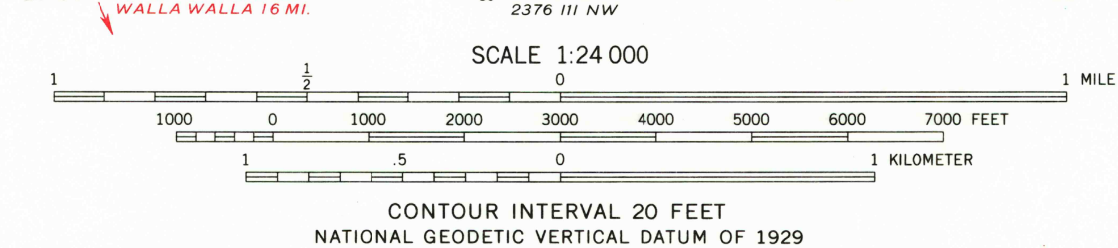
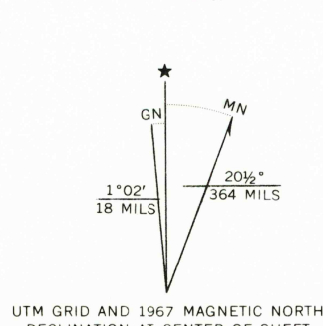
UNITED STATES
DEPARTMENT OF THE INTERIOR
GEOLOGICAL SURVEY

HARSHA QUADRANGLE
WASHINGTON—WALLA WALLA CO.
7.5 MINUTE SERIES (TOPOGRAPHIC)

2376 IV NE
(PLEASANT VIEW)



Mapped, edited, and published by the Geological Survey
Control by USGS and USC&GS
Topography by photogrammetric methods from aerial
photographs taken 1965. Field checked 1967
Polyconic projection. 1927 North American datum
10,000-foot grid based on Washington coordinate system,
south zone
1000-meter Universal Transverse Mercator grid ticks,
zone 11, shown in blue
To place on the predicted North American Datum 1983,
move the projection lines 18 meters north and
83 meters east as shown by dashed corner ticks
Fine red dashed lines indicate selected fence lines



ROAD CLASSIFICATION
Medium-duty ——— Light-duty ———
Unimproved dirt =====
○ State Route

HARSHA, WASH.
N4615—W11822.5/7.5

THIS MAP COMPLIES WITH NATIONAL MAP ACCURACY STANDARDS
FOR SALE BY U. S. GEOLOGICAL SURVEY, DENVER, COLORADO 80225, OR RESTON, VIRGINIA 22092
A FOLDER DESCRIBING TOPOGRAPHIC MAPS AND SYMBOLS IS AVAILABLE ON REQUEST

Map photoinspected 1976
No major culture or drainage changes observed

1967
PHOTOINSPECTED 1976
DMA 2376 IV SW—SERIES V891

RETURN TO:
USGS AND HISTORICAL MAP ARCHIVES

MAY 13 1983

1000