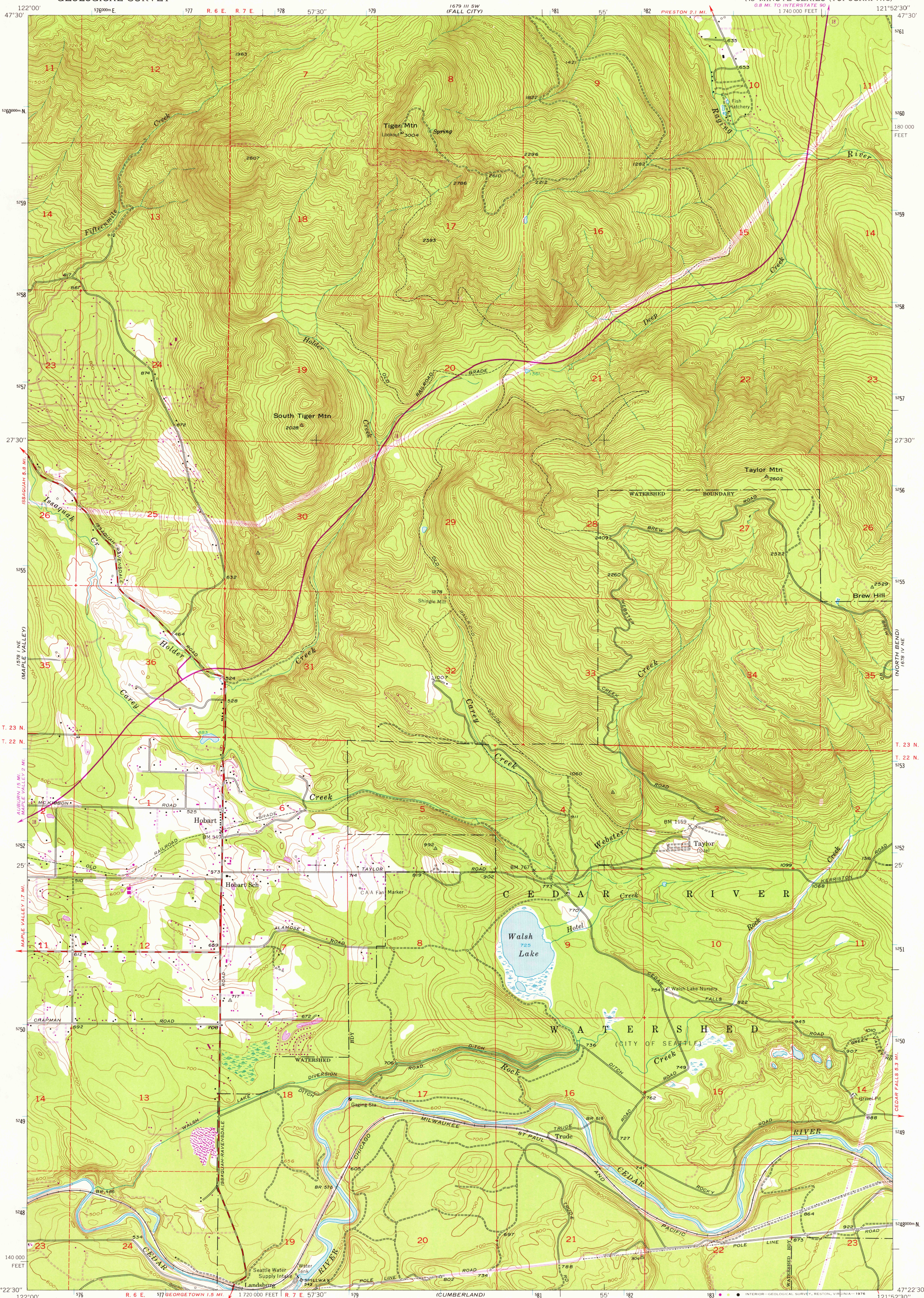


UNITED STATES  
DEPARTMENT OF THE INTERIOR  
GEOLOGICAL SURVEY

HOBART QUADRANGLE  
WASHINGTON—KING CO.  
7.5 MINUTE SERIES (TOPOGRAPHIC)



Mapped, edited, and published by the Geological Survey

Control by USGS and USC&GS

Topography from aerial photographs by multiplex methods

Aerial photographs taken 1952. Field check 1953

Polyconic projection. 1927 North American datum

10,000-foot grid based on Washington coordinate system, north zone

Travel within the Cedar River Watershed area is restricted

Dashed land lines indicate approximate locations

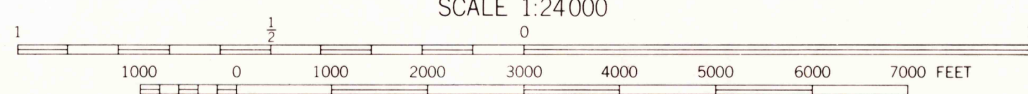
Unchecked elevations are shown in brown

1000-meter Universal Transverse Mercator grid ticks,

zone 10, shown in blue

Revisions shown in purple compiled from aerial photographs

taken 1968 and 1973. This information not field checked



CONTOUR INTERVAL 20 FEET

NATIONAL GEODETIC VERTICAL DATUM OF 1929



ROAD CLASSIFICATION  
Medium-duty ——— Light-duty ———  
Unimproved dirt ———  
State Route ——— Heavy-duty ———

HOBART, WASH.  
N4722.5—W12152.5/7.5

MAR 01 1976

FOR SALE BY U. S. GEOLOGICAL SURVEY, DENVER, COLORADO 80225, OR RESTON, VIRGINIA 22092  
A FOLDER DESCRIBING TOPOGRAPHIC MAPS AND SYMBOLS IS AVAILABLE ON REQUEST

USGS  
HISTORICAL FILE  
TOPOGRAPHIC DIVISION

1953  
PHOTOREVISED 1968 AND 1973  
AMS 1678 IV NW—SERIES V891