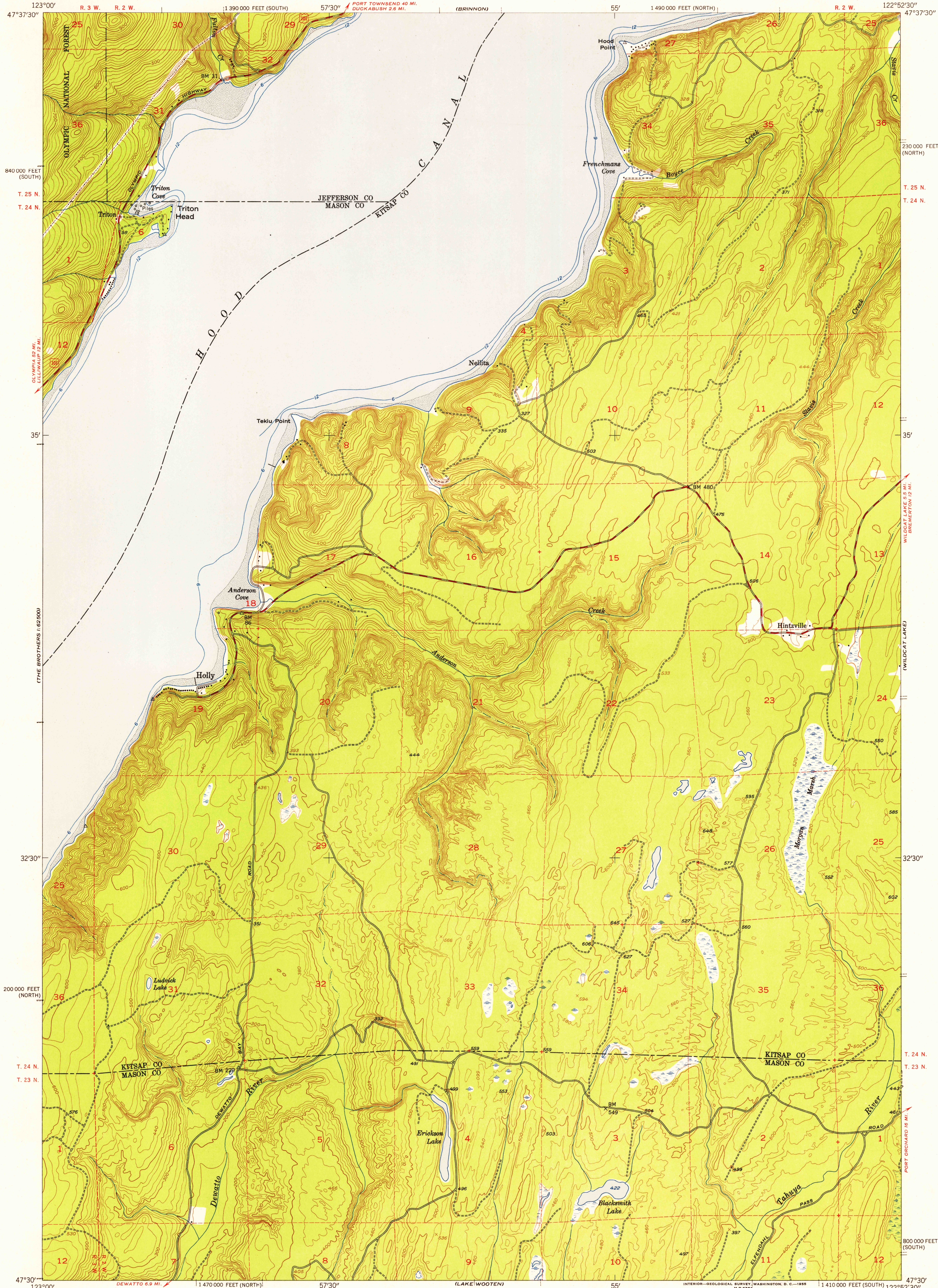


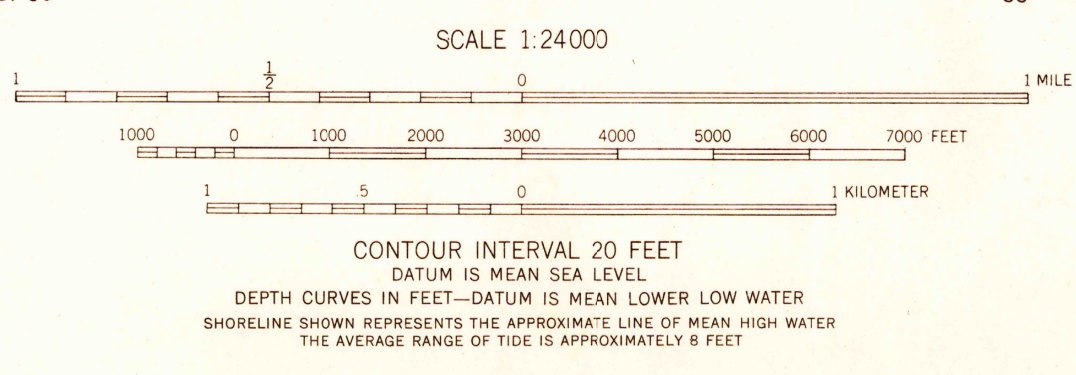
UNITED STATES  
DEPARTMENT OF THE INTERIOR  
GEOLOGICAL SURVEY

HOLLY QUADRANGLE  
WASHINGTON  
7.5 MINUTE SERIES (TOPOGRAPHIC)  
SW 1/4 POINT MISERY 15' QUADRANGLE

U.S.G.S.  
FILE COPY  
TOPOGRAPHIC DIVISION



Maped, edited, and published by the Geological Survey  
Control by USGS and USC&GS, and USCE  
Topography from aerial photographs by Kelsh plotter method  
Aerial photographs taken 1951. Field check 1953  
Hydrography compiled from USC&GS Charts 6450 and 6460  
Polyconic projection. 1927 North American datum  
10,000-foot grids based on Washington coordinate system,  
north and south zones  
Dashed land lines indicate approximate locations  
Unchecked elevations are shown in brown



ROAD CLASSIFICATION  
Heavy-duty 4 LANE 6 LANE Light-duty  
Medium-duty 4 LANE 6 LANE Unimproved dirt  
U. S. Route State Route

HOLLY, WASH.  
SW 1/4 POINT MISERY 15' QUADRANGLE  
N 4730—W 12252.5/7.5

1953

FOR SALE BY U. S. GEOLOGICAL SURVEY, FEDERAL CENTER, DENVER, COLORADO OR WASHINGTON 25, D. C.  
A FOLDER DESCRIBING TOPOGRAPHIC MAPS AND SYMBOLS IS AVAILABLE ON REQUEST

U.S.G.S.  
FILE COPY  
TOPOGRAPHIC DIVISION

MAY 11 1955