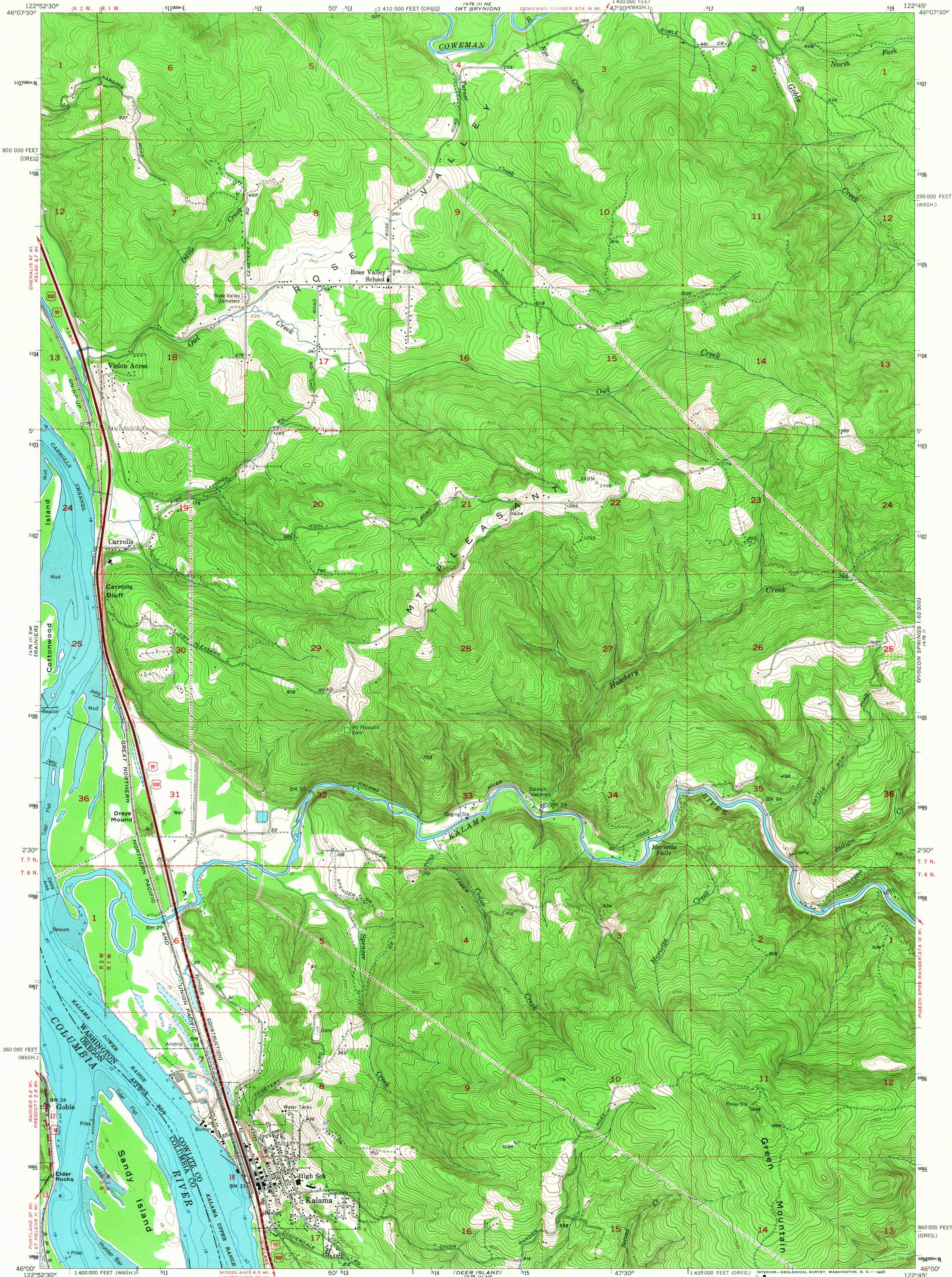


UNITED STATES
DEPARTMENT OF THE INTERIOR
GEOLOGICAL SURVEY

KALAMA QUADRANGLE
WASHINGTON—OREGON
7.5 MINUTE SERIES (TOPOGRAPHIC)
SE/4 KALAMA 15' QUADRANGLE



Mapped, edited, and published by the Geological Survey

Control by USGS, USC&GS, USCE, and State of Oregon

Topography from aerial photographs by Kesh plotter methods
and by plane-table surveys 1930 and 1953. Aerial photographs taken 1951

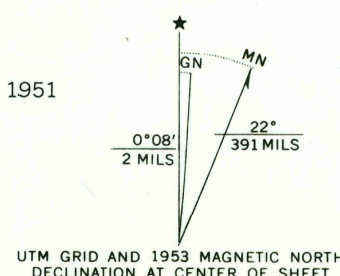
Hydrography compiled from USC&GS Chart 6153

Polyconic projection. 1927 North American datum
10,000-foot grids based on Washington coordinate system, south zone
and Oregon coordinate system, north zone

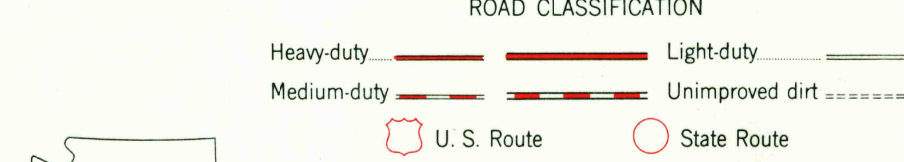
Dashed land lines indicate approximate locations

Unchecked elevations are shown in brown

1000-meter Universal Transverse Mercator grid ticks,
zone 10, shown in blue



THIS MAP COMPLIES WITH NATIONAL MAP ACCURACY STANDARDS
FOR SALE BY U. S. GEOLOGICAL SURVEY, DENVER, COLORADO 80225 OR WASHINGTON, D. C. 20242
A FOLDER DESCRIBING TOPOGRAPHIC MAPS AND SYMBOLS IS AVAILABLE ON REQUEST



KALAMA, WASH.—OREG.
SE/4 KALAMA 15' QUADRANGLE
N 4600—W 12245/7.5

1953

AMS 1476 III SE—SERIES V891

2705
MAR 28 1967