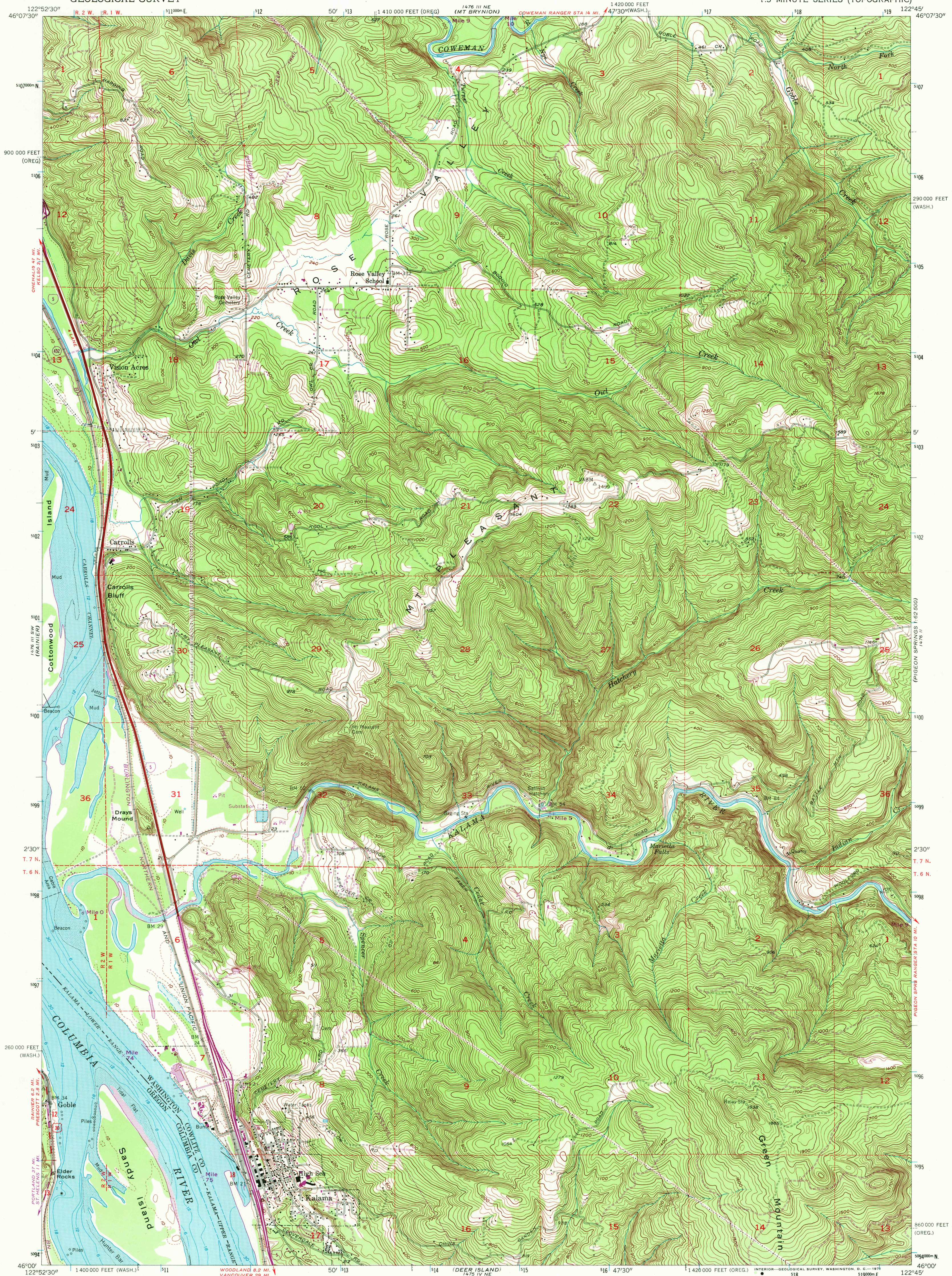


UNITED STATES  
DEPARTMENT OF THE INTERIOR  
GEOLOGICAL SURVEY

KALAMA QUADRANGLE  
WASHINGTON—OREGON  
7.5 MINUTE SERIES (TOPOGRAPHIC)



Mapped, edited, and published by the Geological Survey

Control by USGS, USC&GS, USCE, and State of Oregon

Topography from aerial photographs by Kelsch plotter methods and by plane-table surveys 1930 and 1953. Aerial photographs taken 1951

Hydrography compiled from USC&GS Chart 6153

Polycyclic projection. 1927 North American datum  
10,000-foot grids based on Washington coordinate system, south zone and Oregon coordinate system, north zone

Dashed land lines indicate approximate locations

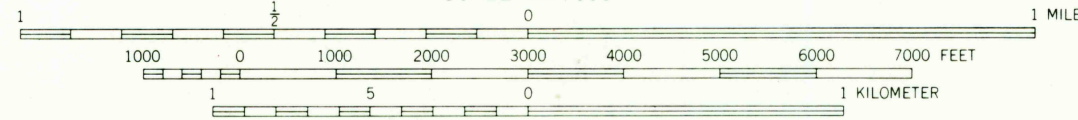
Unchecked elevations are shown in brown

1000-meter Universal Transverse Mercator grid ticks, zone 10, shown in blue

Revisions shown in purple compiled from aerial photographs taken 1970. This information not field checked

THIS MAP COMPLIES WITH NATIONAL MAP ACCURACY STANDARDS  
FOR SALE BY U. S. GEOLOGICAL SURVEY, DENVER, COLORADO 80225 OR WASHINGTON, D. C. 20242  
A FOLDER DESCRIBING TOPOGRAPHIC MAPS AND SYMBOLS IS AVAILABLE ON REQUEST

SCALE 1:24,000



CONTOUR INTERVAL 20 FEET

DASHED LINES REPRESENT HALF INTERVAL CONTOURS

DATUM IS MEAN SEA LEVEL

DEPTH CURVES IN FEET—COLUMBIA RIVER DATUM

SHORELINE SHOWN REPRESENTS THE APPROXIMATE LINE OF MEAN HIGH WATER

THE AVERAGE RANGE OF TIDE IS APPROXIMATELY 5 FEET

ROAD CLASSIFICATION

- Heavy-duty ———
- Medium-duty ———
- Light-duty ———
- Unimproved dirt ———
- U. S. Route
- State Route
- Interstate Route

KALAMA, WASH.—OREG.  
N4600—W12245/7.5

1953  
PHOTOREVISED 1970  
AMS 1476 III SE—SERIES V891



NOV 19 1971

U.S. GEOLOGICAL SURVEY  
TOPOGRAPHIC DIVISION