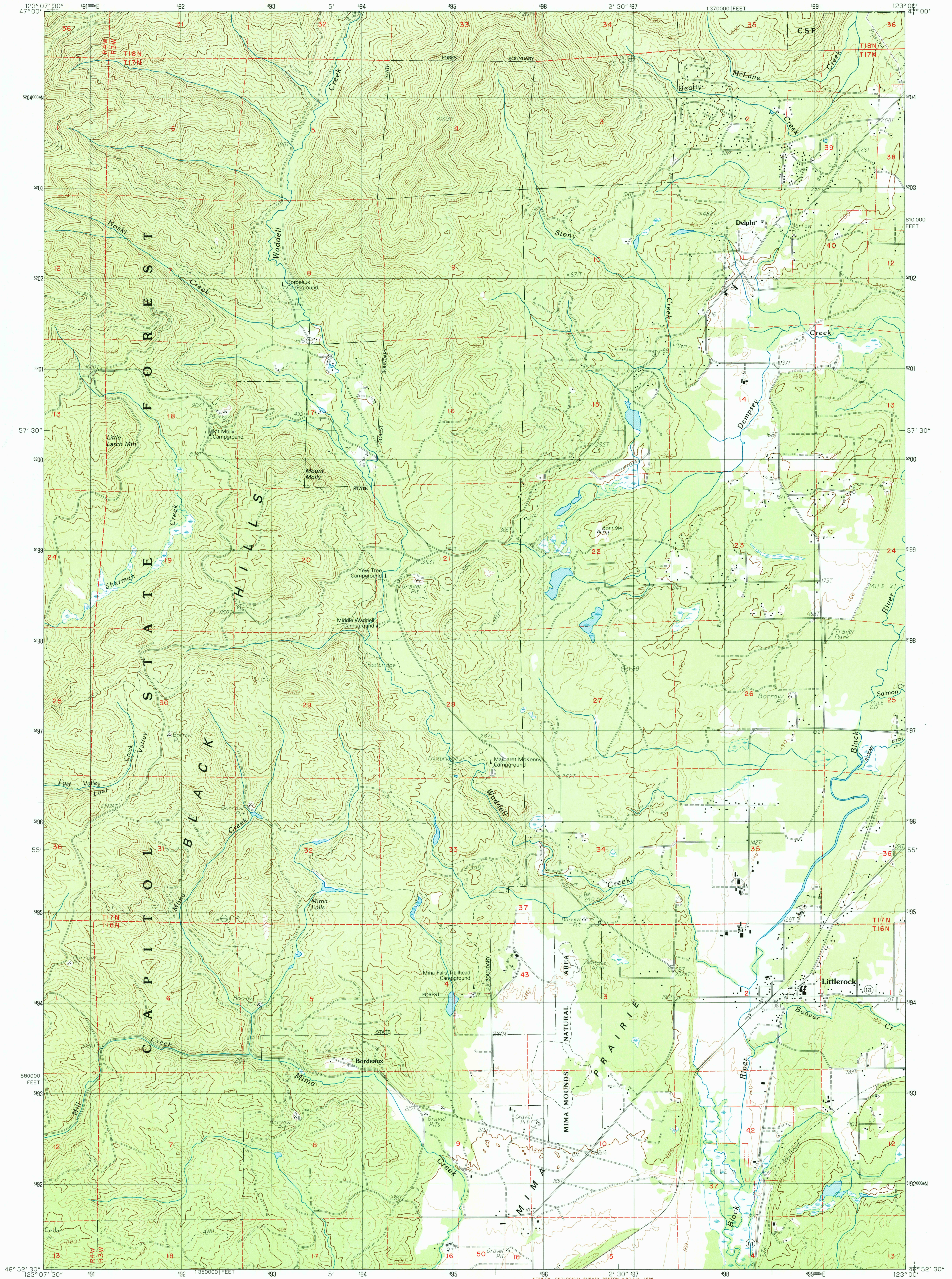


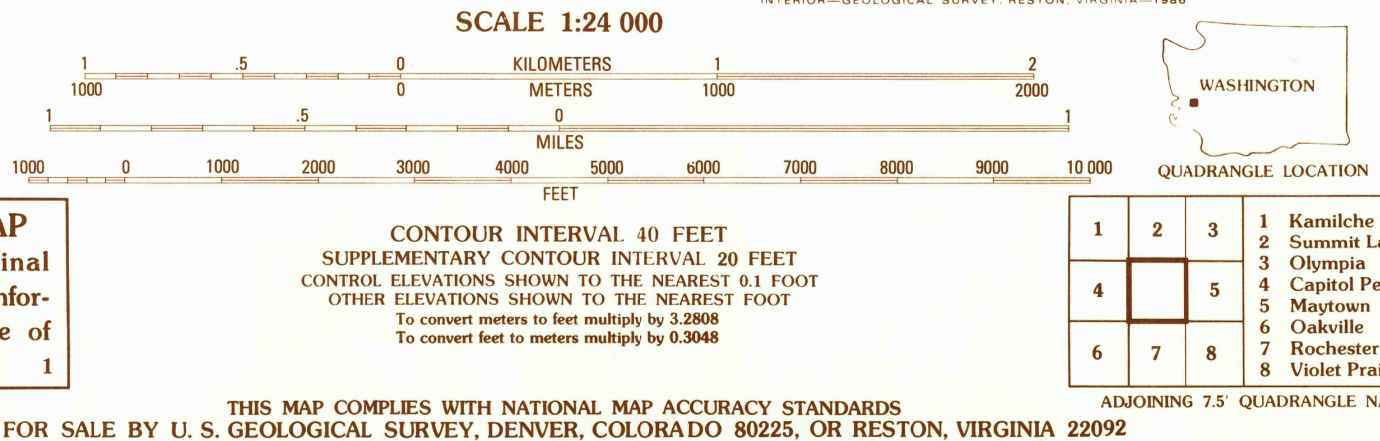
UNITED STATES
DEPARTMENT OF THE INTERIOR
GEOLOGICAL SURVEY

LITTLEROCK QUADRANGLE
WASHINGTON—THURSTON CO.
7.5 MINUTE SERIES (TOPOGRAPHIC)



PRODUCED BY THE UNITED STATES GEOLOGICAL SURVEY
CONTROL BY THE U.S. GEOLOGICAL SURVEY, NGS, NOS/NOAA
COMPILED FROM AERIAL PHOTOGRAPHS TAKEN 1982
FIELD CHECKED 1983. MAP EDITED 1986
PROJECTION LAMBERT CONFORMAL CONIC
GRID: 100-METER UNIVERSAL TRANSVERSE MERCATOR ZONE 10
10,000-FOOT STATE GRID TICKS WASHINGTON, SOUTH ZONE
UTM GRID DECLINATION 003 WEST
1986 MAGNETIC NORTH DECLINATION 30'30 EAST
HORIZONTAL DATUM 1927 NORTH AMERICAN DATUM
To place on the predicted North American Datum of 1983,
move the projection lines as shown by dashed corner ticks
(23 meters north / 95 meters east)
There may be private inholdings within the boundaries of any
Federal and State Reservations shown on this map
No distinction made between houses, barns, and other buildings

PROVISIONAL MAP
Produced from original
manuscript drawings. Infor-
mation shown as of date of
photography.



ROAD LEGEND
Improved Road.....
Unimproved Road.....
Trail.....
Interstate Route.....
U.S. Route.....
State Route.....

LITTLEROCK, WASH.
PROVISIONAL EDITION 1986

USGS NMD HISTORICAL MAP
JUL 29 1986
REC'D FILE COPY