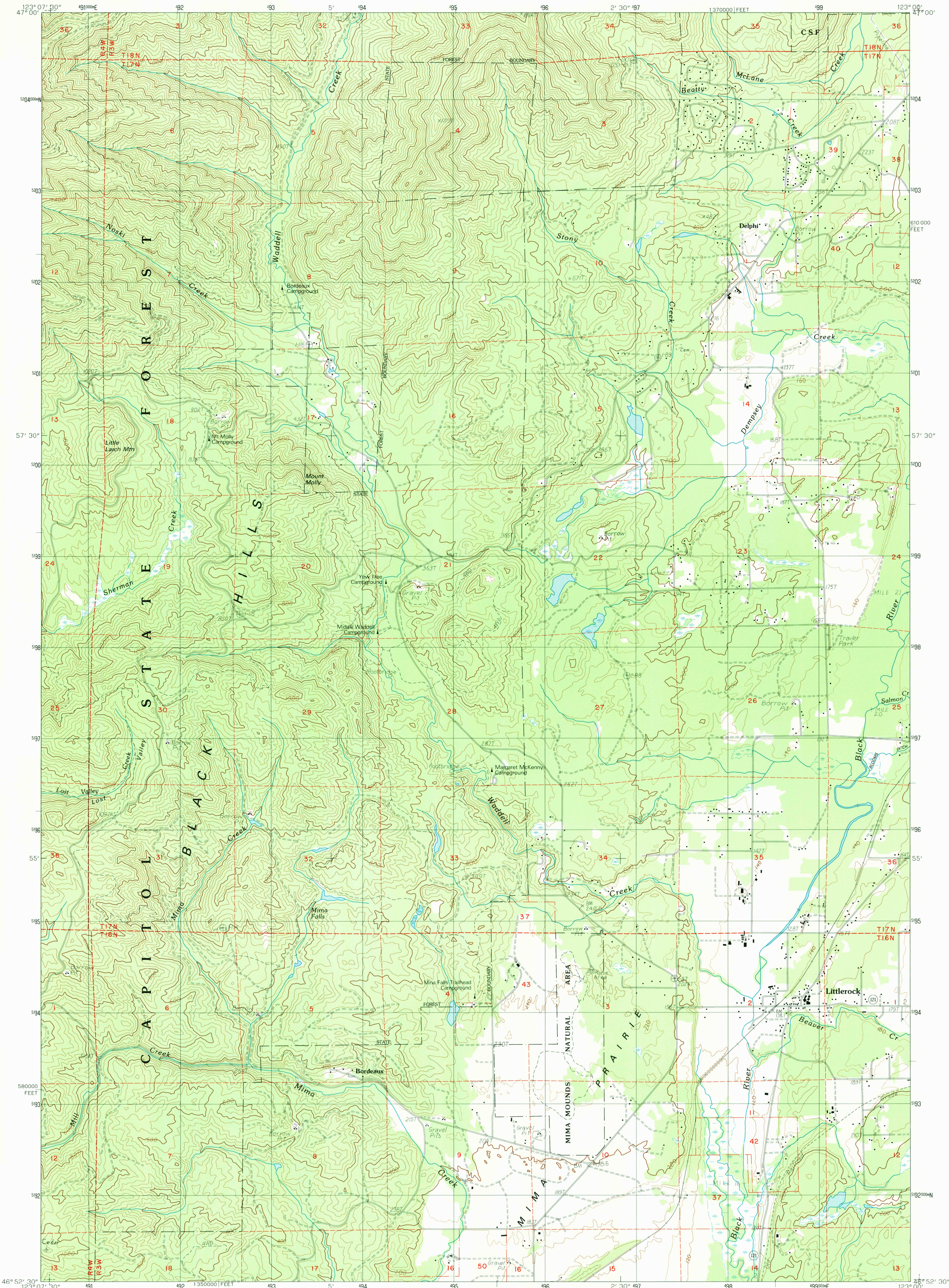


UNITED STATES
DEPARTMENT OF THE INTERIOR
GEOLOGICAL SURVEY

LITTLEROCK QUADRANGLE
WASHINGTON - THURSTON CO.
7.5 MINUTE SERIES (TOPOGRAPHIC)



PRODUCED BY THE UNITED STATES GEOLOGICAL SURVEY
CONTROL BY USGS, NOS/NOAA
COMPILED FROM AERIAL PHOTOGRAPHS TAKEN 1982
FIELD CHECKED 1983. MAP EDITED 1986
PROJECTION LAMBERT CONFORMAL CONIC
GRID: 1000-METER UNIVERSAL TRANSVERSE MERCATOR ZONE 10
10 000-FOOT STATE GRID TICKS WASHINGTON, SOUTH ZONE
UTM GRID DECLINATION 1902 WEST
1993 MAGNETIC NORTH DECLINATION 19° 30' EAST
VERTICAL DATUM NATIONAL GEODETIC VERTICAL DATUM OF 1929
HORIZONTAL DATUM 1927 NORTH AMERICAN DATUM (NAD 27)
The difference between NAD 27 and North American Datum of 1983
(NAD 83) for 7.5 minute intersections is given in USGS Bulletin
1875. The NAD 83 is shown by dashed corner ticks
There may be private inholdings within the boundaries of any Federal
and State reservations shown on this map
No distinction made between houses, barns, and other buildings
Photorevised from 1991 source; no major culture or drainage
changes observed. Boundaries and names verified 1993

PROVISIONAL MAP
Produced from original
manuscript drawings. Infor-
mation shown as of date of
photography.

CONTOUR INTERVAL 40 FEET
SUPPLEMENTARY CONTOUR INTERVAL 20 FEET
CONTROL ELEVATIONS SHOWN TO THE NEAREST 0.1 FOOT
OTHER ELEVATIONS SHOWN TO THE NEAREST FOOT
To convert meters to feet multiply by 3.2808
To convert feet to meters multiply by 0.3048

THIS MAP COMPLIES WITH NATIONAL MAP ACCURACY STANDARDS
FOR SALE BY U. S. GEOLOGICAL SURVEY, DENVER, COLORADO 80225, OR RESTON, VIRGINIA 22092

1	2	3	1 Kamliche Valley
4	5	2 Summit Lake	3 Tumwater
6	7	4 Capitol Peak	5 Maytown
		6 Oakville	7 Rochester
		8 Violet Prairie	

ROAD LEGEND
Improved Road.....
Unimproved Road.....
Trail.....
Interstate Route.....
U.S. Route.....
State Route.....

LITTLEROCK, WASH.
PROVISIONAL EDITION 1986

46123-H1-TF-024
MINOR REVISION 1993

