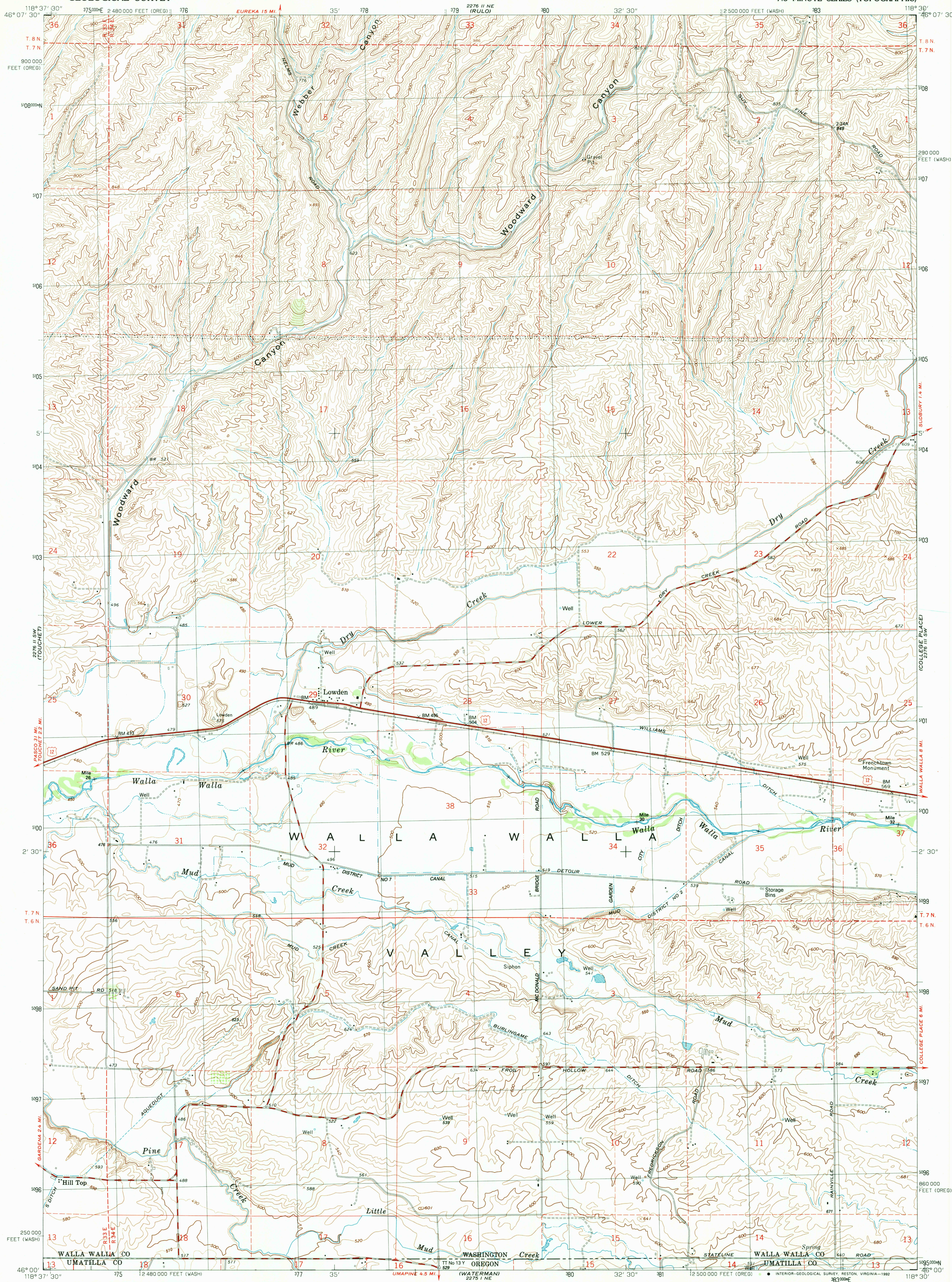
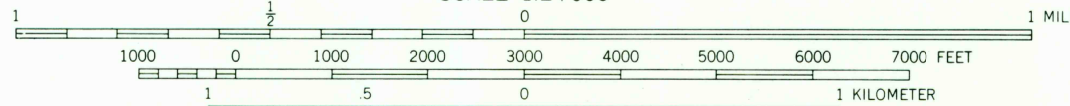
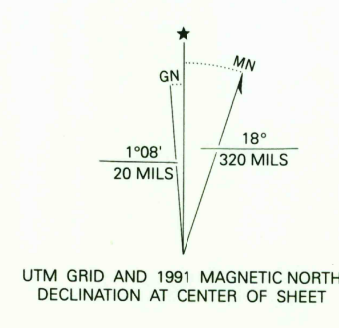


UNITED STATES
DEPARTMENT OF THE INTERIOR
GEOLOGICAL SURVEY

LOWDEN QUADRANGLE
WASHINGTON-OREGON
7.5 MINUTE SERIES (TOPOGRAPHIC)



Produced by the United States Geological Survey
Control by USGS and NOS/NOAA
Compiled from aerial photographs taken 1964. Revised from aerial
photographs taken 1988. Field checked 1990. Map edited 1991
North American Datum of 1927 (NAD 27). Projection and
10 000-foot grid ticks: Washington Coordinate System, south zone
(Lambert Conformal Conic) and Oregon Coordinate System,
north zone. 1000-meter Universal Transverse Mercator grid,
zone 11
The difference between NAD 27 and North American Datum of
1983 (NAD 83) for 7.5 minute intersections is given in USGS
Bulletin 1875. The NAD 83 is shown by dashed corner ticks
Fine red lines indicate selected fence lines



CONTOUR INTERVAL 20 FEET
SUPPLEMENTARY CONTOUR INTERVAL 10 FEET
NATIONAL GEODETIC VERTICAL DATUM OF 1929

THIS MAP COMPLIES WITH NATIONAL MAP ACCURACY STANDARDS
FOR SALE BY U.S. GEOLOGICAL SURVEY
DENVER, COLORADO 80225, OR RESTON, VIRGINIA 22092
A FOLDER DESCRIBING TOPOGRAPHIC MAPS AND SYMBOLS IS AVAILABLE ON REQUEST



ROAD CLASSIFICATION
Heavy-duty ——— Light-duty ———
Medium-duty ——— Unimproved dirt ———
U.S. Route

LOWDEN, WASH.-OREG.
46118-A5-TF-024

1991

DMA 2276 II SE-SERIES V891

