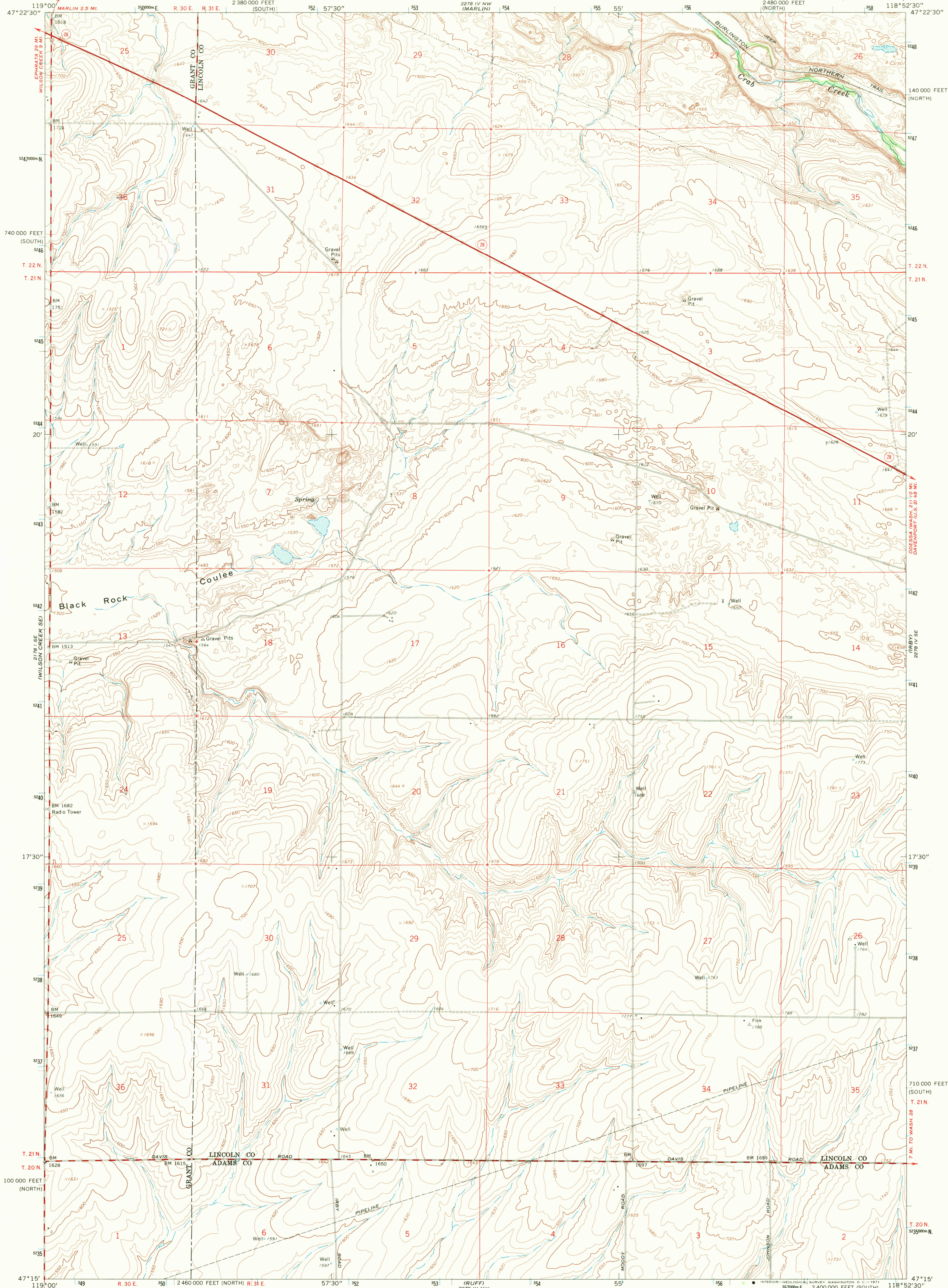


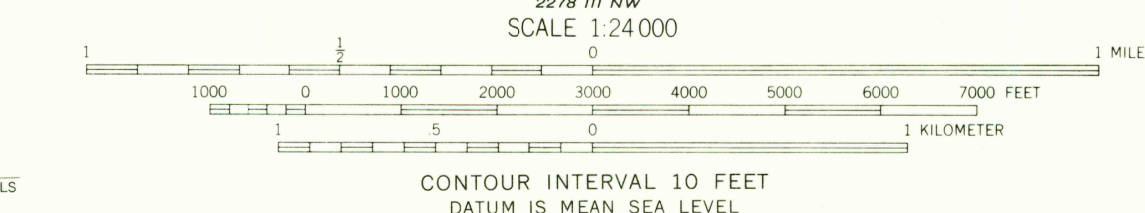
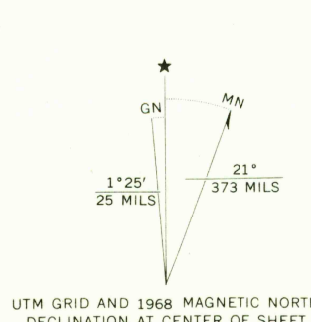
UNITED STATES
DEPARTMENT OF THE INTERIOR
GEOLOGICAL SURVEY

STATE OF WASHINGTON
DEPARTMENT OF NATURAL RESOURCES

MARLIN SW QUADRANGLE
WASHINGTON
7.5 MINUTE SERIES (TOPOGRAPHIC)



Maped, edited, and published by the Geological Survey
Control by USGS and USCGS
Topography by photogrammetric methods from aerial
photographs taken 1967. Field checked 1968
Polyconic projection. 1927 North American datum
10,000-foot grids based on Washington coordinate system,
north and south zones
1000-meter Universal Transverse Mercator grid ticks,
zone 11, shown in blue
Fine red dashed lines indicate selected fence lines



ROAD CLASSIFICATION
Heavy-duty ——— Light-duty ———
Medium-duty ——— Unimproved dirt ———
State Route —○—

USGS
Historical File
Topographic Division

MARLIN SW, WASH.
N4715—W11852.5/7.5

1968

AMS 2278 IV SW—SERIES V891

2110
AUG 13 1971
USGS
HISTORICAL FILE
TOPOGRAPHIC DIVISION