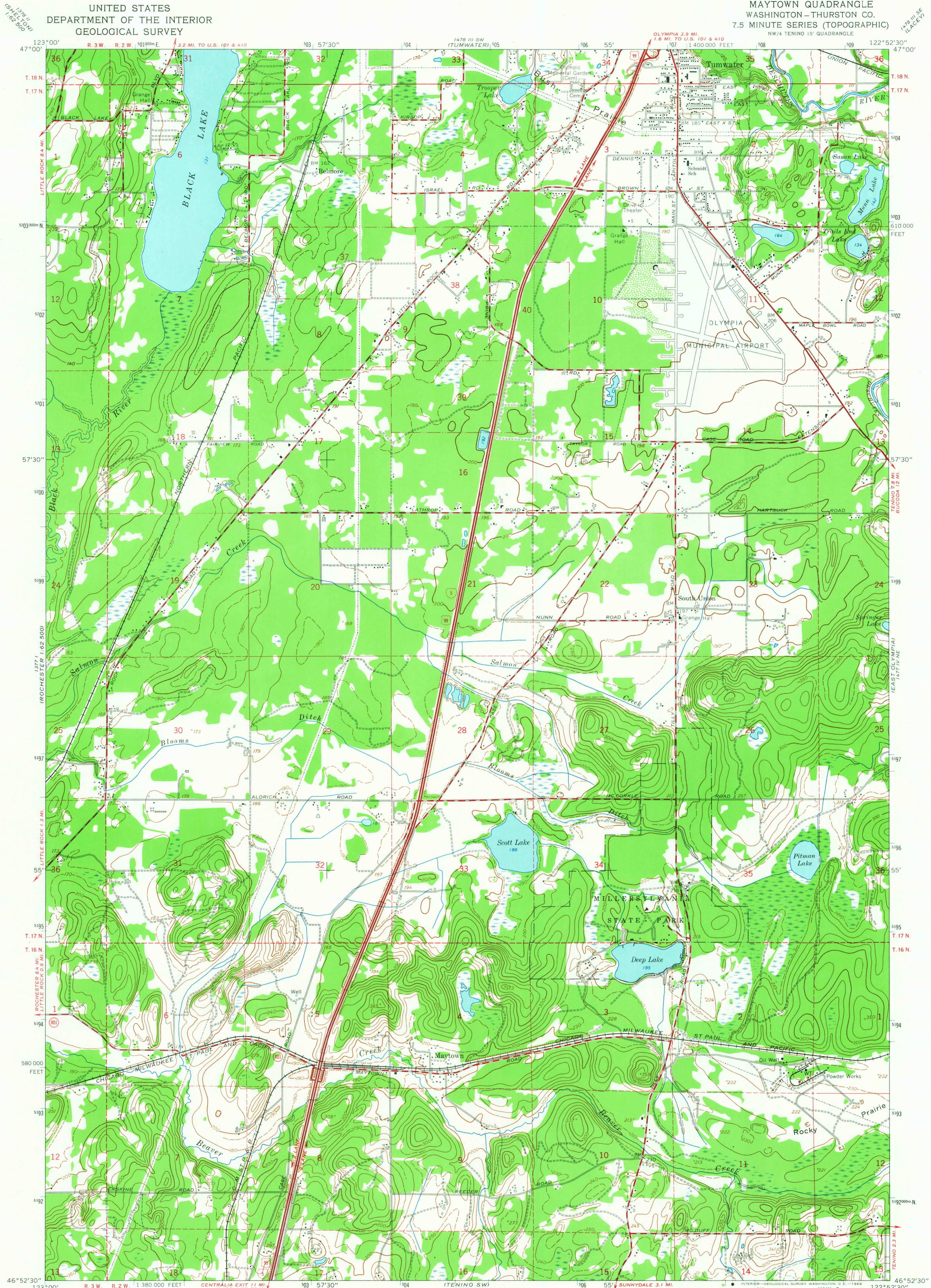


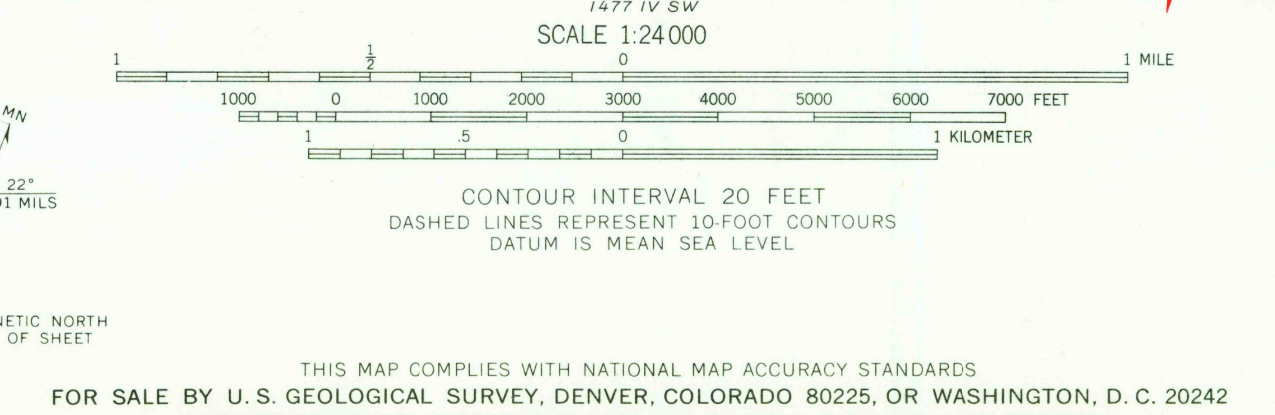
UNITED STATES  
DEPARTMENT OF THE INTERIOR  
GEOLOGICAL SURVEY

MAYTOWN QUADRANGLE  
WASHINGTON—THURSTON CO.  
7.5 MINUTE SERIES (TOPOGRAPHIC)  
NW/4 TENINO 15' QUADRANGLE



13771  
162500  
13771  
162500

Map by the Army Map Service  
Published for civil use by the Geological Survey  
Control by USGS, USC&GS, and USCE  
Topography by photogrammetric methods from aerial  
photographs taken 1957. Field checked 1959  
Polyconic projection. 1927 North American datum  
10,000-foot grid based on Washington coordinate system,  
south zone  
1000-meter Universal Transverse Mercator grid ticks,  
zone 10, shown in blue  
Land lines added and minor corrections by USGS 1965



ROAD CLASSIFICATION  
Heavy-duty ——— Light-duty ———  
Medium-duty ——— Unimproved dirt ———  
Interstate Route U.S. Route State Route

USGS  
Historical File  
Topographic Division

MAYTOWN, WASH.  
NW/4 TENINO 15' QUADRANGLE  
N4652.5—W12252.5/7.5  
1959

AMS 1477 IV NW—SERIES B981

3190  
AUG 12 1956  
U.S.G.S.  
FILE COPY  
TOPOGRAPHIC DIVISION