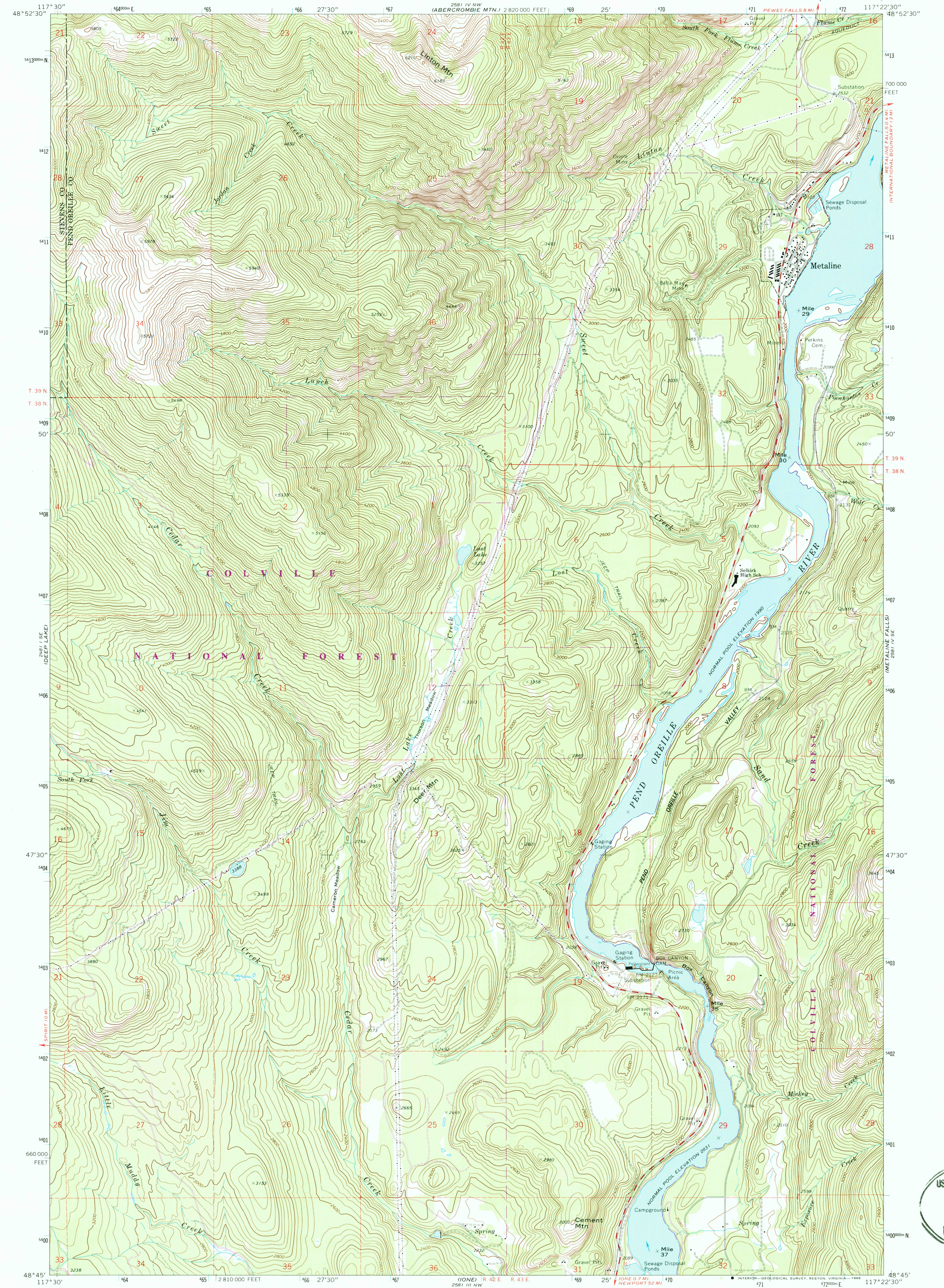


2581 IV NW
(LEADPOKE)

UNITED STATES
DEPARTMENT OF THE INTERIOR
GEOLOGICAL SURVEY

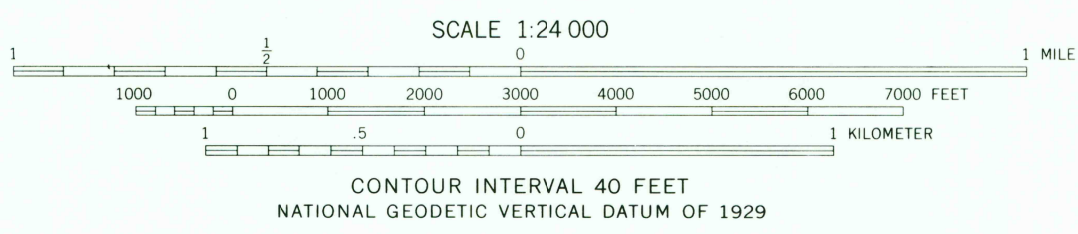
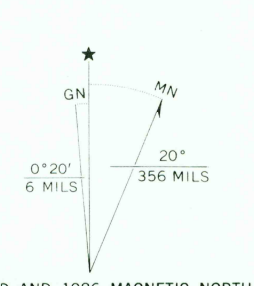
METALINE QUADRANGLE
WASHINGTON
7.5 MINUTE SERIES (TOPOGRAPHIC)

2581 IV SE
(BOUNDARY DAM)



2581 IV NE
(ALADDIN MTN.)

Mapped, edited, and published by the Geological Survey
Control by USGS and NOS/NOAA
Topography by photogrammetric methods from aerial photographs taken 1966. Field checked 1967
Polyconic projection. 1927 North American Datum
10,000-foot grid based on Washington coordinate system, north zone
1000-meter Universal Transverse Mercator grid ticks, zone 11, shown in blue
To place on the predicted North American Datum 1983 move the projection lines 14 meters north and 79 meters east as shown by dashed corner ticks
There may be private inholdings within the boundaries of the National or State reservations shown on this map



THIS MAP COMPLIES WITH NATIONAL MAP ACCURACY STANDARDS
FOR SALE BY U. S. GEOLOGICAL SURVEY
DENVER, COLORADO 80225, OR RESTON, VIRGINIA 22092
A FOLDER DESCRIBING TOPOGRAPHIC MAPS AND SYMBOLS IS AVAILABLE ON REQUEST



Revisions shown in purple compiled from aerial photographs taken 1983 and other source data. Partial field check by U. S. Forest Service. Map edited 1986



METALINE, WASH.
48117-G4-TF-024

1967
PHOTOREVISED 1986
DMA 2581 IV SW-SERIES V891

