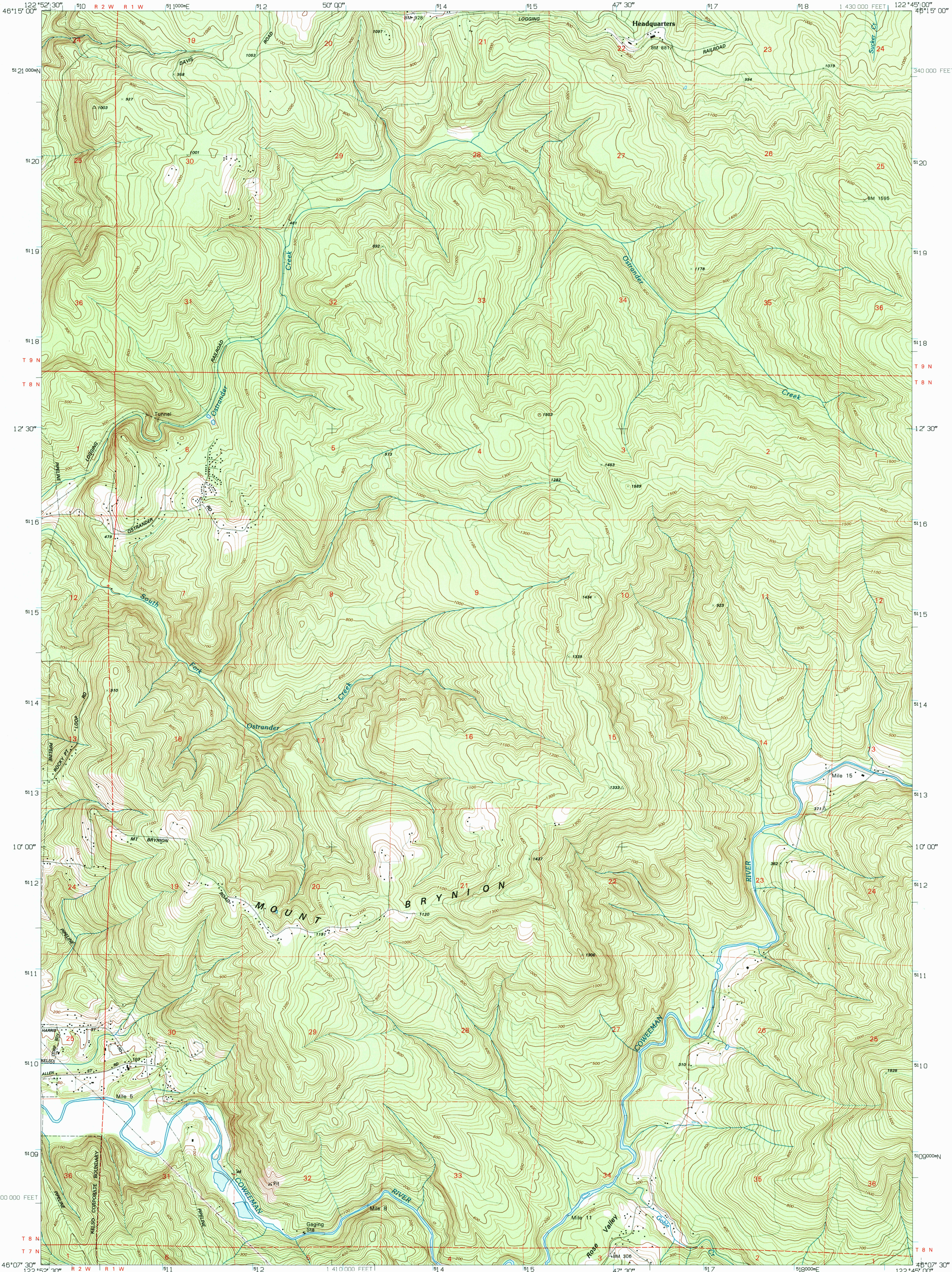


UNITED STATES  
DEPARTMENT OF THE INTERIOR  
GEOLOGICAL SURVEY

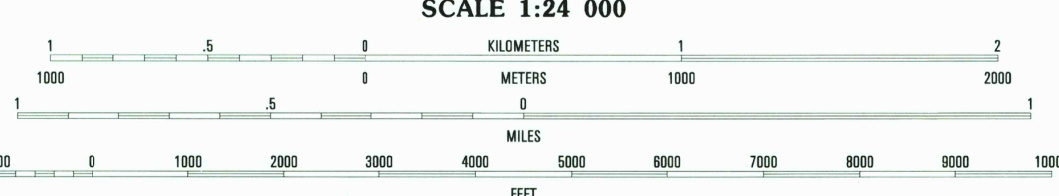
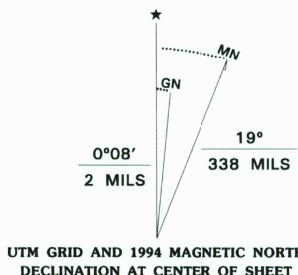
MOUNT BRYNION QUADRANGLE  
WASHINGTON-COWLITZ CO.  
7.5-MINUTE SERIES (TOPOGRAPHIC)



Produced by the United States Geological Survey  
Control by USGS, NOS/NOAA and USCE

Compiled from imagery dated 1951. Revised from imagery  
dated 1950. PLUS and survey control current as of 1953  
Map edited 1994. Contours and land elevations have not  
been revised and may conflict with other content

North American Datum of 1927 (NAD 27). Projection and  
blue 1000-meter ticks: Universal Transverse Mercator, zone 10  
10 000-foot ticks: Washington Coordinate System, south zone  
North American Datum of 1983 (NAD 83) is shown by dashed  
corner ticks. The values of the shift between NAD 27  
and NAD 83 for 7.5-minute intersections are obtainable from  
National Geodetic Survey NADCON software



CONTOUR INTERVAL 20 FEET  
NATIONAL GEODETIC VERTICAL DATUM OF 1929  
TO CONVERT FEET TO METERS MULTIPLY BY 0.3048  
TO CONVERT METERS TO FEET MULTIPLY BY 3.2808

THIS MAP COMPLIES WITH NATIONAL MAP ACCURACY STANDARDS  
FOR SALE BY U.S. GEOLOGICAL SURVEY  
DENVER, COLORADO 80225, OR RESTON, VIRGINIA 22092  
A FOLDER DESCRIBING TOPOGRAPHIC MAPS AND SYMBOLS IS AVAILABLE ON REQUEST



ROAD CLASSIFICATION  
Primary highway  
hard surface .....  
Secondary highway  
hard surface .....  
Unimproved road .....  
Interstate Route  
U.S. Route  
State Route

1	2	3
4	5	6
7	8	

1 Castle Rock  
2 Silver Lake  
3 Toutle  
4 Kelso  
5 Hemlock Pass  
6 Rainier  
7 Kalama  
8 Woolford Creek

MOUNT BRYNION, WA  
46122-B7-TF-024  
1990

DMA 1476 III NE-SERIES V891

