

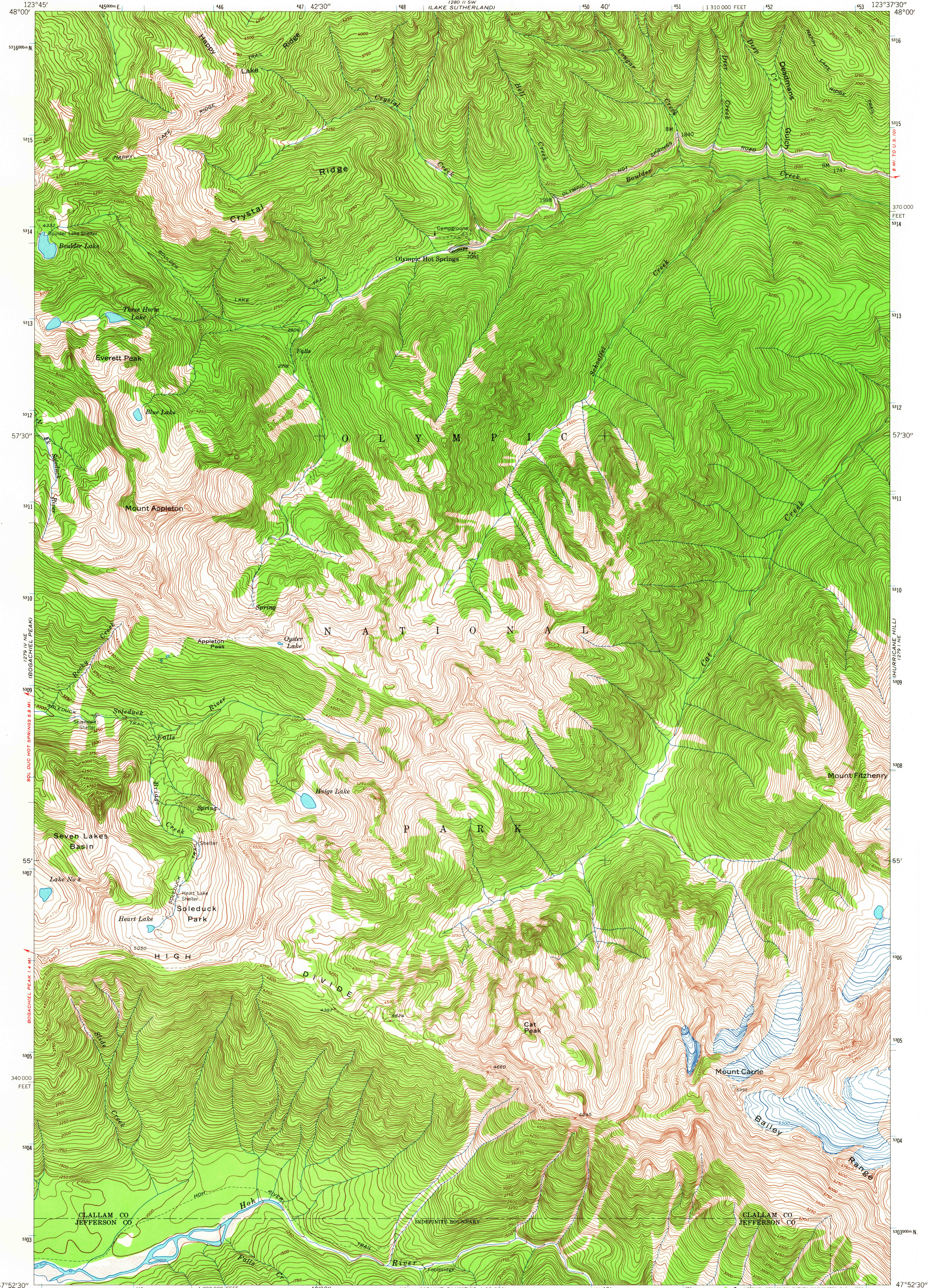
1280 II SE  
(LAKE CRECENT)

UNITED STATES  
DEPARTMENT OF THE INTERIOR  
GEOLOGICAL SURVEY

UNITED STATES  
DEPARTMENT OF THE ARMY  
CORPS OF ENGINEERS

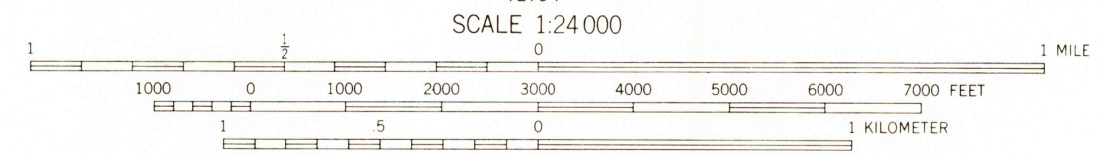
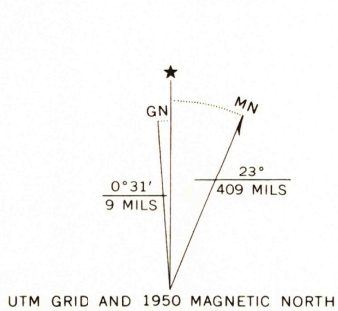
MOUNT CARRIE QUADRANGLE  
WASHINGTON  
7.5 MINUTE SERIES (TOPOGRAPHIC)  
NW/4 MOUNT OLYMPUS 15' QUADRANGLE

1280 I SE  
(EL WPAI)



1279 I SE  
(MOUNT OLYMPUS 15' QUADRANGLE)

Map by the Army Map Service  
Published for civil use by the Geological Survey  
Control by USGS, USC&GS, and USCE  
Topography by photogrammetric methods from aerial  
photographs taken 1943. Field checked 1950  
Polyconic projection. 1927 North American datum  
10,000-foot grid based on Washington coordinate system,  
north zone  
1000-meter Universal Transverse Mercator grid ticks,  
zone 10, shown in blue  
Land lines have not been established in this area



CONTOUR INTERVAL 50 FEET  
DATUM IS MEAN SEA LEVEL

THIS MAP COMPLIES WITH NATIONAL MAP ACCURACY STANDARDS  
FOR SALE BY U.S. GEOLOGICAL SURVEY, DENVER, COLORADO 80225, OR WASHINGTON, D.C. 20242  
A FOLDER DESCRIBING TOPOGRAPHIC MAPS AND SYMBOLS IS AVAILABLE ON REQUEST



ROAD CLASSIFICATION  
Heavy-duty 4 LANE 16 LANE Light-duty  
Medium-duty 4 LANE 16 LANE Unimproved dirt  
U.S. Route State Route

MOUNT CARRIE, WASH.  
NW/4 MOUNT OLYMPUS 15' QUADRANGLE  
N4752.5-W12337.5/7.5

USGS  
Historical File  
Topographic Division  
1950  
MINOR CORRECTIONS MADE 1965  
AMS 1279 I NW-SERIES V891

U.S.G.S.  
TOPOGRAPHIC DIVISION

JUN 21 1966