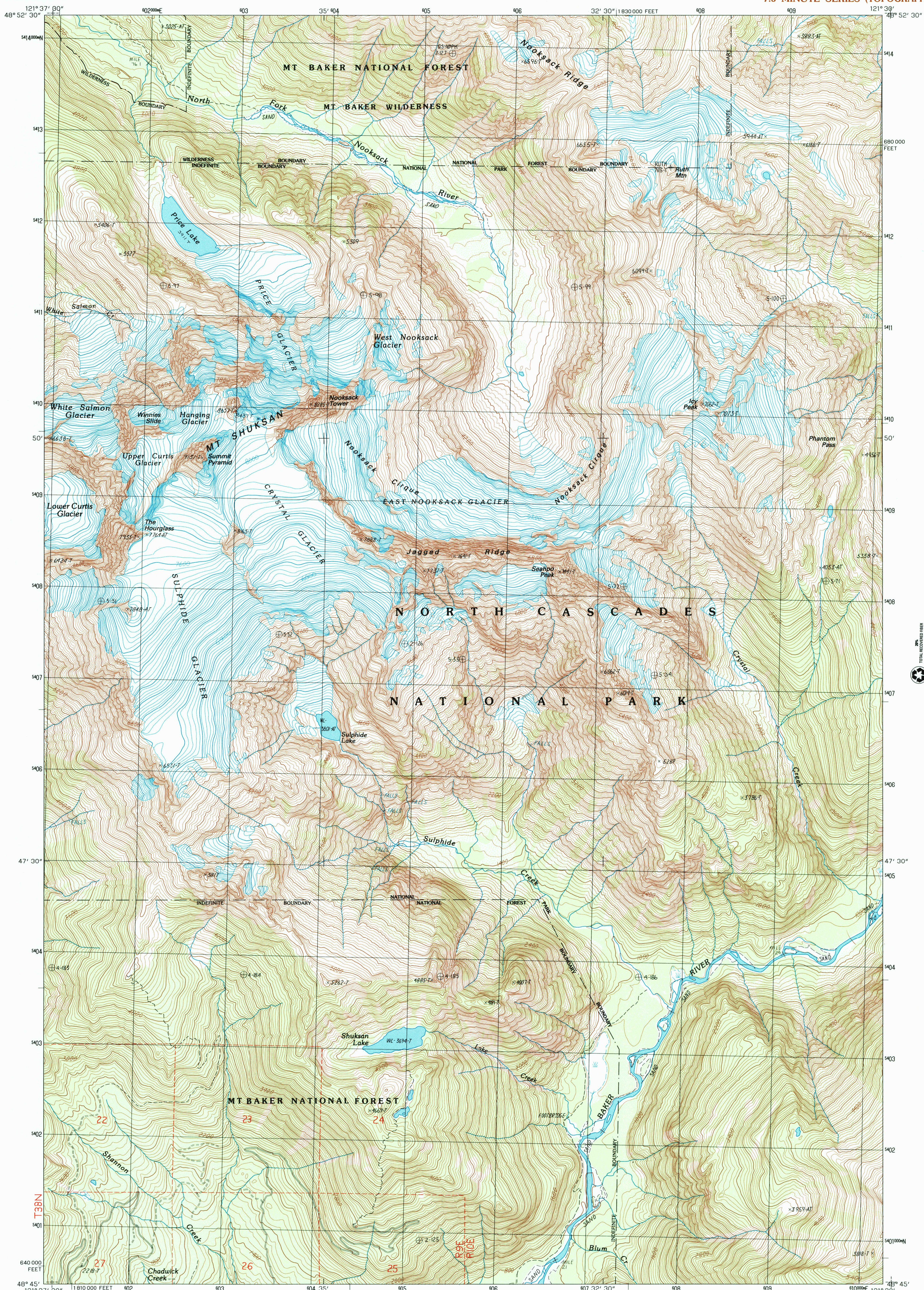




U.S. DEPARTMENT OF THE INTERIOR
U.S. GEOLOGICAL SURVEY

MOUNT SHUKSAN QUADRANGLE
WASHINGTON - WHATCOM CO.
7.5 MINUTE SERIES (TOPOGRAPHIC)



PRODUCED BY THE UNITED STATES GEOLOGICAL SURVEY
CONTROL BY COMPILED FROM AERIAL PHOTOGRAPHS TAKEN
FIELD CHECKED 1986. MAP EDITED 1989
PROJECTION LAMBERT CONFORMAL CONIC
GRID: 1000-METER UNIVERSAL TRANSVERSE MERCATOR ZONE 10
10,000-FOOT STATE GRID TICKS WASHINGTON, NORTH ZONE
UTM GRID DECLINATION 1905' EAST
1989 MAGNETIC NORTH DECLINATION 20'30' EAST
VERTICAL DATUM NATIONAL GEODETIC VERTICAL DATUM OF 1929
HORIZONTAL DATUM 1927 NORTH AMERICAN DATUM
To place on the predicted North American Datum of 1983,
move the projection lines as shown by dashed corner ticks
(22 meters north and 91 meters east)
There may be private inholdings within the boundaries of any
Federal or State reservations shown on this map
No distinction made between houses, barns, and other buildings
Where omitted, land lines have not been established

PROVISIONAL MAP
Produced from original
manuscript drawings. Infor-
mation shown as of date of
photography.

SCALE 1:24 000
KILOMETERS
METERS
MILES
FOOT
CONTOUR INTERVAL 40 FEET
To convert feet to meters multiply by .3048
To convert meters to feet multiply by 3.2808
THIS MAP COMPLIES WITH NATIONAL MAP ACCURACY STANDARDS
FOR SALE BY U.S. GEOLOGICAL SURVEY
P.O. BOX 25286, DENVER, COLORADO 80225
A FOLDER DESCRIBING TOPOGRAPHIC MAPS AND SYMBOLS IS AVAILABLE ON REQUEST

1	2	3	1 Mount Larrabee
4	5	2 Mount Seft	2 Mount Seft
6	7	3 Copper Mountain	3 Copper Mountain
		4 Shuksan Arm	4 Shuksan Arm
		5 Mount Blum	5 Mount Blum
		6 Welker Peak	6 Welker Peak
		7 Bacon Peak	7 Bacon Peak
		8 Damation Peak	8 Damation Peak

ROAD LEGEND
Improved Road
Unimproved Road
Trail
Interstate Route
U. S. Route
State Route

MOUNT SHUKSAN, WASHINGTON
PROVISIONAL EDITION 1989

USGS Library
Reston, VA.
Topo Archive



48121-G5-TF-024