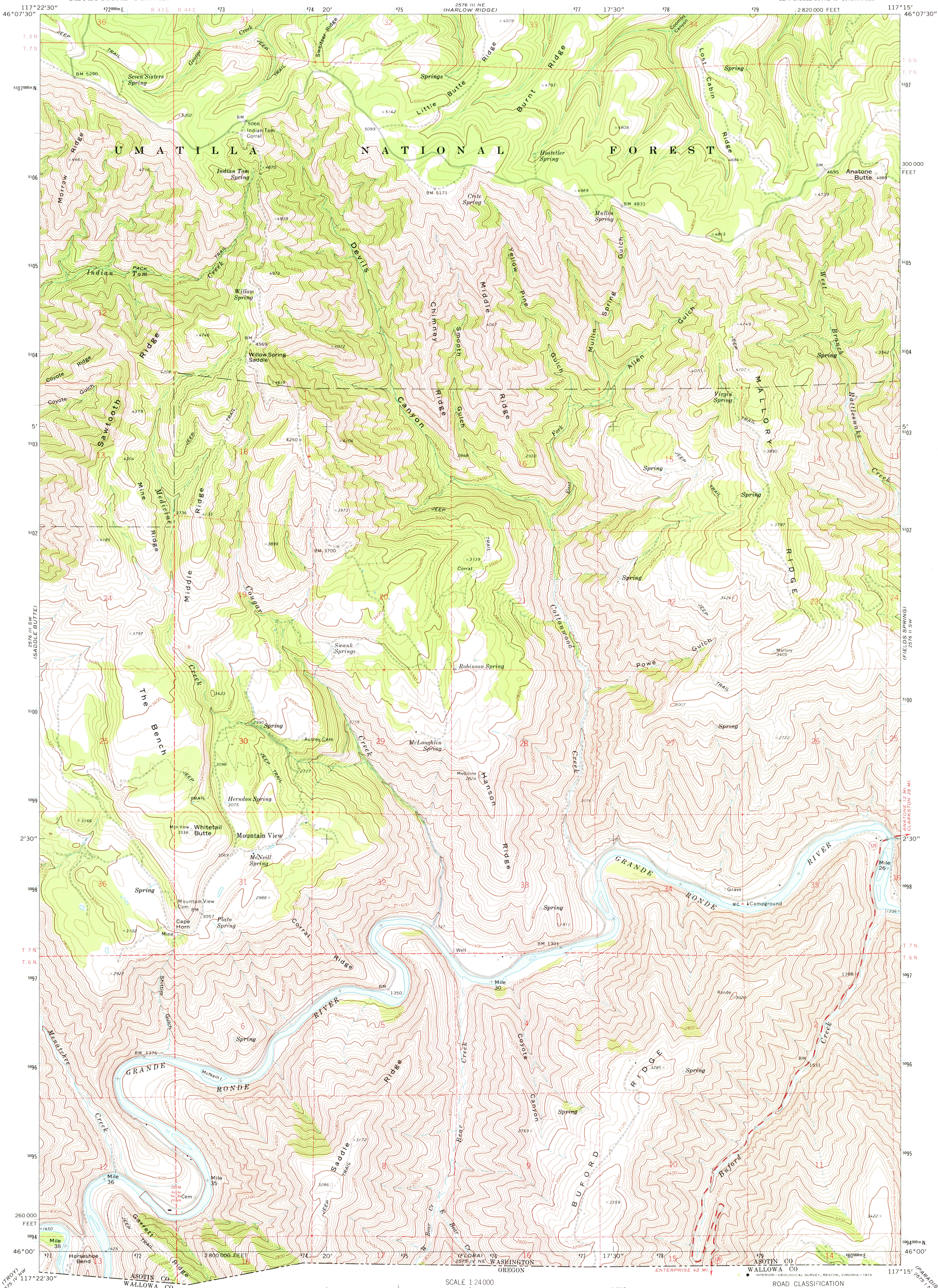
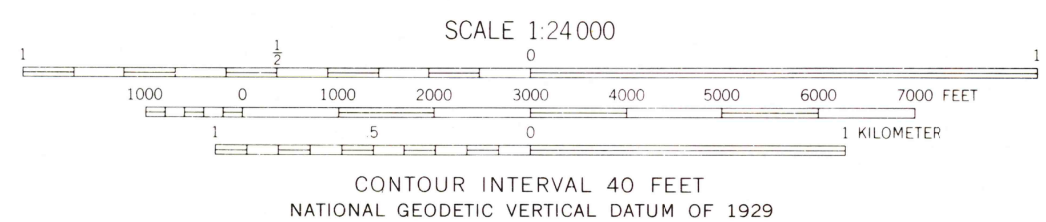


UNITED STATES
DEPARTMENT OF THE INTERIOR
GEOLOGICAL SURVEY

MOUNTAIN VIEW QUADRANGLE
WASHINGTON—ASOTIN CO.
7.5 MINUTE SERIES (TOPOGRAPHIC)
SE/4 SADDLE BUTTE 15' QUADRANGLE



Mapped, edited, and published by the Geological Survey
Control by USGS and USC&GS
Topography by photogrammetric methods from aerial
photographs taken 1970. Field checked 1971
Projection and 10,000-foot grid ticks: Washington coordinate
system, south zone (Lambert conformal conic)
1000-meter Universal Transverse Mercator grid ticks,
zone 11, shown in blue. 1927 North American datum
Fine red dashed lines indicate selected fence lines
Certain land lines are omitted because of insufficient data



ROAD CLASSIFICATION
Primary highway, hard surface
Secondary highway, hard surface
Unimproved road
Light duty road, hard or improved surface
Interstate Route
U. S. Route
State Route



USGS
Historical File
Topographic Division

MOUNTAIN VIEW, WASH.
SE/4 SADDLE BUTTE 15' QUADRANGLE
N4600—W11715/7.5

1971

AMS 2576 III SE—SERIES V891

DEC 0 2 1974