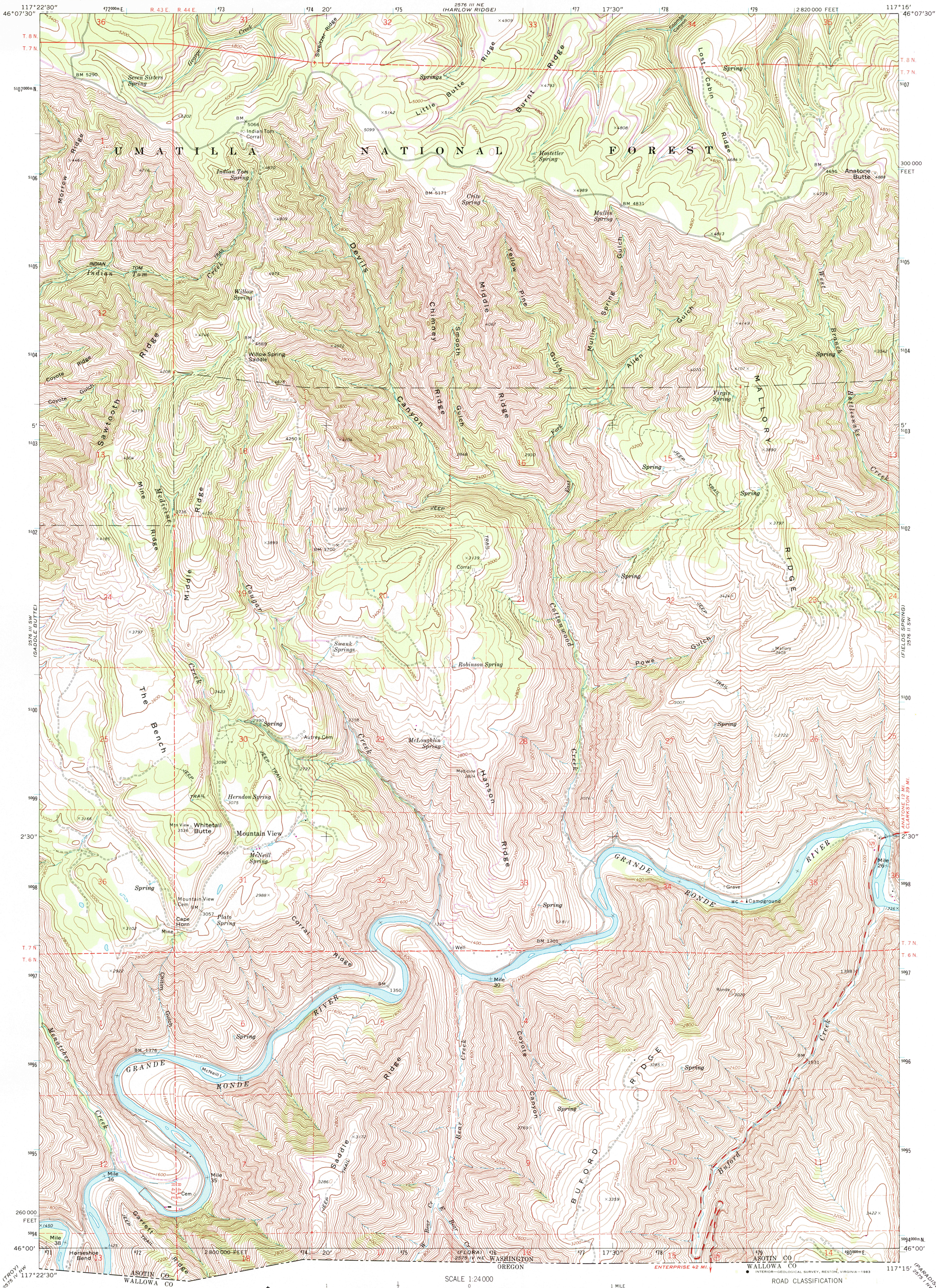
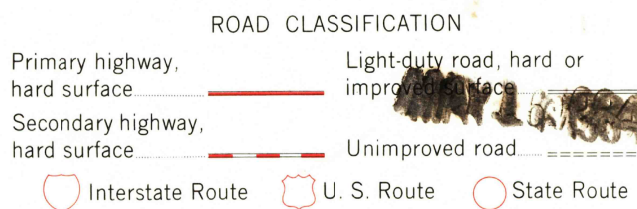
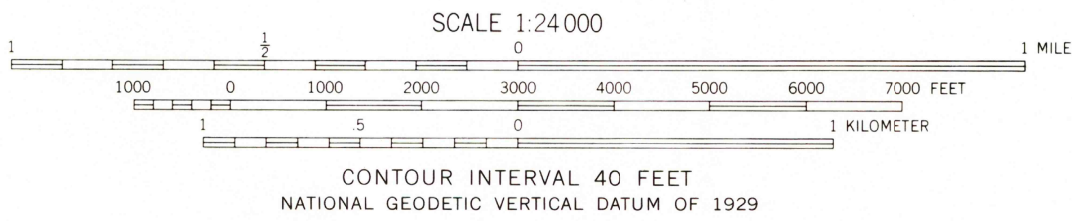
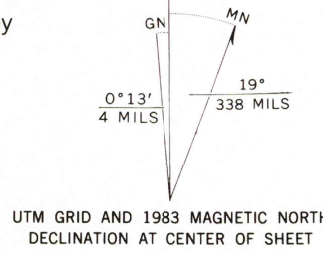


UNITED STATES  
DEPARTMENT OF THE INTERIOR  
GEOLOGICAL SURVEY

MOUNTAIN VIEW QUADRANGLE  
WASHINGTON-ASOTIN CO.  
7.5 MINUTE SERIES (TOPOGRAPHIC)



Mapped, edited, and published by the Geological Survey  
Control by USGS and NOS/NOAA  
Topography by photogrammetric methods from aerial  
photographs taken 1970. Field checked 1971  
Projection and 10,000-foot grid ticks: Washington coordinate  
system, south zone (Lambert conformal conic)  
1000-meter Universal Transverse Mercator grid ticks,  
zone 11, shown in blue. 1927 North American datum  
Fine red dashed lines indicate selected fence lines  
Certain land lines are omitted because of insufficient data  
To place on the predicted North American Datum 1983  
move the projection lines 17 meters north and  
79 meters east as shown by dashed corner ticks  
There may be private inholdings within the boundaries  
of the National or State reservations shown on this map



MOUNTAIN VIEW, WASH.

N4600-W11715/7.5

THIS MAP COMPLIES WITH NATIONAL MAP ACCURACY STANDARDS  
FOR SALE BY U. S. GEOLOGICAL SURVEY, DENVER, COLORADO 80225, OR RESTON, VIRGINIA 22092  
A FOLDER DESCRIBING TOPOGRAPHIC MAPS AND SYMBOLS IS AVAILABLE ON REQUEST

Revisions shown in purple and woodland compiled from  
aerial photographs taken 1981 and other source data  
Partial field check by U. S. Forest Service. Map edited 1983

1971  
PHOTOREVISED 1983  
DMA 2576 III SE-SERIES V891