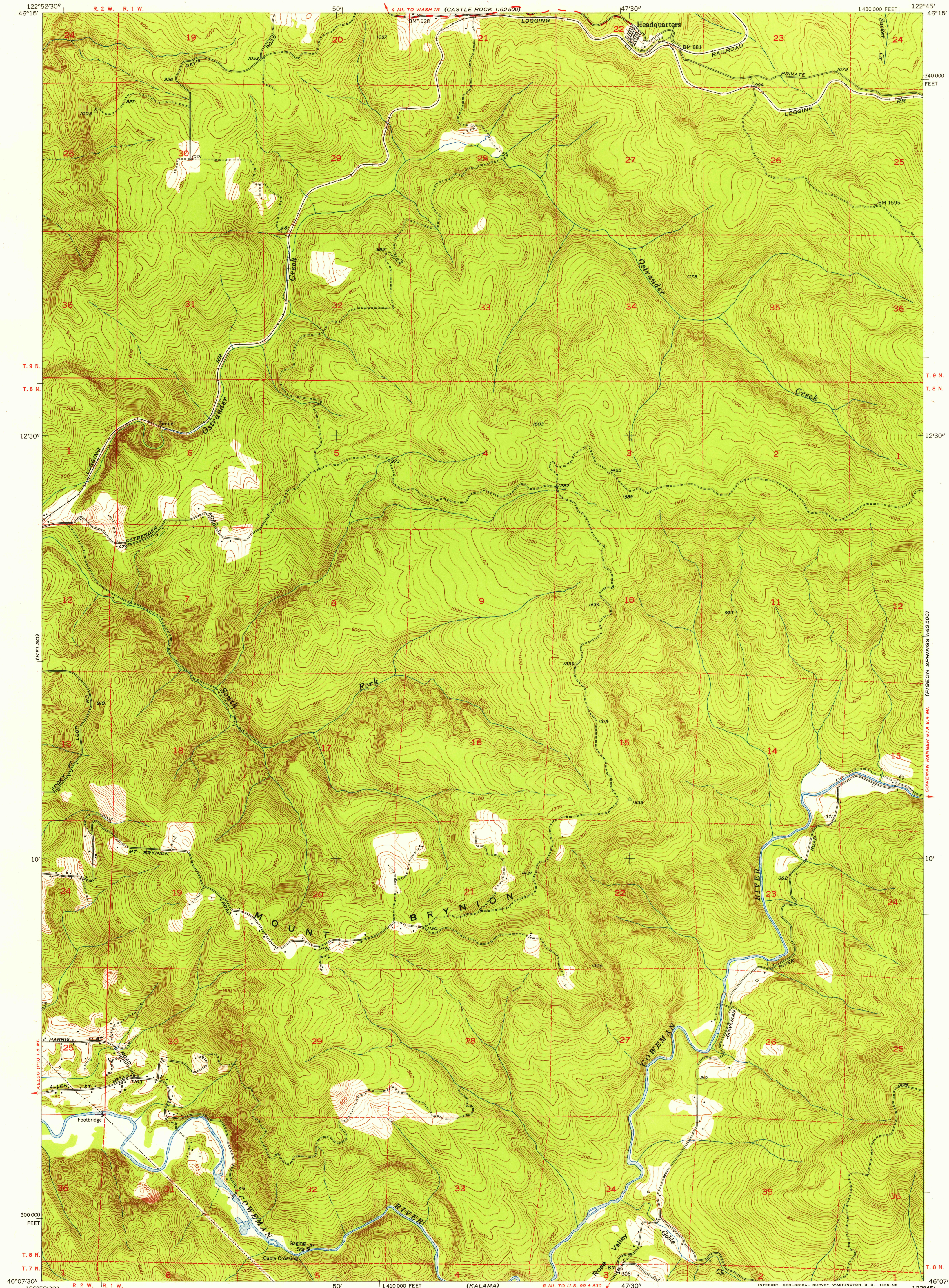


UNITED STATES  
DEPARTMENT OF THE INTERIOR  
GEOLOGICAL SURVEY

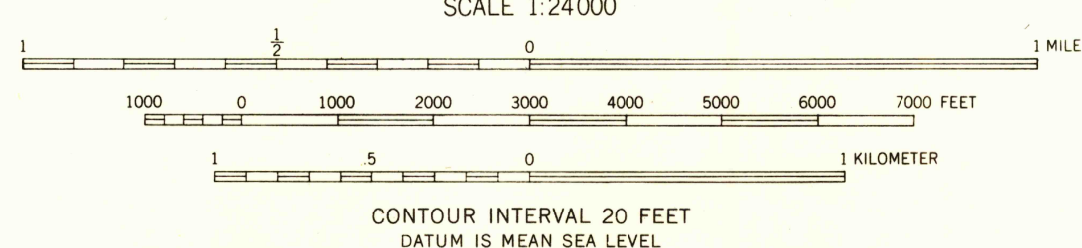
MT. BRYNION QUADRANGLE  
WASHINGTON-COWLITZ CO.  
7.5 MINUTE SERIES (TOPOGRAPHIC)  
NE 1/4 KALAMA 15' QUADRANGLE

U.S.G.S.  
FILE COPY  
TOPOGRAPHIC DIVISION



Mapped, edited, and published by the Geological Survey  
Control by USGS, USC&GS, and USCE  
Topography from aerial photographs by Kelsh plotter methods  
Aerial photographs taken 1951. Field check 1953  
Polyconic projection. 1927 North American datum  
10,000-foot grid based on Washington coordinate system, south zone  
Dashed land lines indicate approximate locations

TRUE NORTH  
MAGNETIC NORTH  
APPROXIMATE MEAN  
DECLINATION, 1953



ROAD CLASSIFICATION  
Heavy-duty ——— + LANE 16 LANE Light-duty ———  
Medium-duty ——— + LANE 16 LANE Unimproved dirt =====  
U. S. Route (red line with shield) State Route (red line with circle)

USGS  
Historical File  
Topographic Division

MT. BRYNION, WASH.  
NE 1/4 KALAMA 15' QUADRANGLE  
N 4607.5—W 12245/7.5

1953

FOR SALE BY U. S. GEOLOGICAL SURVEY, FEDERAL CENTER, DENVER, COLORADO OR WASHINGTON 25, D. C.  
A FOLDER DESCRIBING TOPOGRAPHIC MAPS AND SYMBOLS IS AVAILABLE ON REQUEST

JUN 16 1955