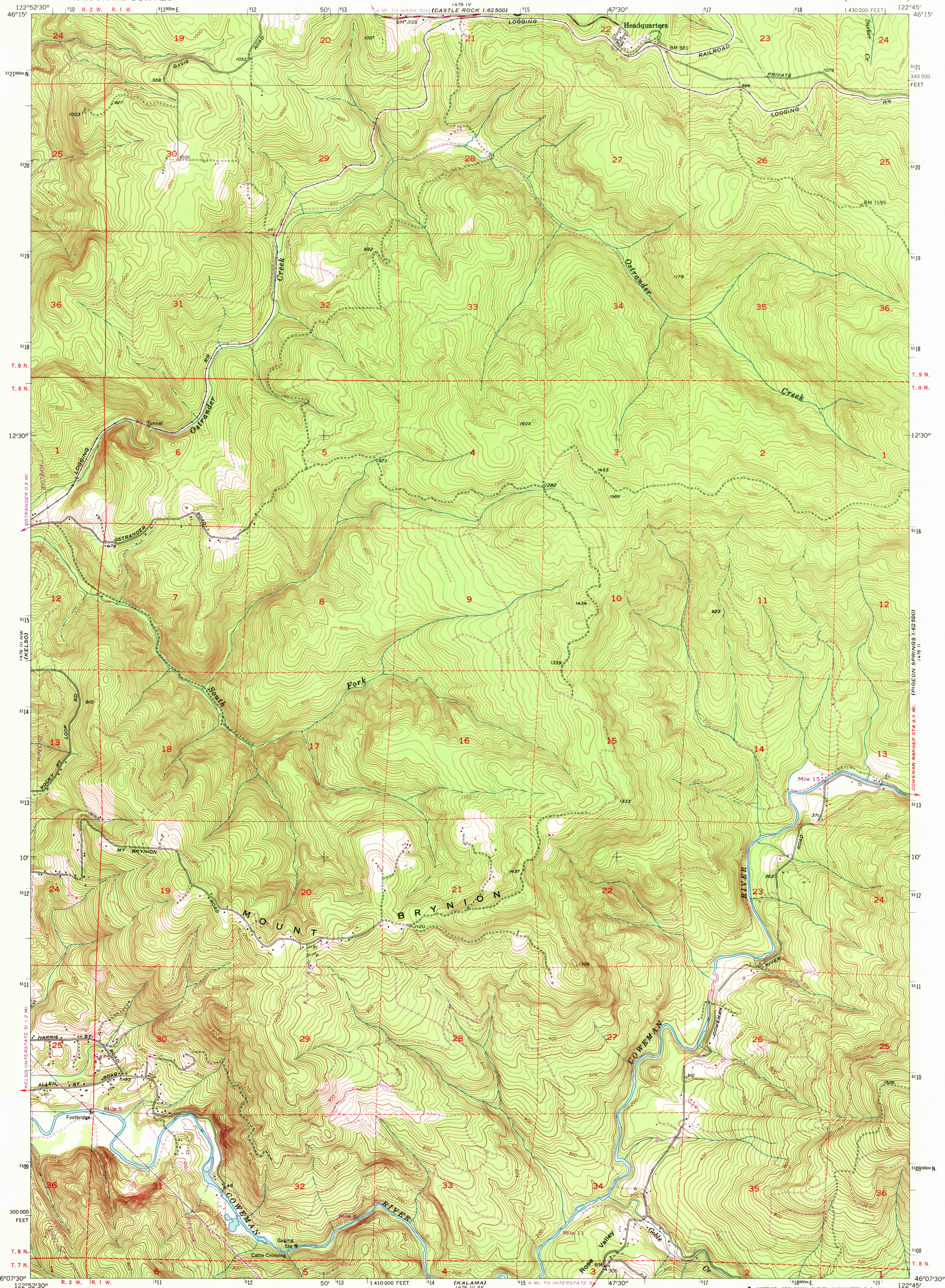


UNITED STATES  
DEPARTMENT OF THE INTERIOR  
GEOLOGICAL SURVEY

MT. BRYNION QUADRANGLE  
WASHINGTON—COWLITZ CO.  
7.5 MINUTE SERIES (TOPOGRAPHIC)



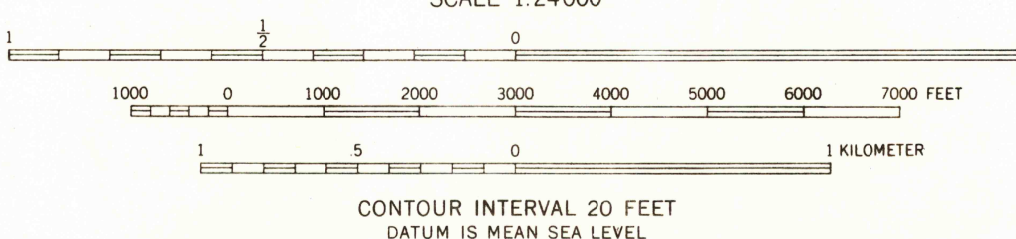
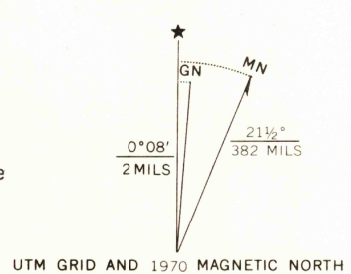
Mapped, edited, and published by the Geological Survey

Control by USGS, USC&GS, and USCE

Topography from aerial photographs by Kelsh plotter methods  
Aerial photographs taken 1951. Field check 1953

Polycyclic projection. 1927 North American datum  
10,000-foot grid based on Washington coordinate system, south zone  
1000-meter Universal Transverse Mercator grid ticks,  
zone 10, shown in blue

Revisions shown in purple compiled from aerial photographs  
taken 1970. This information not field checked



ROAD CLASSIFICATION	
Heavy-duty	Light-duty
Medium-duty	Unimproved dirt
U. S. Route	State Route

USGS  
HISTORICAL FILE  
TOPOGRAPHIC DIVISION

MT. BRYNION, WASH.  
N4607.5—W12245.7.5

1953  
PHOTOGRAPHED 1970  
AMS 1476 III NE—SERIES V891

FOR SALE BY U. S. GEOLOGICAL SURVEY, DENVER, COLORADO 80225, OR WASHINGTON, D. C. 20242  
A FOLDER DESCRIBING TOPOGRAPHIC MAPS AND SYMBOLS IS AVAILABLE ON REQUEST

OCT 7 1971