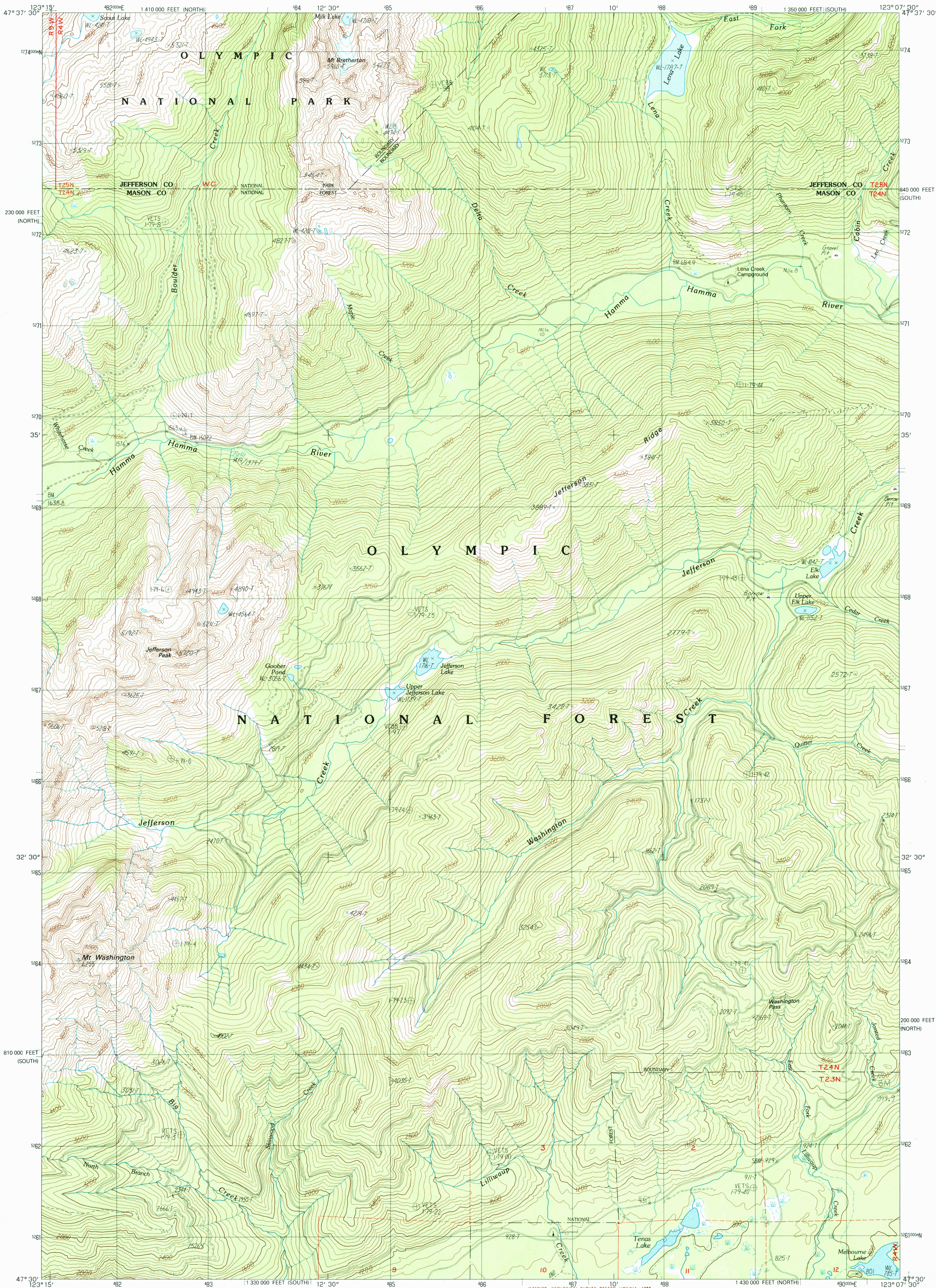


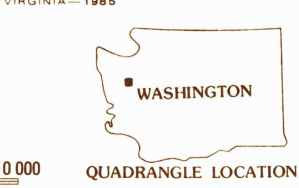
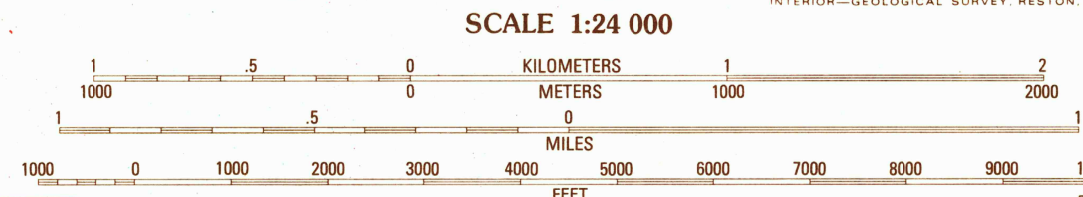
UNITED STATES
DEPARTMENT OF THE INTERIOR
GEOLOGICAL SURVEY

MT. WASHINGTON QUADRANGLE
WASHINGTON
7.5 MINUTE SERIES (TOPOGRAPHIC)



PRODUCED BY THE UNITED STATES GEOLOGICAL SURVEY
CONTROL BY USGS, NOS/NOAA
COMPILED FROM AERIAL PHOTOGRAPHS TAKEN 1968 AND 1979
FIELD CHECKED 1980. MAP EDITED 1985
PROJECTION LAMBERT CONFORMAL CONIC
GRID: 1000-METER UNIVERSAL TRANSVERSE MERCATOR, ZONE 10
10,000-FOOT STATE GRID TICKS, WASH. SOUTH/NORTH ZONES
UTM GRID DECLINATION 0°08' WEST
1980 MAGNETIC NORTH DECLINATION 21° EAST
VERTICAL DATUM: NATIONAL GEODETIC VERTICAL DATUM OF 1929
HORIZONTAL DATUM: 1967 NORTH AMERICAN DATUM
To place on the predicted North American Datum of 1983,
move the projection lines as shown by dashed corner ticks
(24 meters north / 95 meters east)
There may be private inholdings within the boundaries of any
Federal and State Reservations shown on this map
Where omitted, land lines have not been established
or are not shown because of insufficient data

PROVISIONAL MAP
Produced from original
manuscript drawings. Infor-
mation shown as of date of
field check.



1	2	3	1	Mt. Steel
2	3	4	2	The Brothers
3	4	5	3	Mt. Jupiter
4	5	6	4	Mt. Skokomish
5	6	7	5	Eldon
6	7	8	6	Lightning Peak
7	8	9	7	Hoodport
8	9	10	8	Lillooet

ROAD LEGEND
Improved Road.....
Unimproved Road.....
Trail.....
Interstate Route.....
U.S. Route.....
State Route.....

MT. WASHINGTON, WASH.
PROVISIONAL EDITION 1985

THIS MAP COMPLIES WITH NATIONAL MAP ACCURACY STANDARDS
FOR SALE BY U. S. GEOLOGICAL SURVEY, DENVER, COLORADO 80225, OR RESTON, VIRGINIA 22092