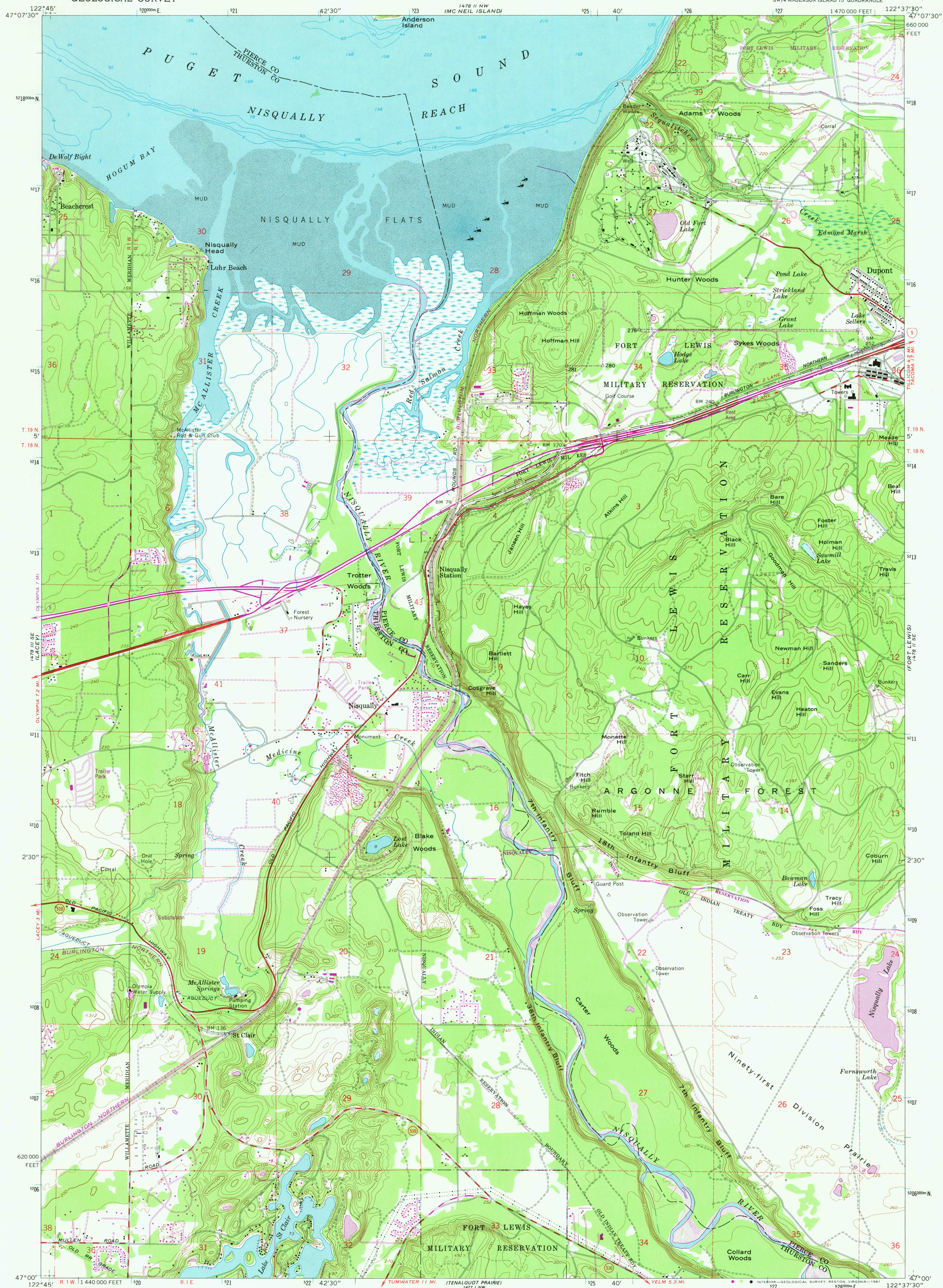


UNITED STATES  
DEPARTMENT OF THE INTERIOR  
GEOLOGICAL SURVEY

NISQUALLY QUADRANGLE  
WASHINGTON  
7.5 MINUTE SERIES (TOPOGRAPHIC)  
SW/4 ANDERSON ISLAND 15' QUADRANGLE



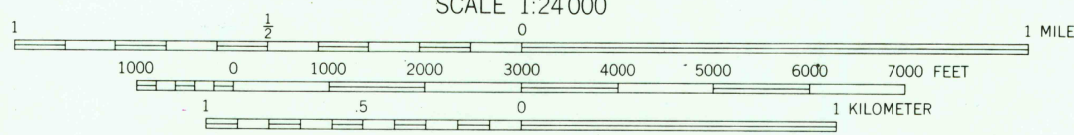
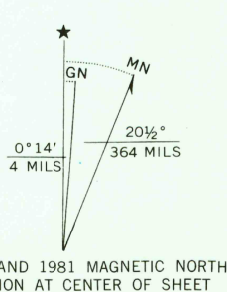
Maped by the Defense Mapping Agency  
Published for civil use by the Geological Survey  
Control by USGS, NOS/NOAA, and USCE

Topography by photogrammetric methods from aerial  
photographs taken 1947. Field checked 1948. Revised  
from aerial photographs taken 1957. Field checked 1959

Selected hydrographic data compiled from NOS  
hydrographic surveys (1935). This information is not  
intended for navigational purposes

Polyconic projection. 10,000-foot grid ticks based on  
Washington coordinate system, south zone. 1000-meter  
Universal Transverse Mercator grid ticks, zone 10, shown  
in blue. 1927 North American Datum. To place on the  
predicted North American Datum 1983 move the  
projection lines 23 meters north and 94 meters  
east as shown by dashed corner ticks

There may be private inholdings within the boundaries of the  
National or State reservations shown on this map



CONTOUR INTERVAL 20 FEET  
NATIONAL GEODETIC VERTICAL DATUM OF 1929  
DEPTH CURVES AND SOUNDINGS IN FEET—DATUM IS MEAN LOWER LOW WATER  
THE RELATIONSHIP BETWEEN THE TWO DATUMS IS VARIABLE  
SHORELINE SHOWN REPRESENTS THE APPROXIMATE LINE OF MEAN HIGH WATER  
THE MEAN RANGE OF TIDE IS APPROXIMATELY 10 FEET

THIS MAP COMPLIES WITH NATIONAL MAP ACCURACY STANDARDS  
FOR SALE BY U. S. GEOLOGICAL SURVEY, DENVER, COLORADO 80225, OR RESTON, VIRGINIA 22092  
A FOLDER DESCRIBING TOPOGRAPHIC MAPS AND SYMBOLS IS AVAILABLE ON REQUEST



ROAD CLASSIFICATION  
Heavy-duty ——— Light-duty ———  
Medium-duty ——— Unimproved dirt ———  
Interstate Route ——— State Route ———

NISQUALLY, WASH.  
SW/4 ANDERSON ISLAND 15' QUADRANGLE  
N4700—W12237.5/7.5

1959  
PHOTOREVISED 1981  
DMA 1478 II SW—SERIES V891

RETURN TO:  
USGS AND HISTORICAL MAP ARCHIVES

NOV 12 1981