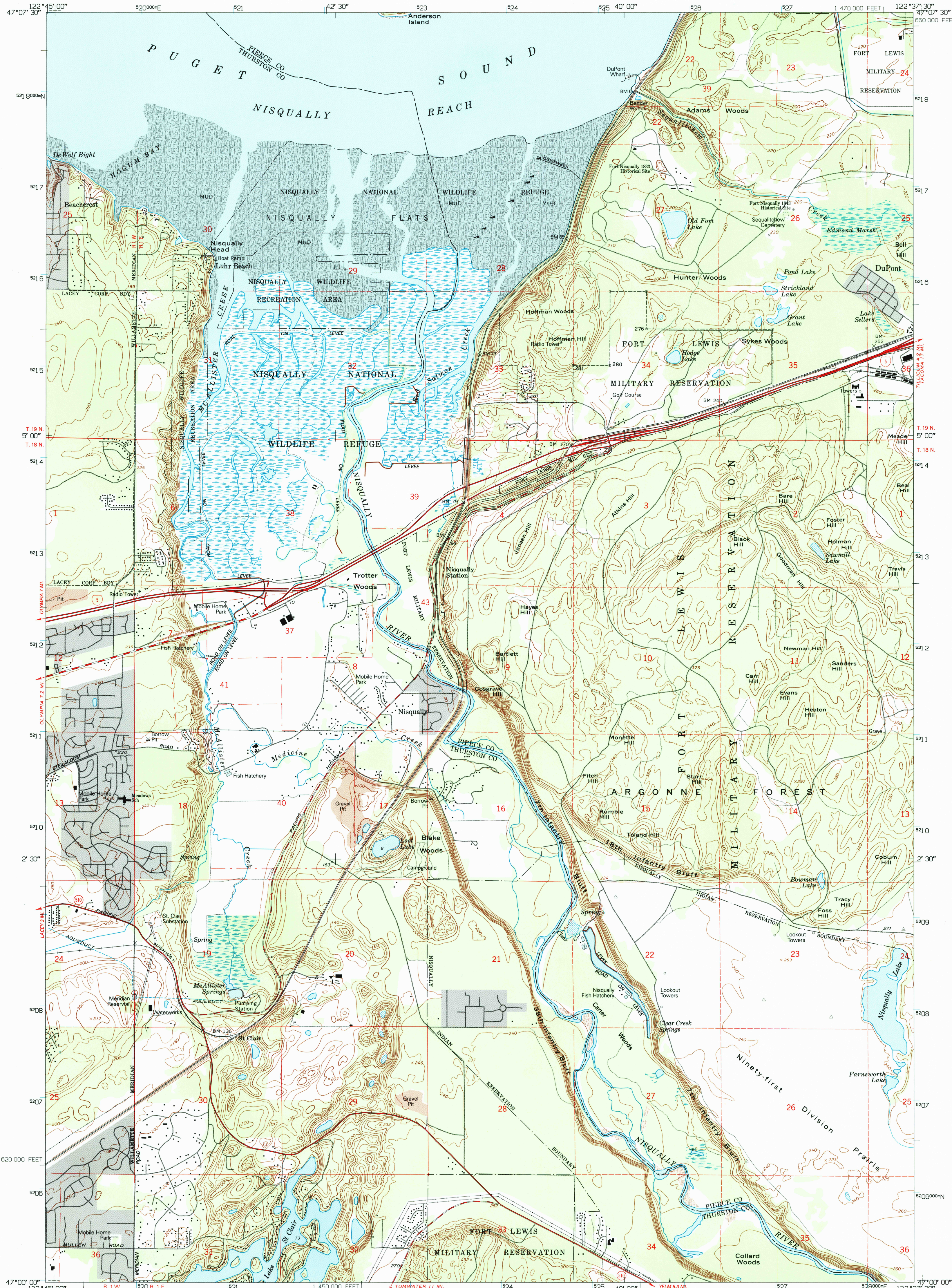


UNITED STATES
DEPARTMENT OF THE INTERIOR
GEOLOGICAL SURVEY

NISQUALLY QUADRANGLE
WASHINGTON
7.5 MINUTE SERIES (TOPOGRAPHIC)



Produced by the United States Geological Survey
Control by USGS, NOS/NOAA and USCE
Compiled from aerial photographs taken 1947. Revised from
aerial photographs taken 1990 and other sources. Field checked
1993. Map edited 1994. Contours and land elevations have
not been revised and may conflict with other content.
North American Datum of 1927 (NAD 27). Projection and
blue 1000-meter ticks: Universal Transverse Mercator, zone 10
10 000-foot ticks: Washington Coordinate System, south zone
North American Datum of 1983 (NAD 83) is shown by dashed
corner ticks. The values of the shift between NAD 27 and
NAD 83 for 7.5-minute intersections are obtainable from
National Geographic Survey NADCON software.
Gray tint indicates areas in which only landmark buildings are
shown.
There may be private inholdings within the boundaries of the
National or State reservations shown on this map.

UTM GRID AND 1994 MAGNETIC NORTH
DECLINATION AT CENTER OF SHEET

SCALE 1:24 000
1 000 0 1000 2000
KILOMETERS
1 000 0 1000 2000
METERS
1 000 0 1000 2000
FEET
CONTOUR INTERVAL 20 FEET
NATIONAL GEODETIC VERTICAL DATUM OF 1929
TO CONVERT FEET TO METERS MULTIPLY BY 0.3048
TO CONVERT METERS TO FEET MULTIPLY BY 3.2808
THIS MAP COMPLIES WITH NATIONAL MAP ACCURACY STANDARDS
FOR SALE BY U.S. GEOLOGICAL SURVEY
DENVER, COLORADO 80225, OR RESTON, VIRGINIA 22092
A FOLDER DESCRIBING TOPOGRAPHIC MAPS AND SYMBOLS IS AVAILABLE ON REQUEST

ROAD CLASSIFICATION
Primary highway
hard surface
Secondary highway
hard surface
Unimproved road
Light-duty road, hard or
improved surface
Unimproved road
Interstate Route
U.S. Route
State Route
QUADRANGLE LOCATION
WASHINGTON
1 2 3
4 5
6 7 8
1 Longbranch
2 McNeil Island
3 Stellacoom
4 Lacey
5 Fort Lewis
6 East Olympia
7 Tenalquot Prairie
8 McKenna
ADJOINING 7.5' QUADRANGLE NAMES
NISQUALLY, WA
47122-A6-TF-024
1959
REVISED 1994
DMA 1478 II SW-SERIES V891

USGS AND HISTORICAL
MAP ARCHIVES
OCT 25 1994
REC'D FILE COPY