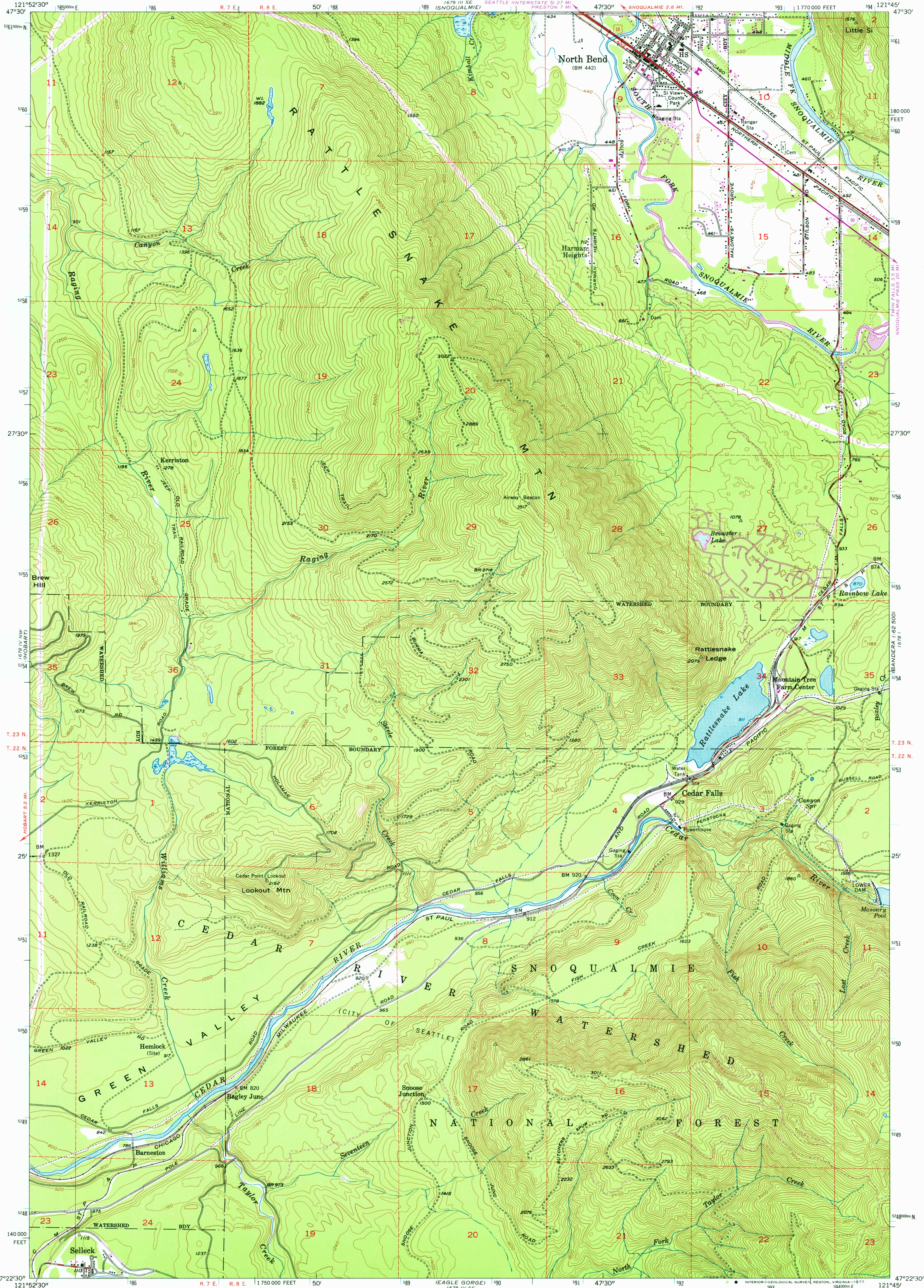


1679 IV SW
(FALL CITY)

UNITED STATES
DEPARTMENT OF THE INTERIOR
GEOLOGICAL SURVEY

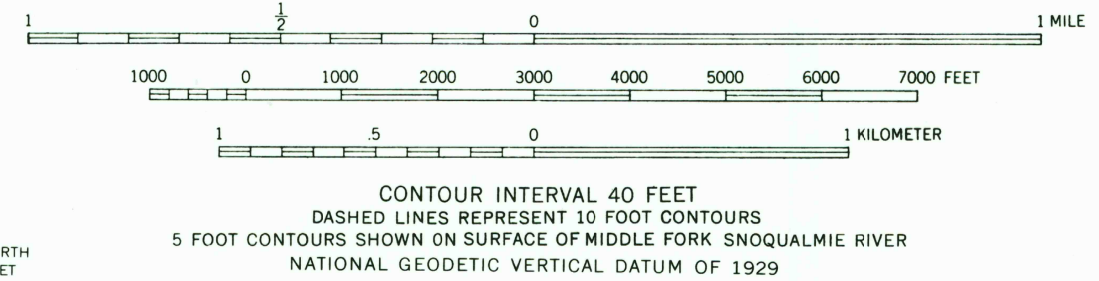
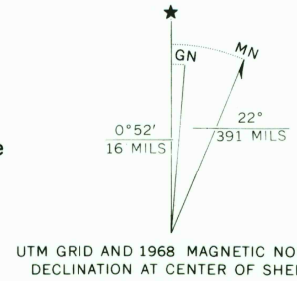
NORTH BEND QUADRANGLE
WASHINGTON—KING CO.
7.5 MINUTE SERIES (TOPOGRAPHIC)

1679 I SE
MOUNTAIN PASS 20 MI



1678 IV SW
(CUMBERLAND)

Maped, edited, and published by the Geological Survey
Control by USGS and USC&GS
Topography from aerial photographs by multiplex methods
Aerial photographs taken 1952. Field check 1953
Polyconic projection. 1927 North American datum
10,000-foot grid based on Washington coordinate system, north zone
Travel within the Cedar River Watershed area is restricted
Dashed land lines indicate approximate locations
Unchecked elevations are shown in brown
1000-meter Universal Transverse Mercator grid ticks,
zone 10, shown in blue
Revisions shown in purple compiled from aerial photographs
taken 1968. This information not field checked



ROAD CLASSIFICATION

Heavy-duty	Light-duty
Medium-duty	Unimproved dirt
U.S. Route	Interstate Route

NORTH BEND, WASH.
N4722.5—W12145/7.5
1953
PHOTOREVISED 1968
AMS 1678 IV NE—SERIES V891

FEB 28 1977

4490