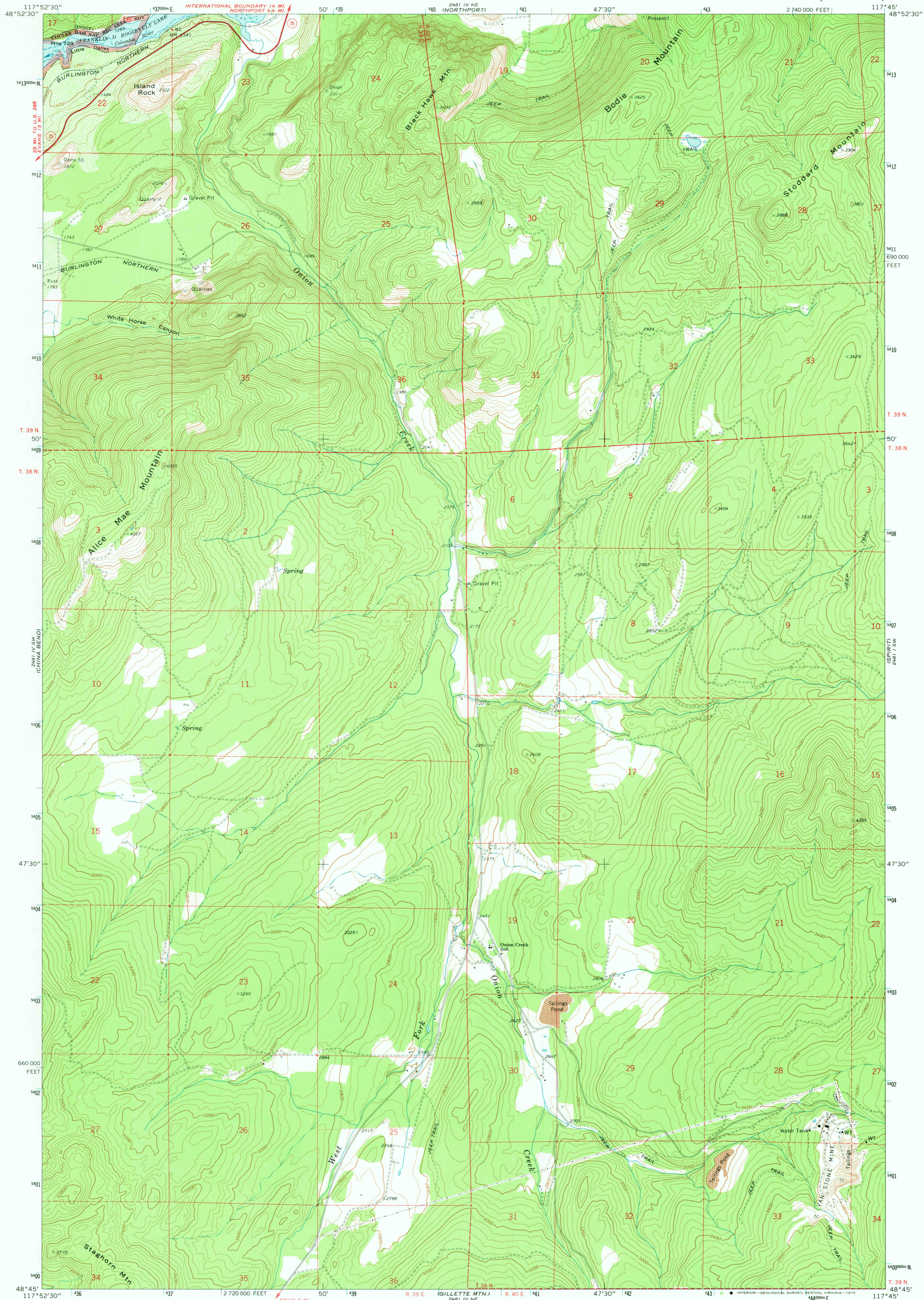


UNITED STATES
DEPARTMENT OF THE INTERIOR
GEOLOGICAL SURVEY

ONION CREEK QUADRANGLE
WASHINGTON—STEVENS CO.
7.5 MINUTE SERIES (TOPOGRAPHIC)



Mapped, edited, and published by the Geological Survey
Control by USGS, USC&GS, and U. S. Bureau of Reclamation
Topography by photogrammetric methods from aerial
photographs taken 1965. Field checked 1969
Selected hydrographic data compiled from USC&GS
Chart 6169 (1968). This information is not intended
for navigational purposes
Polyconic projection. 1927 North American datum
10,000-foot grid based on Washington coordinate system,
north zone
1000-metre Universal Transverse Mercator grid ticks,
zone 11, shown in blue
Fine red dashed lines indicate selected fence lines



SCALE 1:24,000
CONTOUR INTERVAL 40 FEET
NATIONAL GEODETIC VERTICAL DATUM OF 1929
SOUNDINGS IN FEET—DATUM IS NORMAL POOL ELEVATION 1289 FEET



ROAD CLASSIFICATION
Primary highway, all weather, hard surface
Light-duty road, all weather, improved surface
Unimproved road, fair or dry weather
State Route

ONION CREEK, WASH.
N4845—W11745/7.5

USGS
HISTORICAL FILE
TOPOGRAPHIC DIVISION

1969

AMS 2481 IV SE—SERIES V891

SEP 22 1975

6500