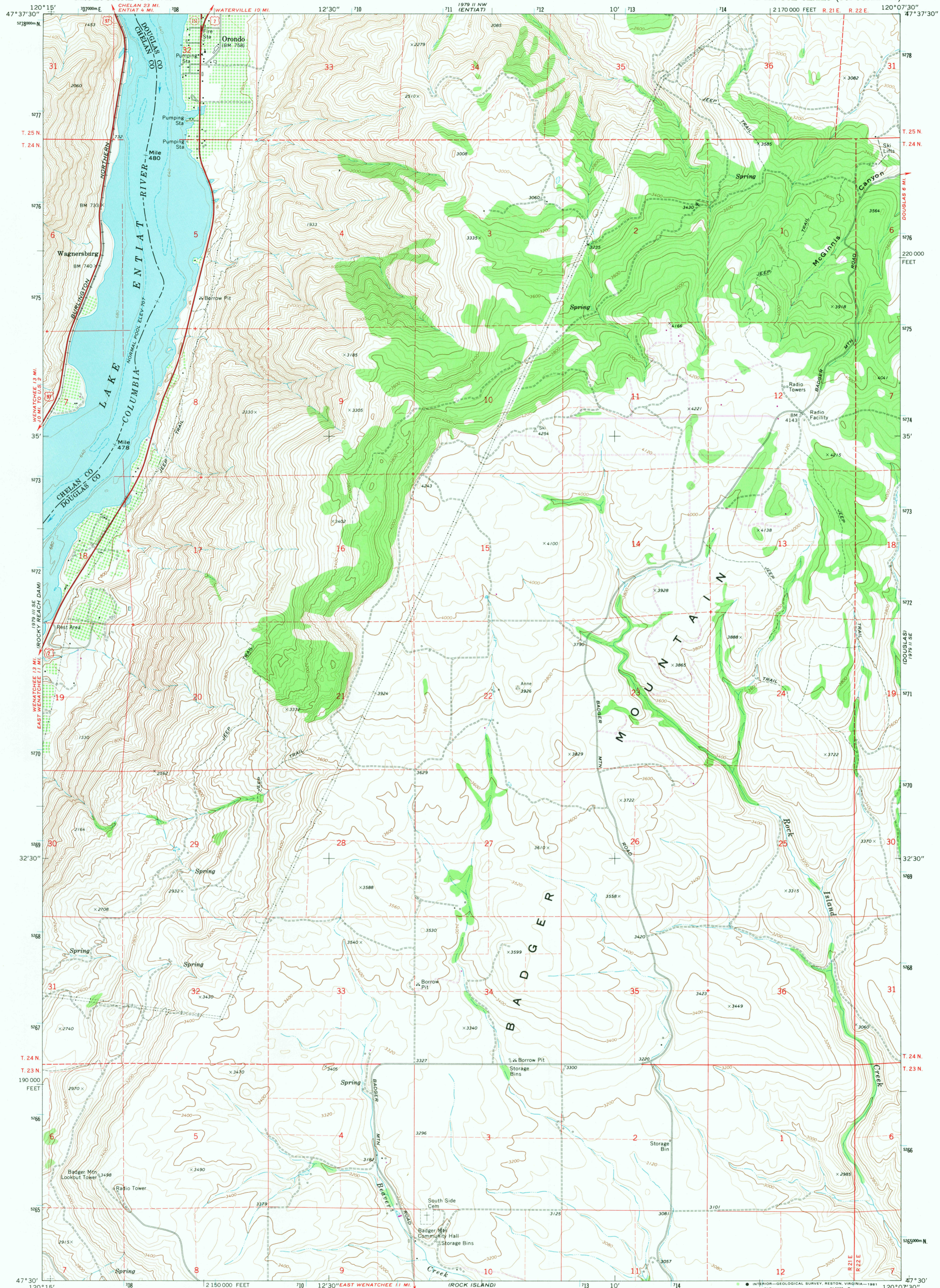


1979 II SE
(WATERVILLE)

UNITED STATES
DEPARTMENT OF THE INTERIOR
GEOLOGICAL SURVEY

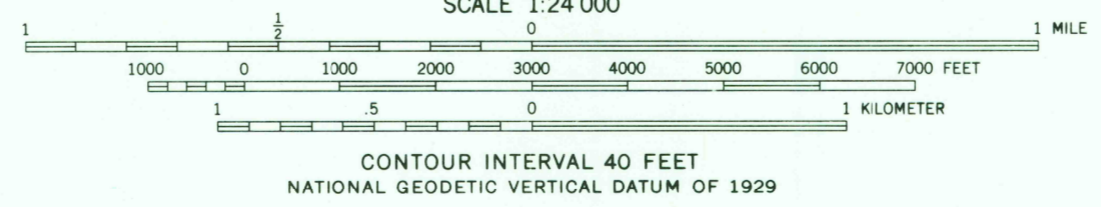
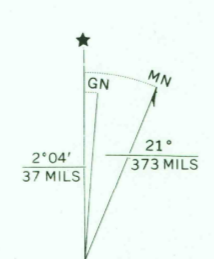
ORONDO QUADRANGLE
WASHINGTON
7.5 MINUTE SERIES (TOPOGRAPHIC)

1979 II NE
(WATERVILLE)



1979 II SE
(WATERVILLE)

Mapped, edited, and published by the Geological Survey
Control by USGS and NOS/NOAA
Topography by photogrammetric methods from aerial
photographs taken 1967. Field checked 1968
Polyconic projection. 1927 North American datum
10,000-foot grid based on Washington coordinate system,
north zone
1000-meter Universal Transverse Mercator grid ticks,
zone 10, shown in blue
To place on the predicted North American Datum 1983,
move the projection lines 20 meters north and
88 meters east as shown by dashed corner ticks
Fine red dashed lines indicate selected fence lines



ROAD CLASSIFICATION
Primary highway, hard surface
Secondary highway, hard surface
Light-duty road, hard or improved surface
Unimproved road
Interstate Route
U. S. Route
State Route

ORONDO, WASH.
N4730—W12007.5/7.5

THIS MAP COMPLIES WITH NATIONAL MAP ACCURACY STANDARDS
FOR SALE BY U. S. GEOLOGICAL SURVEY, DENVER, COLORADO 80225, OR RESTON, VIRGINIA 22092
A FOLDER DESCRIBING TOPOGRAPHIC MAPS AND SYMBOLS IS AVAILABLE ON REQUEST

Revisions shown in purple compiled from aerial photographs
taken 1978 and other source data. This information not
field checked. Map edited 1981

1968
PHOTOREVISED 1981
DMA 1979 II SW—SERIES V891

USES
HISTORICAL FILE
NATIONAL MAPPING DIVISION

SEP 18 1981
2100