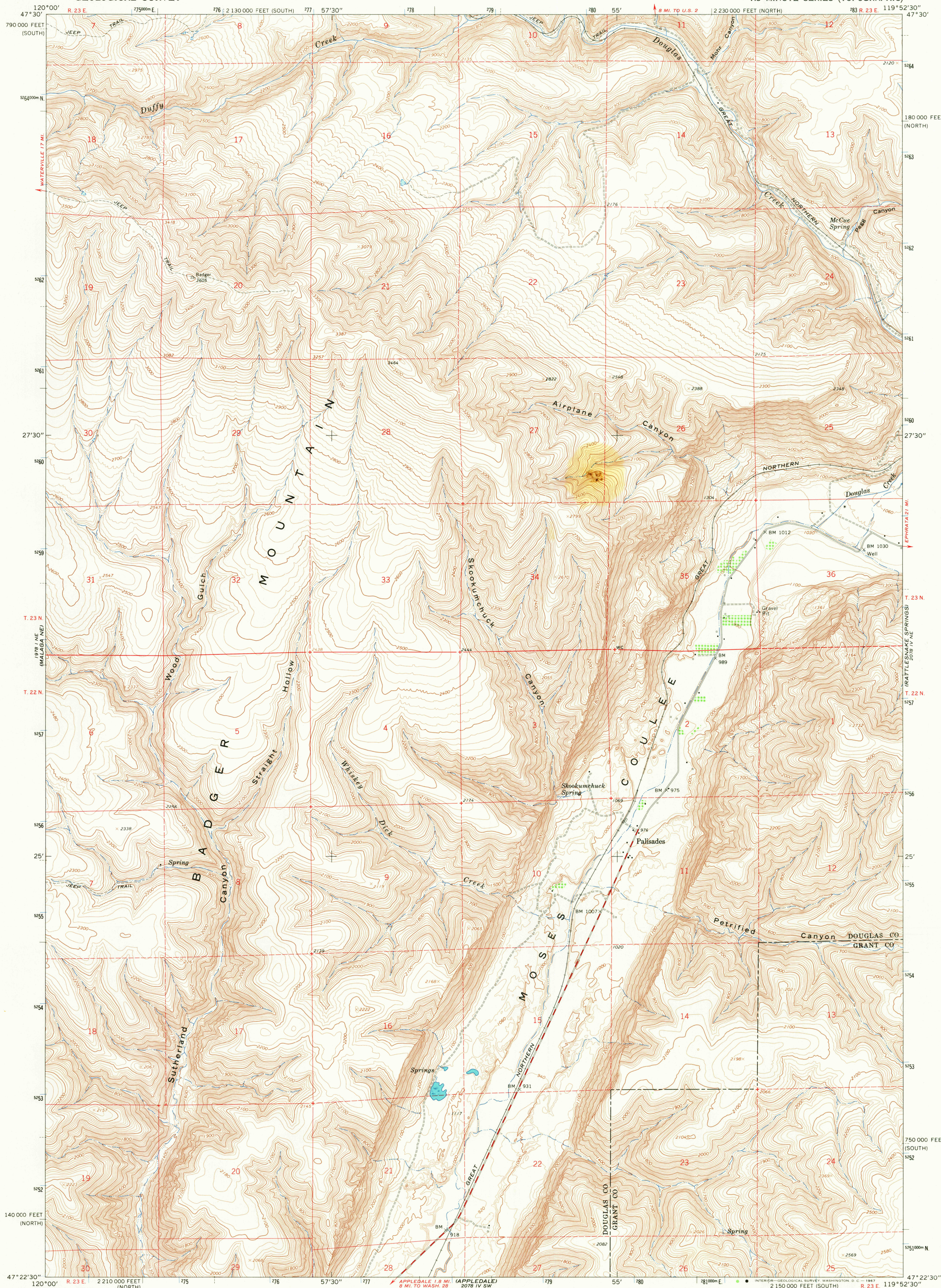


UNITED STATES
DEPARTMENT OF THE INTERIOR
GEOLOGICAL SURVEY

PALISADES QUADRANGLE
WASHINGTON
7.5 MINUTE SERIES (TOPOGRAPHIC)



Mapped, edited, and published by the Geological Survey

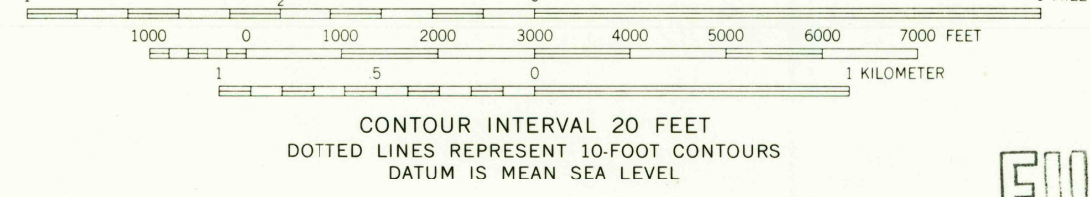
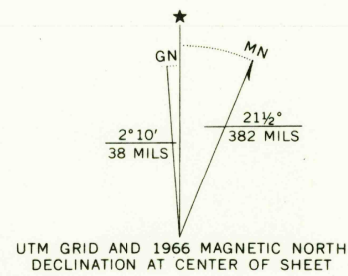
Control by USGS, USC&GS, and USCE

Topography by photogrammetric methods from aerial photographs taken 1964-65. Field checked 1966

Polyconic projection. 1927 North American datum

10,000-foot grids based on Washington coordinate system, north and south zones

1000-meter Universal Transverse Mercator grid ticks, zone 11, shown in blue



U.S.G.S.
TOPOGRAPHIC DIVISION

ROAD CLASSIFICATION
Medium-duty ——— Light-duty ———
Unimproved dirt =====

PALISADES, WASH.
N4722.5—W11952.5/7.5

1966

AMS 2078 IV NW—SERIES V891

THIS MAP COMPLIES WITH NATIONAL MAP ACCURACY STANDARDS
FOR SALE BY U.S. GEOLOGICAL SURVEY, DENVER, COLORADO 80225, OR WASHINGTON, D. C. 20542
A FOLDER DESCRIBING TOPOGRAPHIC MAPS AND SYMBOLS IS AVAILABLE ON REQUEST

2965

APR 1 6 1968

APR 1 6 1968