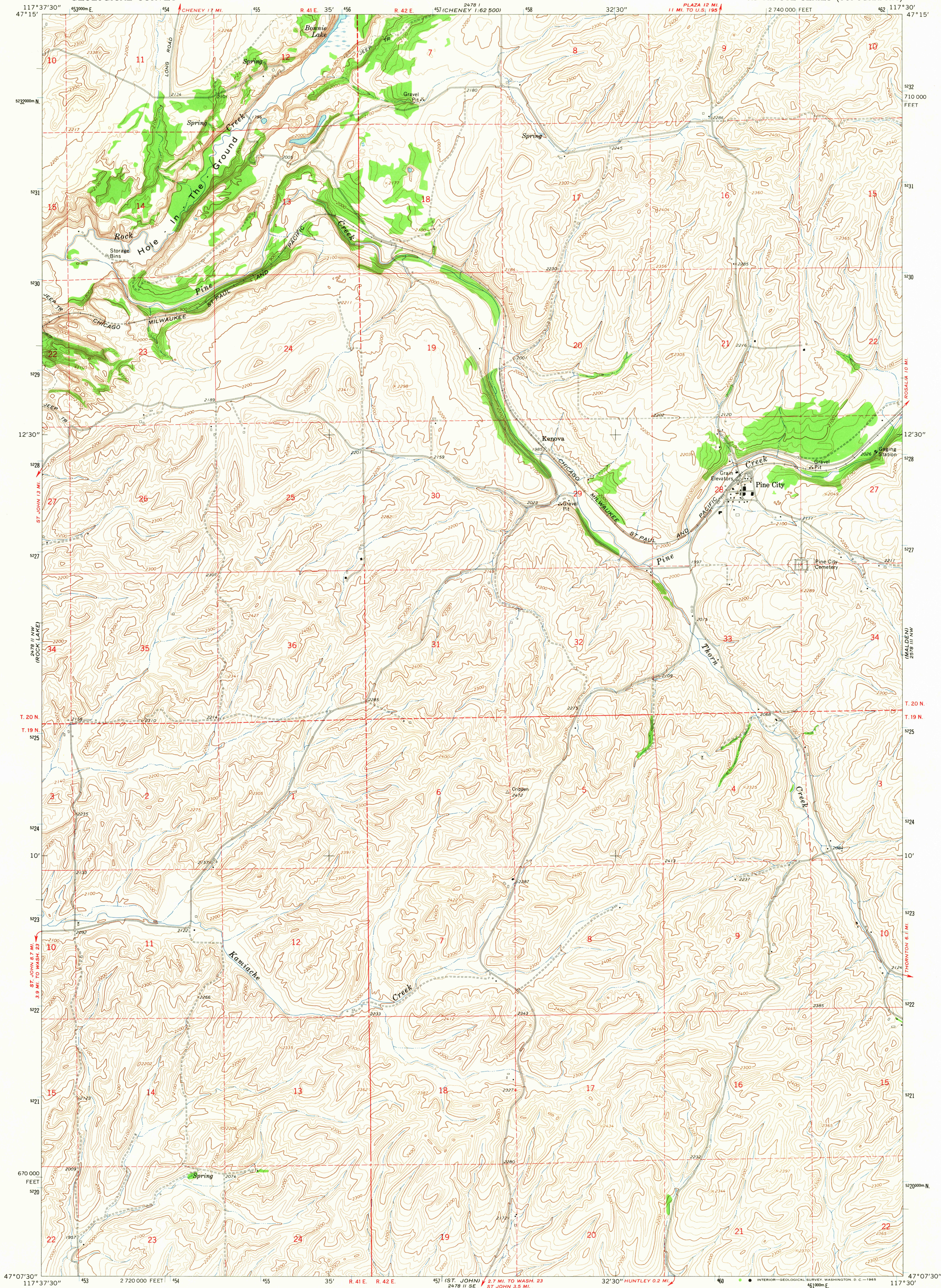


UNITED STATES  
DEPARTMENT OF THE INTERIOR  
GEOLOGICAL SURVEY

PINE CITY QUADRANGLE  
WASHINGTON-WHITMAN CO.  
7.5 MINUTE SERIES (TOPOGRAPHIC)

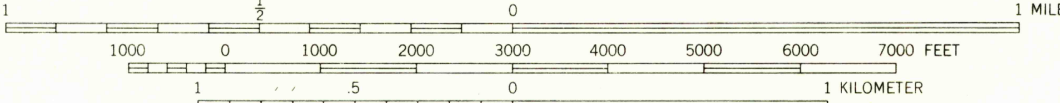
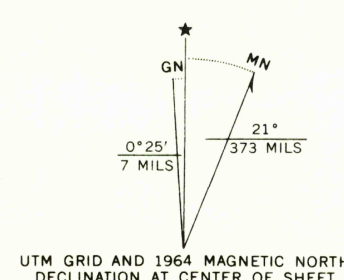


Mapped, edited, and published by the Geological Survey

Control by USGS and USC&GS

Topography by photogrammetric methods from aerial photographs taken 1960. Field checked 1964

Polyconic projection. 1927 North American datum  
10,000-foot grid based on Washington coordinate system,  
south zone  
1000-meter Universal Transverse Mercator grid ticks,  
zone 11, shown in blue



CONTOUR INTERVAL 20 FEET  
DOTTED LINES REPRESENT 10-FOOT CONTOURS  
DATUM IS MEAN SEA LEVEL



ROAD CLASSIFICATION  
Light-duty ————— Unimproved dirt - - - - -

USGS  
Historical File  
Topographic Division

U.S.G.S.  
FILE COPY  
TOPOGRAPHIC DIVISION

PINE CITY, WASH.  
N4707.5-W11730.7.5

1964  
AMS 2478 II NE-SERIES V891

AUG 10 1965

2705