

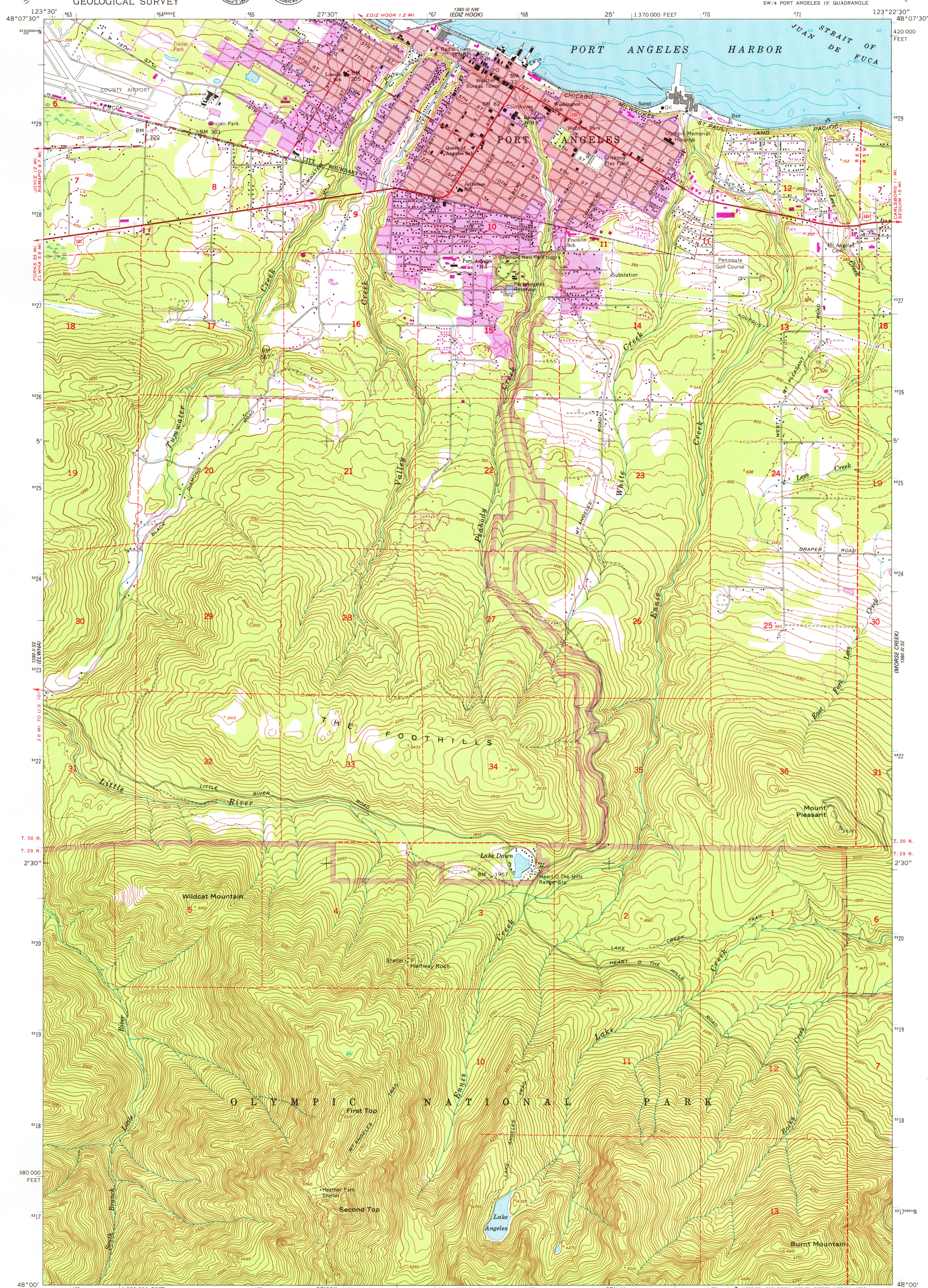
123°30' 48°07'30" N

UNITED STATES
DEPARTMENT OF THE INTERIOR
GEOLOGICAL SURVEY



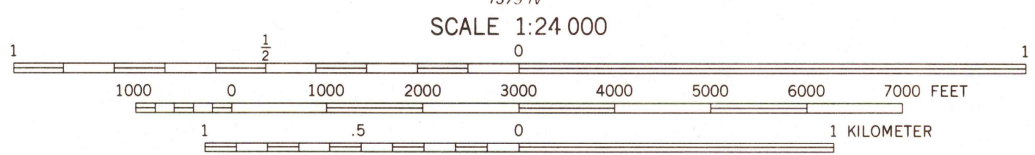
PORT ANGELES QUADRANGLE
WASHINGTON—CLALLAM CO.
7.5 MINUTE SERIES (TOPOGRAPHIC)
SW/4 PORT ANGELES 15' QUADRANGLE

123°22'30" 48°07'30" N



123°30' 48°00' N

Mapped by the Army Map Service
Edited and published by the Geological Survey
Control by USGS, NOS/NOAA, and USCE
Topography by photogrammetric methods from aerial photographs
taken 1943. Field check 1950. Culture revised by USGS from
aerial photographs taken 1956. Field check 1961
Selected hydrographic data compiled from NOS/NOAA
Charts 6303 (1956) and 6382 (1958). This information
is not intended for navigational purposes
Polyconic projection. 1927 North American Datum
10,000-foot grid based on Washington coordinate system, north zone
1000-meter Universal Transverse Mercator grid ticks,
zone 10, shown in blue
To place on the predicted North American Datum 1983
move the projection lines 24 meters north and
96 meters east as shown by dashed corner ticks



CONTOUR INTERVAL 50 FEET
DASHED LINES REPRESENT 25-FOOT CONTOURS
NATIONAL GEODETIC VERTICAL DATUM OF 1929
DEPTH CURVES AND SOUNDINGS IN FEET—DATUM IS MEAN LOWER LOW WATER
SHORELINE SHOWN REPRESENTS THE APPROXIMATE LINE OF MEAN HIGH WATER
THE MEAN RANGE OF TIDE IS APPROXIMATELY 4 FEET

USGS
Historical File
Topographic Division



ROAD CLASSIFICATION
Heavy-duty ——— Light-duty ———
Medium-duty ——— Unimproved dirt ———
U.S. Route ——— State Route ———

PORT ANGELES, WASH.
SW/4 PORT ANGELES 15' QUADRANGLE
N4800—W12322.5/7.5

Revisions shown in purple compiled by the Geological
Survey from aerial photographs taken 1975
This information not field checked. Map edited 1979
1961
PHOTOREVISED 1979
DMA 1380 III SW—SERIES V891

JAN 14 1980
2575