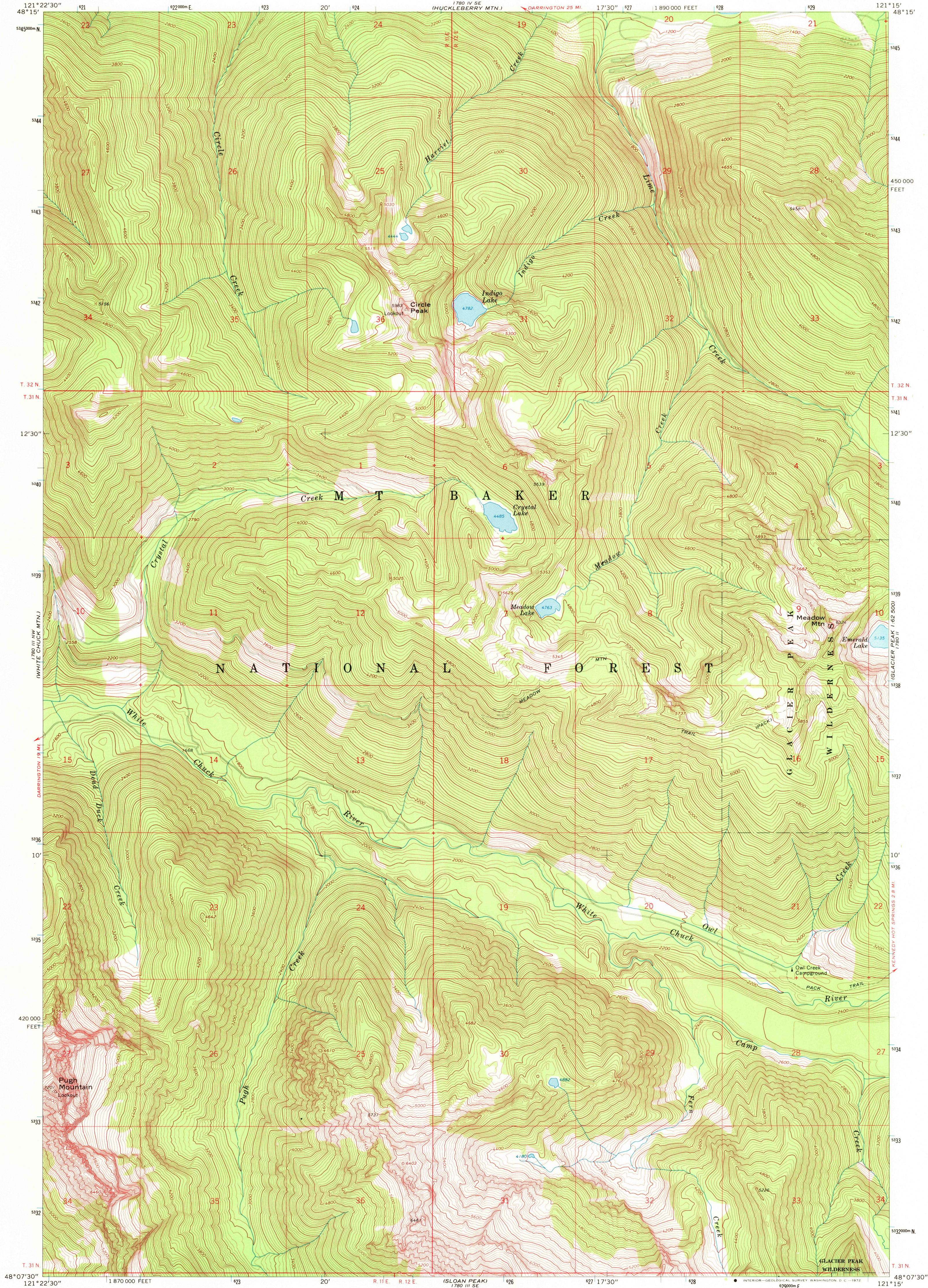
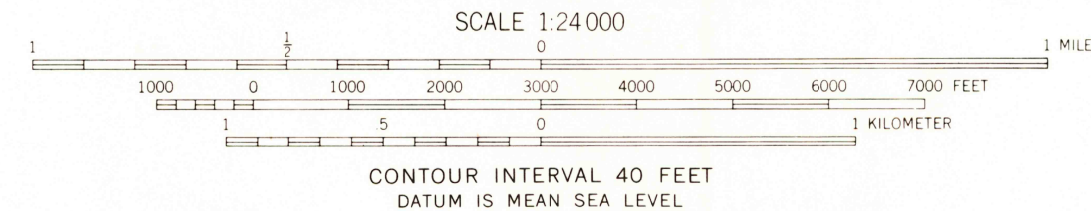
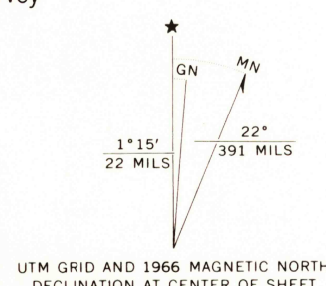


UNITED STATES  
DEPARTMENT OF THE INTERIOR  
GEOLOGICAL SURVEY

PUGH MOUNTAIN QUADRANGLE  
WASHINGTON-SNOHOMISH CO.  
7.5 MINUTE SERIES (TOPOGRAPHIC)



Mapped, edited, and published by the Geological Survey  
Control by USGS and USC&GS  
Topography by photogrammetric methods from aerial  
photographs taken 1963. Field checked 1966.  
Polyconic projection. 1927 North American datum  
10,000-foot grid based on Washington coordinate system,  
north zone  
1000-meter Universal Transverse Mercator grid ticks,  
zone 10, shown in blue



ROAD CLASSIFICATION  
Light-duty ————— Unimproved dirt —————

PUGH MOUNTAIN, WASH.  
N4807.5—W12115.7.5

USGS  
Historical File  
Topographic Division  
1966  
AMS 1780 III NE—SERIES V891

FOR SALE BY U.S. GEOLOGICAL SURVEY, DENVER, COLORADO 80225, OR WASHINGTON, D. C. 20242  
A FOLDER DESCRIBING TOPOGRAPHIC MAPS AND SYMBOLS IS AVAILABLE ON REQUEST

USGS  
HISTORICAL FILE  
TOPOGRAPHIC DIVISION  
SEP 14 1972

5990