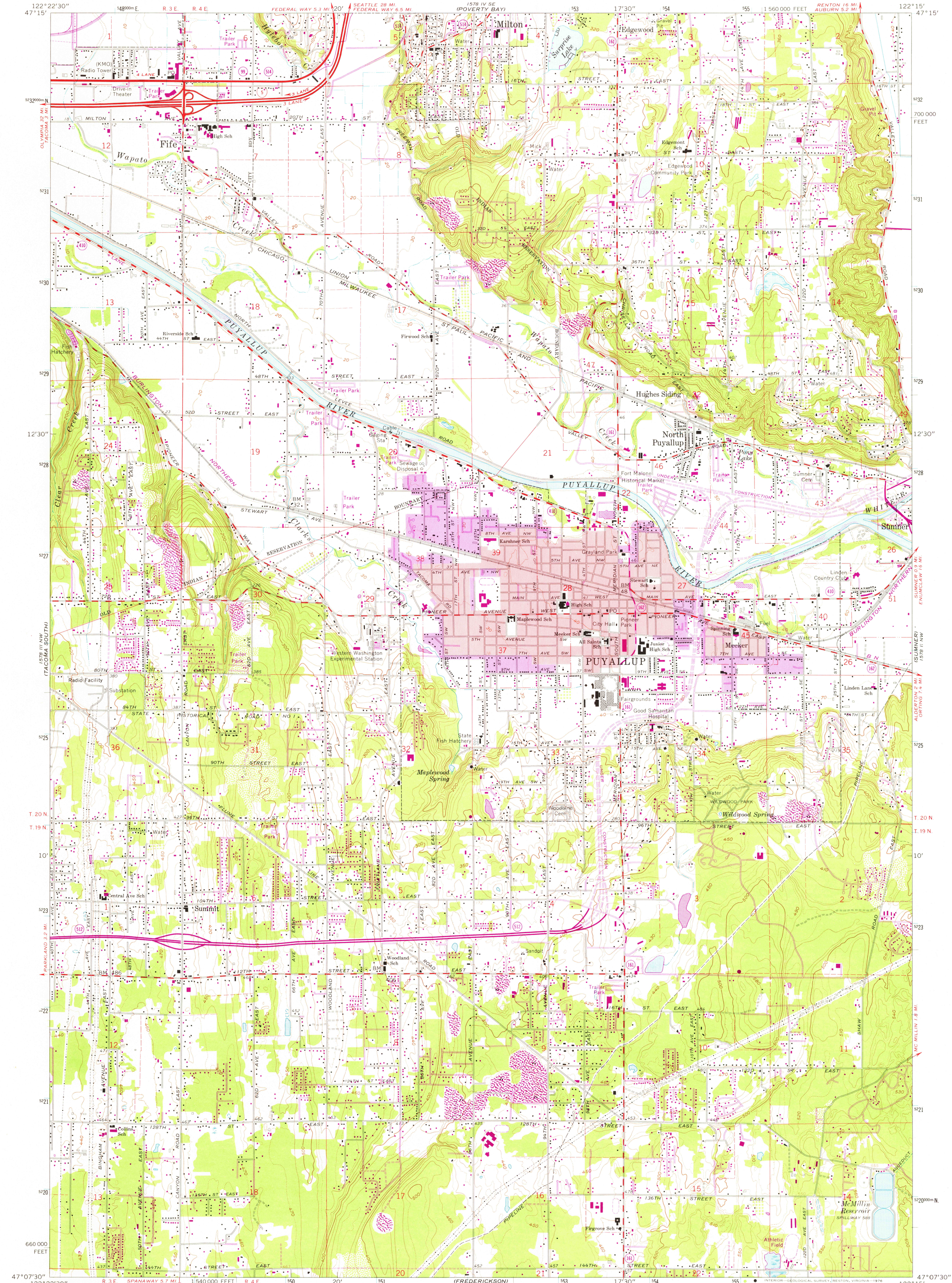


UNITED STATES  
DEPARTMENT OF THE INTERIOR  
GEOLOGICAL SURVEY

PUYALLUP QUADRANGLE  
WASHINGTON—PIERCE CO.  
7.5 MINUTE SERIES (TOPOGRAPHIC)  
NE/4 TACOMA SOUTH 15' QUADRANGLE



Mapped, edited, and published by the Geological Survey  
Control by USGS and USC&GS

Topography by photogrammetric methods from aerial  
photographs taken 1957. Field checked 1961

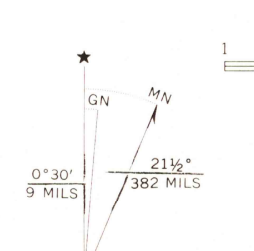
Polyconic projection. 1927 North American datum  
10,000-foot grid based on Washington coordinate system, south zone  
1000-meter Universal Transverse Mercator grid ticks,  
zone 10, shown in blue

Red tint indicates areas in which only landmark buildings are shown  
Dashed land lines indicate approximate locations

Fine red dashed lines indicate selected fence lines

Revisions shown in purple compiled from aerial photographs  
taken 1968 and 1973. This information not field checked

Purple tint indicates extension of urban areas



CONTOUR INTERVAL 20 FEET  
DOTTED LINES REPRESENT 10-FOOT CONTOURS  
NATIONAL GEODETIC VERTICAL DATUM OF 1929

THIS MAP COMPLIES WITH NATIONAL MAP ACCURACY STANDARDS  
FOR SALE BY U.S. GEOLOGICAL SURVEY, DENVER, COLORADO 80225, OR RESTON, VIRGINIA 22092  
A FOLDER DESCRIBING TOPOGRAPHIC MAPS AND SYMBOLS IS AVAILABLE ON REQUEST



ROAD CLASSIFICATION  
Heavy-duty ——— Light-duty ———  
Medium-duty ——— Unimproved dirt ———  
Interstate Route ——— State Route ———

PUYALLUP, WASH.  
NE/4 TACOMA SOUTH 15' QUADRANGLE  
N4707.5—W12215.75

1961  
PHOTOREVISED 1968 AND 1973  
AMS 1578 III NE—SERIES V891

FEB 0 5 1976