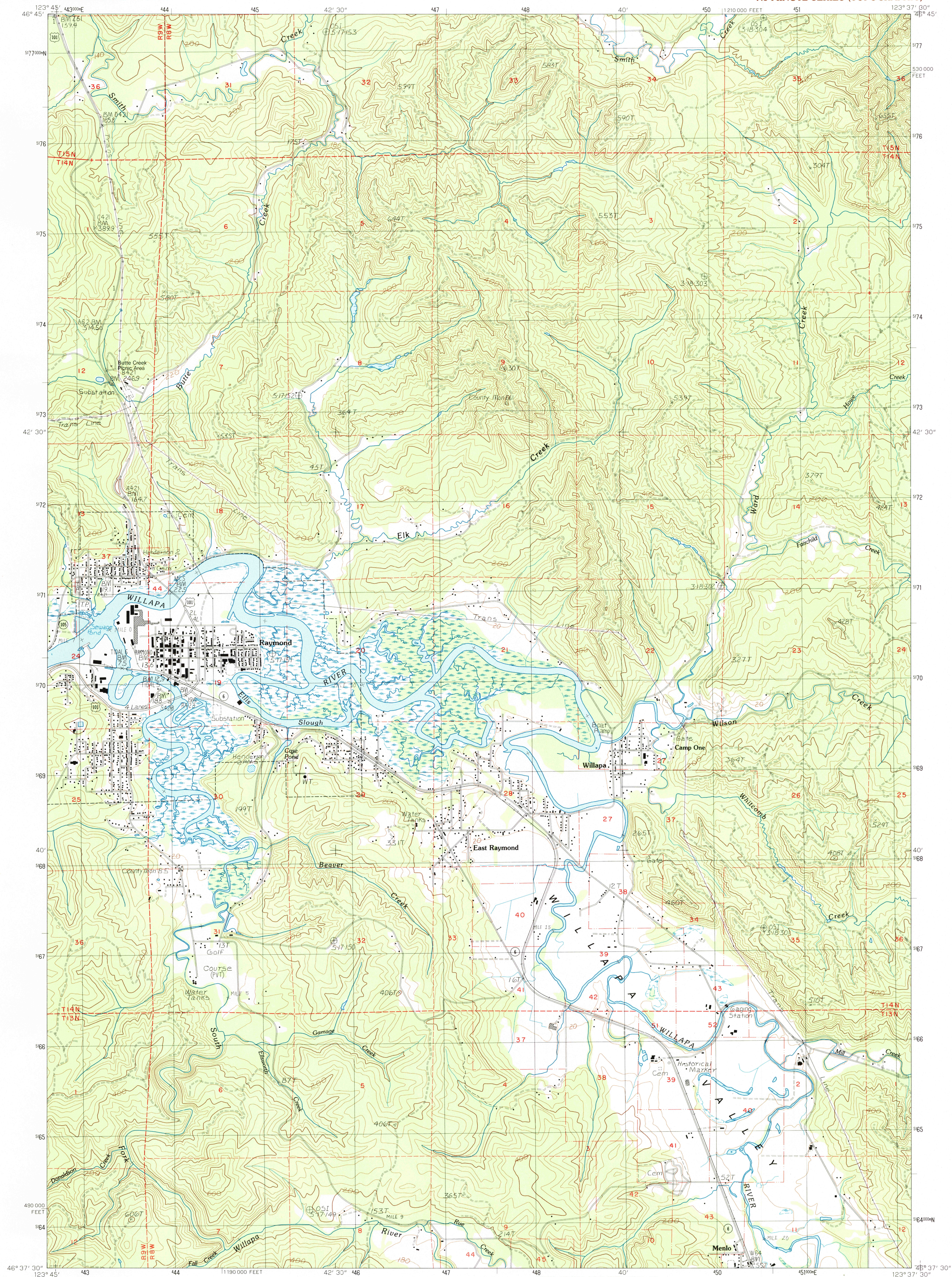


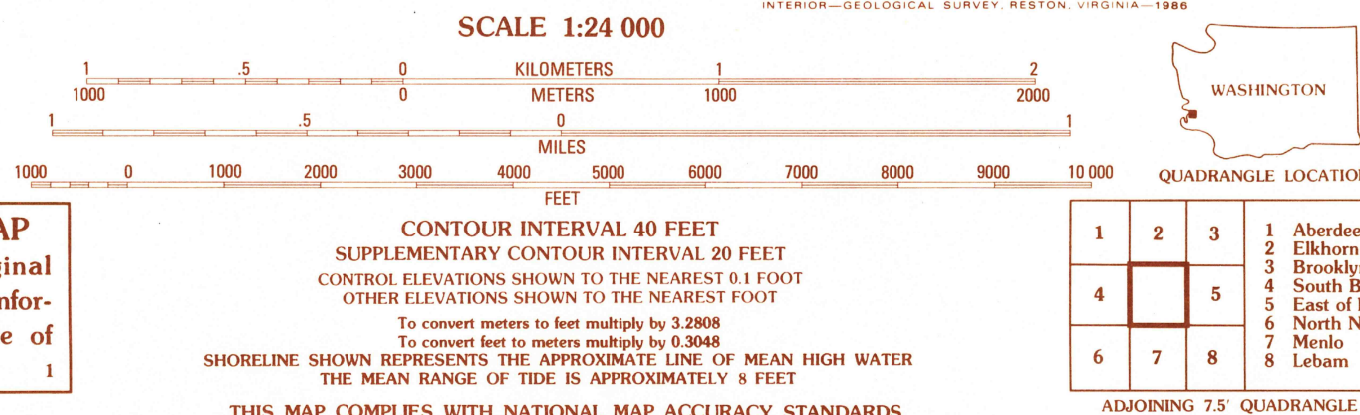
UNITED STATES
DEPARTMENT OF THE INTERIOR
GEOLOGICAL SURVEY

RAYMOND QUADRANGLE
WASHINGTON—PACIFIC CO.
7.5 MINUTE SERIES (TOPOGRAPHIC)

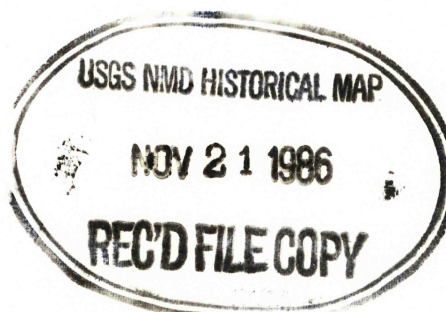


PRODUCED BY THE UNITED STATES GEOLOGICAL SURVEY
CONTROL BY USGS, NOS/NOAA
COMPILED FROM AERIAL PHOTOGRAPHS TAKEN 1981 AND 1983
FIELD CHECKED 1985. MAP EDITED 1986
PROJECTION LAMBERT CONFORMAL CONIC
GRID: 1000-METER UNIVERSAL TRANSVERSE MERCATOR ZONE 10
10,000-FOOT STATE GRID TICKS WASHINGTON, SOUTH ZONE
UTM GRID DECLINATION 0°30' WEST
1980 MAGNETIC NORTH DECLINATION 20°30' EAST
VERTICAL DATUM NATIONAL GEODETIC VERTICAL DATUM OF 1929
HORIZONTAL DATUM 1927 NORTH AMERICAN DATUM
To place on the predicted North American Datum of 1983,
move the projection lines as shown by dashed corner ticks
(24 meters north / 96 meters east)
There may be private inholdings within the boundaries of any
Federal and State Reservations shown on this map
No distinction made between houses, barns, and other buildings

PROVISIONAL MAP
Produced from original
manuscript drawings. Infor-
mation shown as of date of
photography.



ROAD LEGEND
Improved Road
Unimproved Road
Trail
Interstate Route U.S. Route State Route
RAYMOND, WASH.
PROVISIONAL EDITION 1986



THIS MAP COMPLIES WITH NATIONAL MAP ACCURACY STANDARDS
FOR SALE BY U. S. GEOLOGICAL SURVEY, DENVER, COLORADO 80225, OR RESTON, VIRGINIA 22092

46123-F6-TF-024